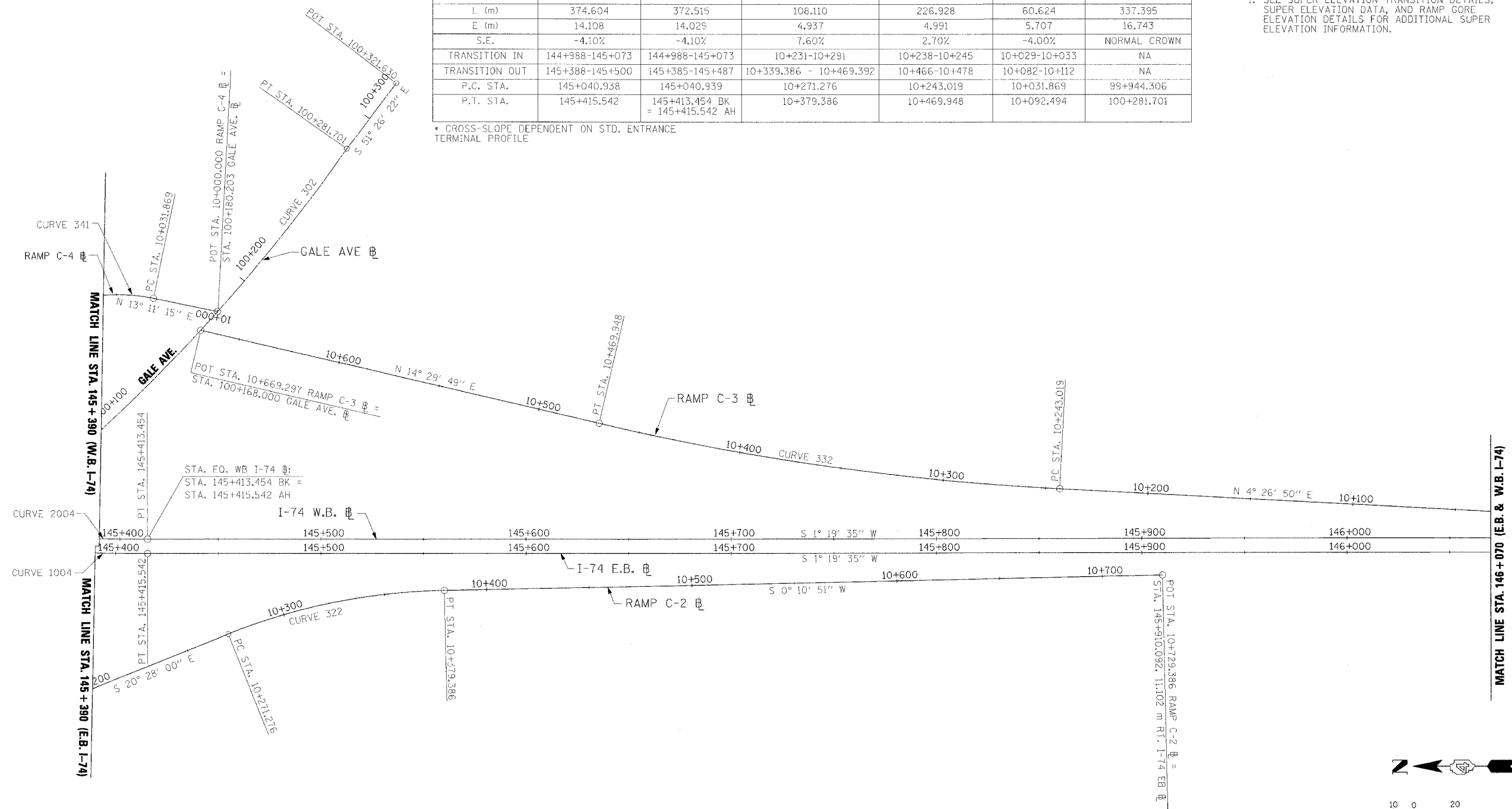


F.A.I. RTE.	SECTION	COUNTY	TOTAL SHEETS	SHEET NO.
74	(72-7)R-3	PEORIA	1360	923
STA.	TO STA.			
FED. ROAD DIST. NO.	ILLINOIS	FED. AID PROJECT		

PROPOSED CURVE DATA						
CURVE NO.	1004	2004	322	332	341	302
ALIGNMENT	E.B. I-74	W.B. I-74	RAMP C-2	RAMP C-3	RAMP C-4	GALE
DESIGN SPEED	110 km/h	110 km/h	80 km/h	80 km/h	50 km/h	55 km/h
P.I. STA.	145+229.644	145+228.592	10+325.923	10+356.775	10+063.535	100+115.183
R (m)	1255.000	1248.000	300.000	1293.773	85.000	863.578
T (m)	188.705	187.653	54.648	113.756	31.666	170.877
L (m)	374.604	372.515	108.110	226.928	60.624	337.395
E (m)	14.108	14.029	4.937	4.991	5.707	16.743
S.E.	-4.10%	-4.10%	7.60%	2.70%	-4.00%	NORMAL CROWN
TRANSITION IN	144+988-145+073	144+988-145+073	10+231-10+291	10+238-10+245	10+029-10+033	NA
TRANSITION OUT	145+388-145+500	145+385-145+487	10+339.386 - 10+469.392	10+466-10+478	10+082-10+112	NA
P.C. STA.	145+040.938	145+040.939	10+271.276	10+243.019	10+031.869	99+944.306
P.T. STA.	145+415.542	145+413.454 BK = 145+415.542 AH	10+379.386	10+469.948	10+092.494	100+281.701

* CROSS-SLOPE DEPENDENT ON STD. ENTRANCE TERMINAL PROFILE

NOTE:
1. SEE SUPER ELEVATION TRANSITION DETAILS, SUPER ELEVATION DATA, AND RAMP GORE ELEVATION DETAILS FOR ADDITIONAL SUPER ELEVATION INFORMATION.



REVISIONS		ILLINOIS DEPARTMENT OF TRANSPORTATION SCHEMATIC DRAWING FAI ROUTE 74 (I-74) WB STA. 145+390 - 146+070
NAME	DATE	
		SCALE 1:1000 DATE 11/23/04
		DRAWN BY MAK/IBT CHECKED BY SDK

 CLARK ENGINEERS, INC.
 CHRISTOPHER B. BURKE
ENGINEERING, LTD.

I:\Projects\2004\74\74-03-23.dwg 12/12/04 09:23:24 AM