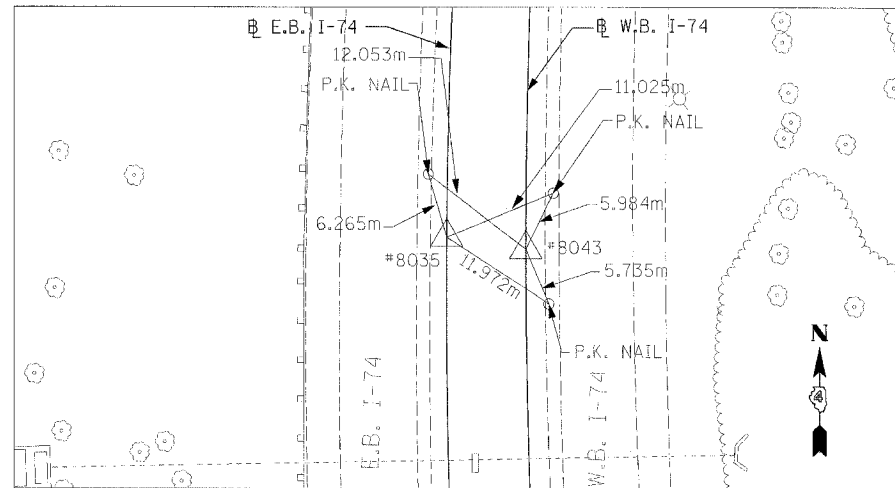
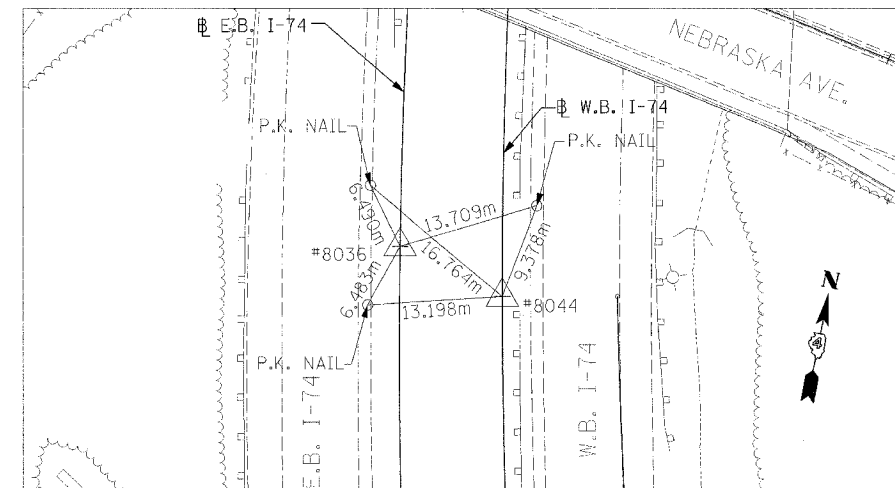


F.A.I. RTE.	SECTION	COUNTY	TOTAL SHEETS	SHEET NO.
74	(72-7)R-3	PEORIA	1360	920
STA.	TO STA.			
FED. ROAD DIST. NO.	ILLINOIS FED. AID PROJECT			

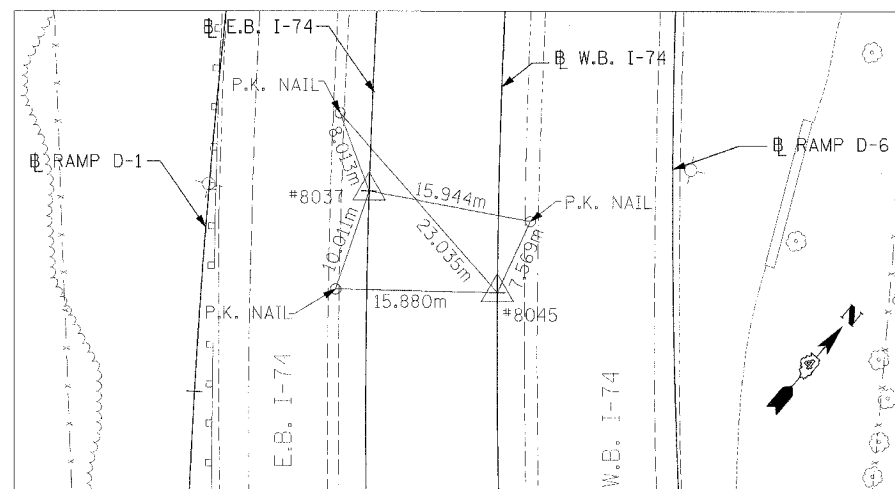
* 172-7,8R



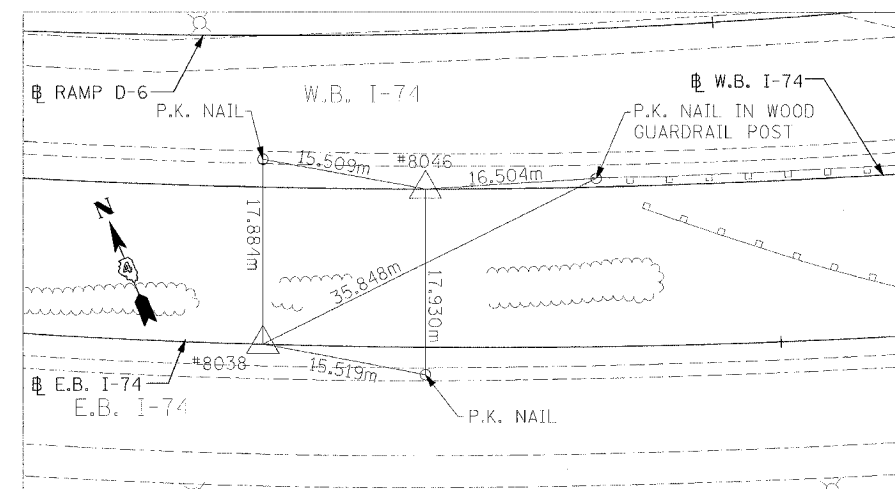
REFERENCE POINTS - 8035 & 8043



REFERENCE POINTS - 8036 & 8044



REFERENCE POINTS - 8037 & 8045



REFERENCE POINTS - 8038 & 8046

POINT #	STATION	DESCRIPTION	COORDINATES	
			NORTHING	EASTING
IAS8035	EB 146+199.612	I.R. SET	449,256.8297	746,054.3672
IAS8036	EB 146+499.595	I.R. SET	448,975.7834	746,152.8032
IAS8037	EB 146+799.577	I.R. SET	448,759.2286	746,357.2063
IAS8038	EB 147+099.559	I.R. SET	448,644.7444	746,632.1061
IAS8043	WB 146+199.611	I.R. SET	449,256.7112	746,062.0783
IAS8044	WB 146+499.593	I.R. SET	448,976.8962	746,163.7341
IAS8045	WB 146+799.576	I.R. SET	448,764.3095	746,372.1501
IAS8046	WB 147+099.559	I.R. SET	448,657.1303	746,649.8964

REVISIONS		ILLINOIS DEPARTMENT OF TRANSPORTATION
NAME	DATE	
		<p>REFERENCE TIES & BENCHMARKS FAI ROUTE 74 (I-74)</p> <p>DRAWN BY SLF CHECKED BY IBT</p>



DATE 11/23/04