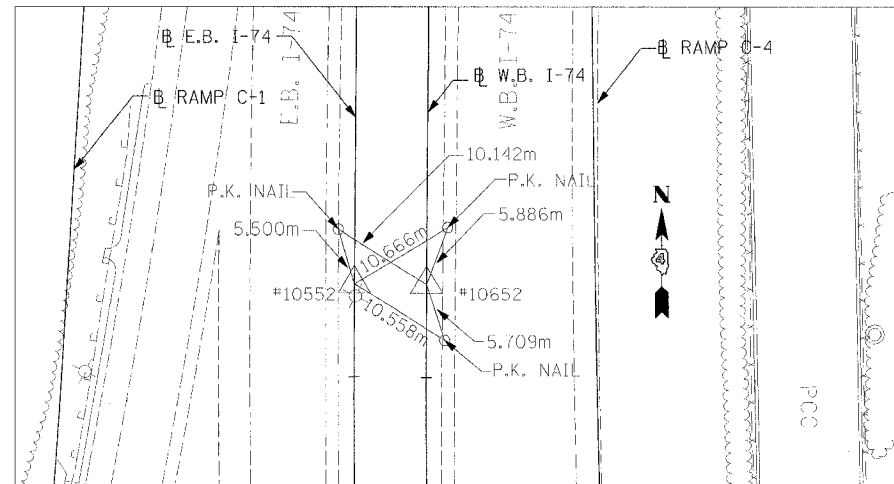
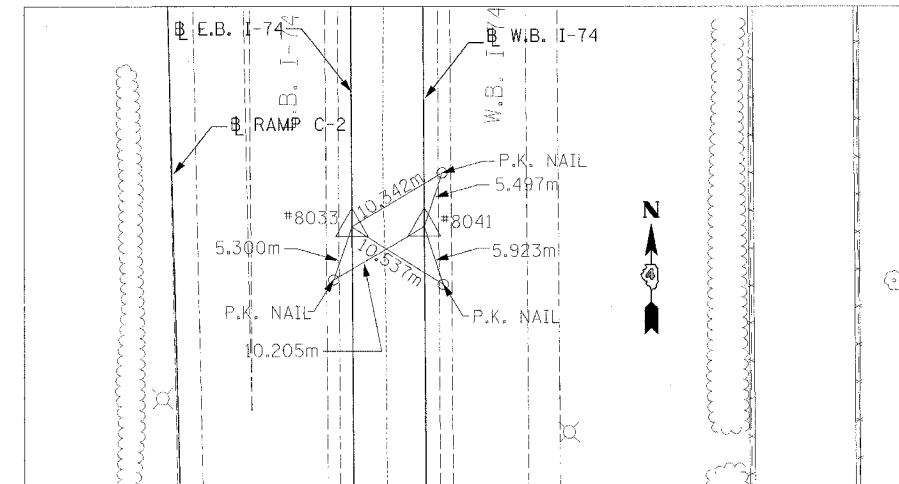


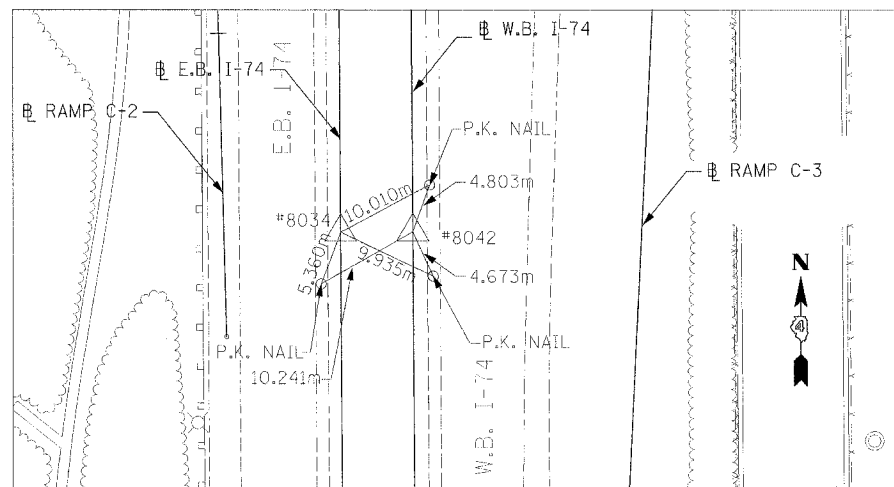
F.A.I. RTE.	SECTION	COUNTY	TOTAL SHEETS	SHEET NO.
74	(72-7R-3)	PEORIA	1360	919
STA.	TO STA.			
FED. ROAD DIST. NO.	ILLINOIS	FED. AID PROJECT		
• (72-7,8R)				



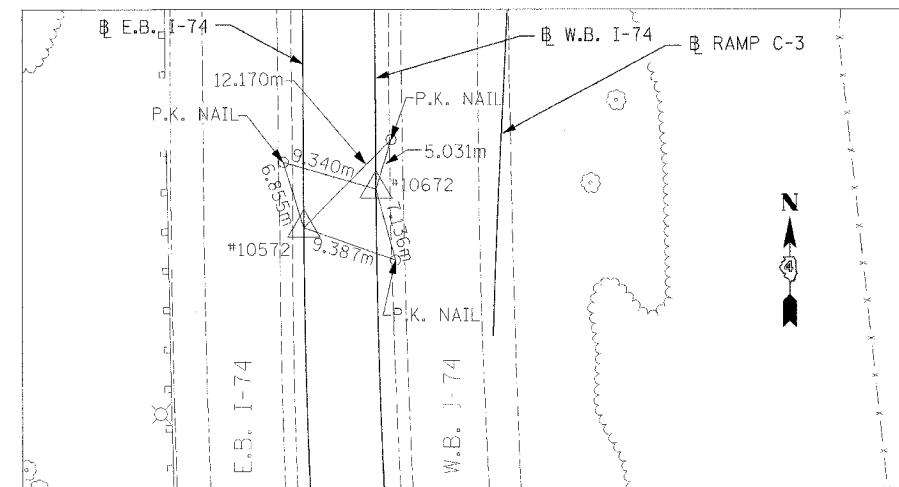
REFERENCE POINTS - 10552 & 10652



REFERENCE POINTS - 8033 & 8041



REFERENCE POINTS - 8034 & 8042



REFERENCE POINTS - 10572 & 10672

POINT #	STATION	DESCRIPTION	COORDINATES	
			NORTHING	EASTING
IAS8033	EB 145+599.647	I.R. SET	449,856.4169	746,060.1980
IAS8034	EB 145+899.630	I.R. SET	449,556.5148	746,053.2534
IAS8041	WB 145+599.645	I.R. SET	449,856.2562	746,067.1965
IAS8042	WB 145+899.628	I.R. SET	449,556.3541	746,060.2518
10552	EB 145+040.938	I.R. SET, PC	450,408.1552	746,128.4825
10572	EB 146+092.223	I.R. SET, PC	449,363.9731	746,048.7942
10652	WB 145+040.939	I.R. SET, PC	450,405.9423	746,135.1231
10672	WB 146+088.537	I.R. SET, PC	449,367.4949	746,055.8777

REVISIONS		ILLINOIS DEPARTMENT OF TRANSPORTATION
NAME	DATE	
		<p>REFERENCE TIES & BENCHMARKS FAI ROUTE 74 (I-74)</p> <p>DRAWN BY SLF CHECKED BY IBT</p> <p>DATE 11/23/04</p>



I:\Projects\74\74R-3\74R-3.dwg 12/14/04 10:30:46 AM