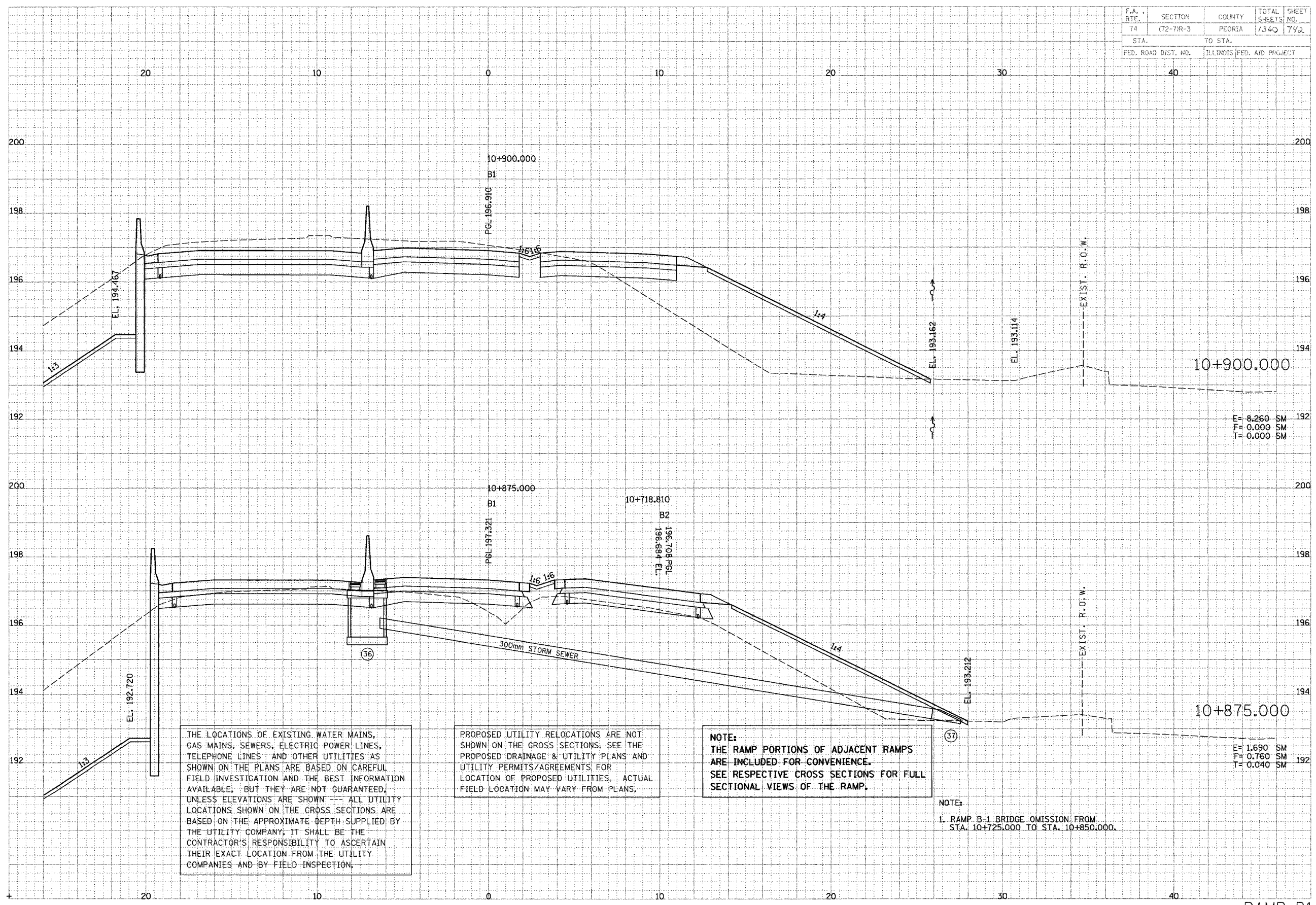


F.A. RITE.	SECTION	COUNTY	TOTAL SHEETS	SHEET NO.
74	(72-7R-3)	PEORIA	1340	742
STA.		TO STA.		
FED. ROAD DIST. NO.		ILLINOIS FED. AID PROJECT		

FINAL	DATE
SUPPLIER	BY
NOTE	DATE
AREA	DATE
DATE	DATE

PARSONS
TRANSCORPORATION DESIGN
Engineers and Planners

ORIGINAL	DATE
SUPPLIER	BY
NOTE	DATE
AREA	DATE
DATE	DATE



THE LOCATIONS OF EXISTING WATER MAINS, GAS MAINS, SEWERS, ELECTRIC POWER LINES, TELEPHONE LINES AND OTHER UTILITIES AS SHOWN ON THE PLANS ARE BASED ON CAREFUL FIELD INVESTIGATION AND THE BEST INFORMATION AVAILABLE, BUT THEY ARE NOT GUARANTEED, UNLESS ELEVATIONS ARE SHOWN --- ALL UTILITY LOCATIONS SHOWN ON THE CROSS SECTIONS ARE BASED ON THE APPROXIMATE DEPTH SUPPLIED BY THE UTILITY COMPANY, IT SHALL BE THE CONTRACTOR'S RESPONSIBILITY TO ASCERTAIN THEIR EXACT LOCATION FROM THE UTILITY COMPANIES AND BY FIELD INSPECTION.

PROPOSED UTILITY RELOCATIONS ARE NOT SHOWN ON THE CROSS SECTIONS. SEE THE PROPOSED DRAINAGE & UTILITY PLANS AND UTILITY PERMITS/AGREEMENTS FOR LOCATION OF PROPOSED UTILITIES, ACTUAL FIELD LOCATION MAY VARY FROM PLANS.

NOTE:
THE RAMP PORTIONS OF ADJACENT RAMP ARE INCLUDED FOR CONVENIENCE. SEE RESPECTIVE CROSS SECTIONS FOR FULL SECTIONAL VIEWS OF THE RAMP.

NOTE:
1. RAMP B-1 BRIDGE OMISSION FROM STA. 10+725.000 TO STA. 10+850.000.