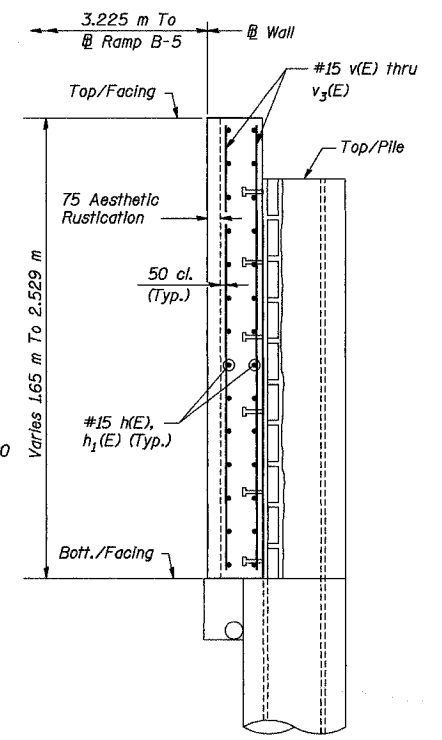
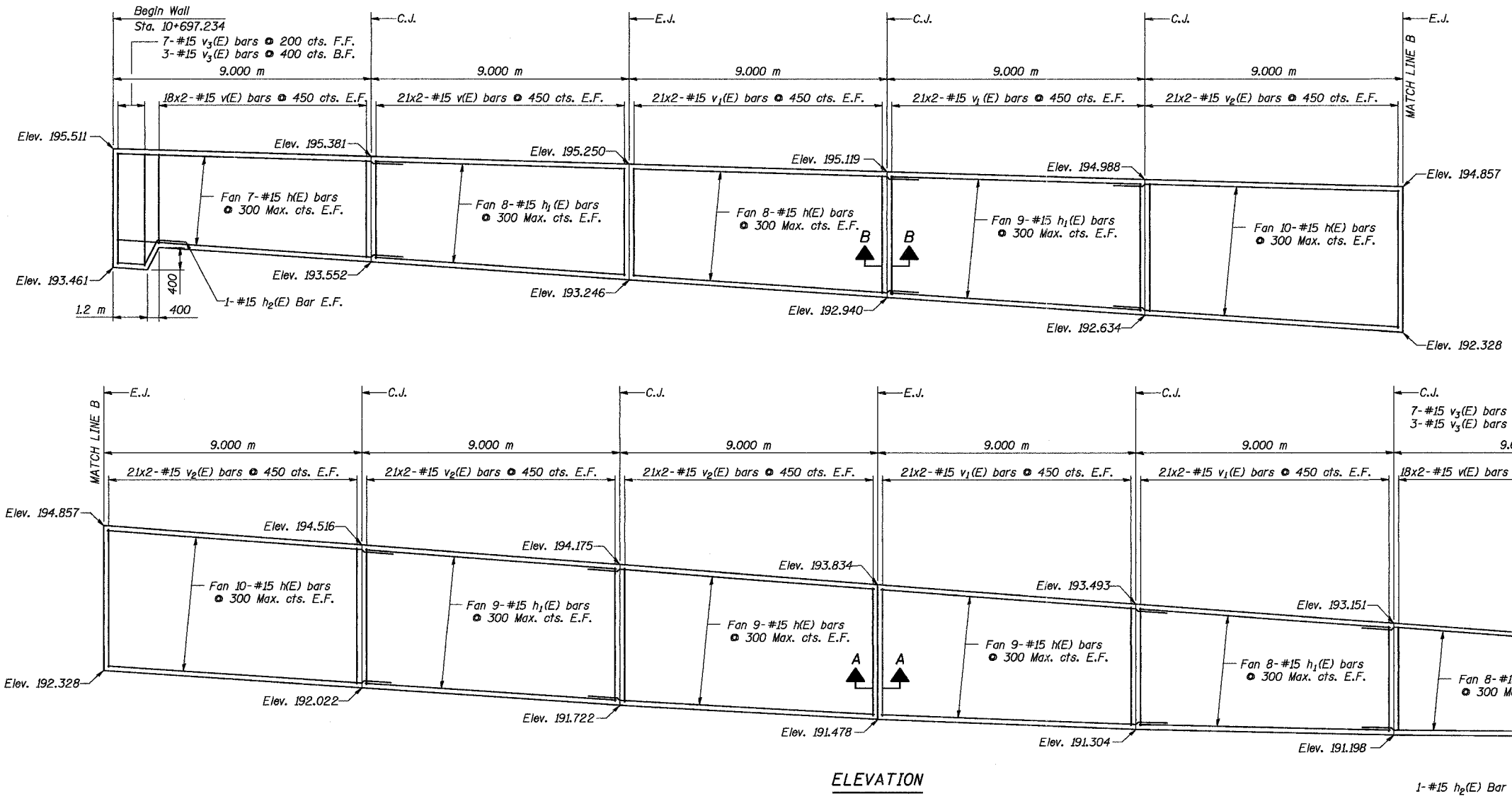
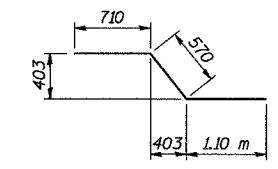


ROUTE NO.	SECT.	COUNTY	SHEET NO.	TOTAL SHEETS
F.A.I. 74	(72-7) R-3	PEORIA	611	1360
FED. ROAD DIST. NO. 7	ILLINOIS	FED. AID PROJECT		

CONTRACT NO. 68200



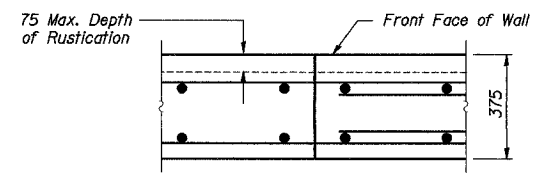
SECTION THRU WALL



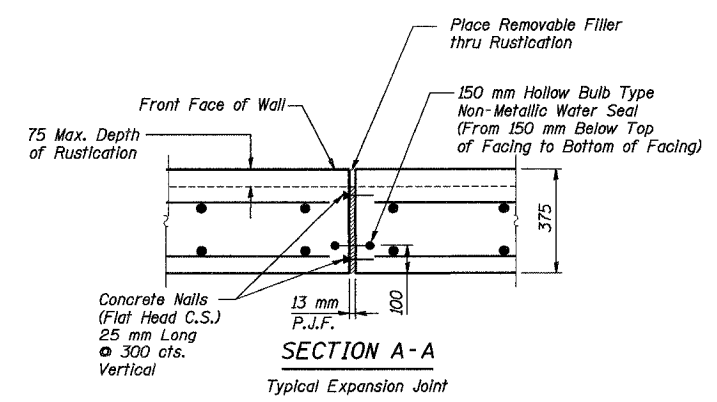
BAR h<sub>2</sub>(E)

**BILL OF MATERIAL**

Bar	No.	Size	Length (m)	Shape
h(E)	122	#15	9.71	—
h <sub>1</sub> (E)	68	#15	8.90	—
h <sub>2</sub> (E)	4	#15	2.38	—
v(E)	228	#15	1.15	—
v <sub>1</sub> (E)	336	#15	1.33	—
v <sub>2</sub> (E)	336	#15	1.41	—
v <sub>3</sub> (E)	20	#15	1.95	—
Reinforcement Bars, Epoxy Coated		kg	4750	
Concrete Structures		m <sup>3</sup>	82.1	



SECTION B-B  
Typical Construction Joint



SECTION A-A  
Typical Expansion Joint

**Notes:**

All dimensions are in millimeters (mm) except as noted.  
Reinforcement bars designated (E) shall be epoxy coated.  
Bars indicated thus 20 x 3-#15 etc. indicates 20 lines of bars with 3 lengths per line.

REVISION	DATE	DESCRIPTION
STATE OF ILLINOIS DEPARTMENT OF TRANSPORTATION		
C.I.P. CONCRETE FACING		
WALL NO. 9 - RAMP B-5 F.A.I. ROUTE 74 SECTION (72-7)R-3 PEORIA COUNTY STATION 10+697.234 TO 10+800.000 (RAMP B-5) STRUCTURE NUMBER 072-8558		
PARSONS TRANSPORTATION GROUP CHICAGO, ILLINOIS		
DRAWING NO. 4	SCALE N.T.S.	DATE 6/25/04
		SHEET NO. 4

**MIN. BAR LAPS**  
#15 (Horiz.) 710  
#15 (Vert.) 390

E.F. Each Face  
F.F. Front Face  
B.F. Back Face  
E.J. Expansion Joint  
C.J. Construction Joint

Date: 11/22/2004 Time: 12:07:07 PM File name: P:\649996\str\luctur\072-8558-Wall #9\sheet\Tracings\RE0001-1A072-8558.dgn

Designed by: WEE/EI  
Checked by: AK  
Drafted by: rp  
Checked by: AK