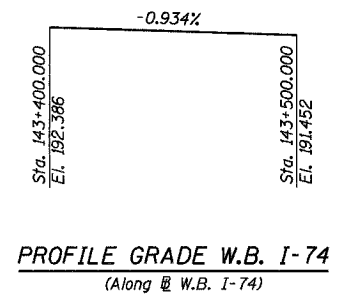
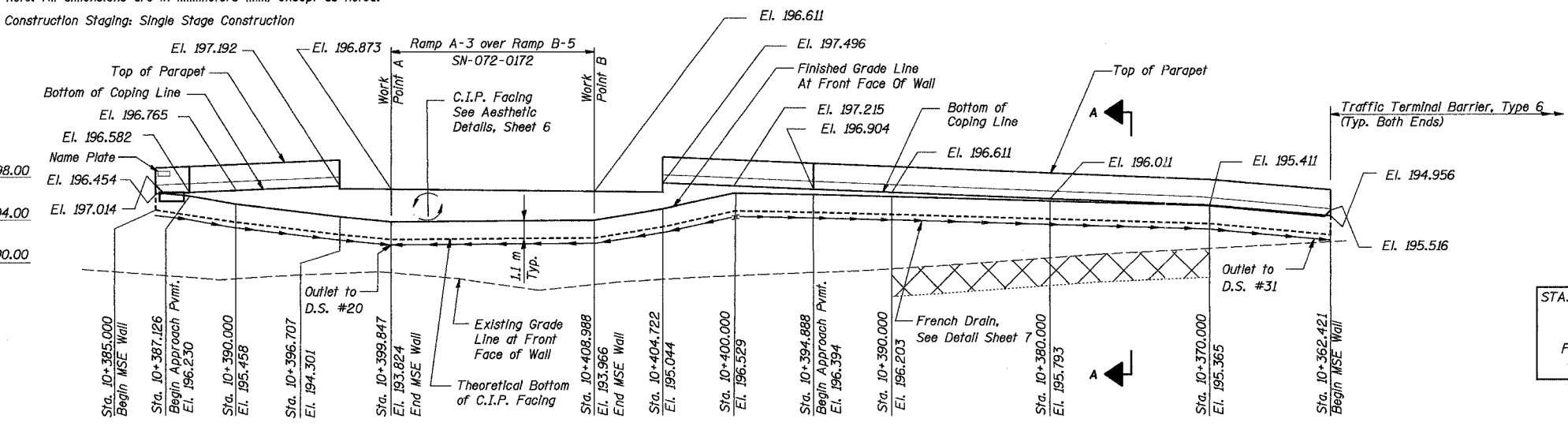


ROUTE NO.	SECT.	COUNTY	SHEET NO.	TOTAL SHEETS
F.A.I. 74	(72-7) R-3	PEORIA	599	1360
FED. ROAD DIST. NO. 7		ILLINOIS	FED. AID PROJECT	

CONTRACT NO. 68200

B. M. #49 : Southwest base bolt on aluminum light pole, north side of WB lanes, I-74 and 30 m west of bridge, War Memorial Drive spur over I-74, El. 190.771 m
 B. M. #3001 : Chiseled "□" on concrete sign base (I-74 - Bloomington/Galesburg) on west side of War Memorial Drive spur, El. 198.767 m
 Note: All dimensions are in millimeters (mm) except as noted.
 Construction Staging: Single Stage Construction



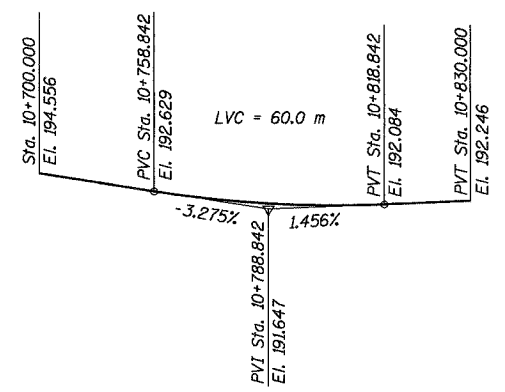
NAME PLATE
See Std. 515001

DESIGN SPECIFICATIONS
2002 AASHTO Standard Specifications

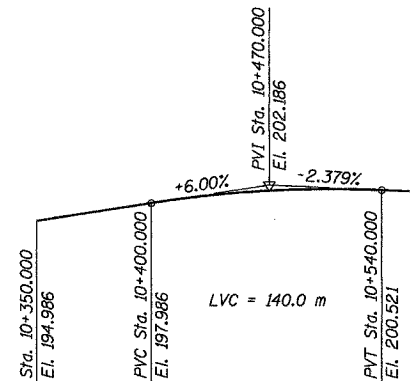
DESIGN STRESSES

FIELD UNITS

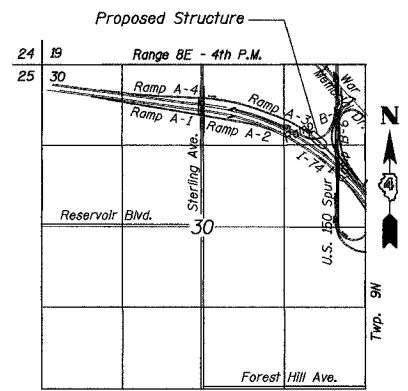
f'c = 24 MPa
fy = 400 MPa (Reinf.)



PROFILE GRADE RAMP B-5
(Along Ramp B-5)



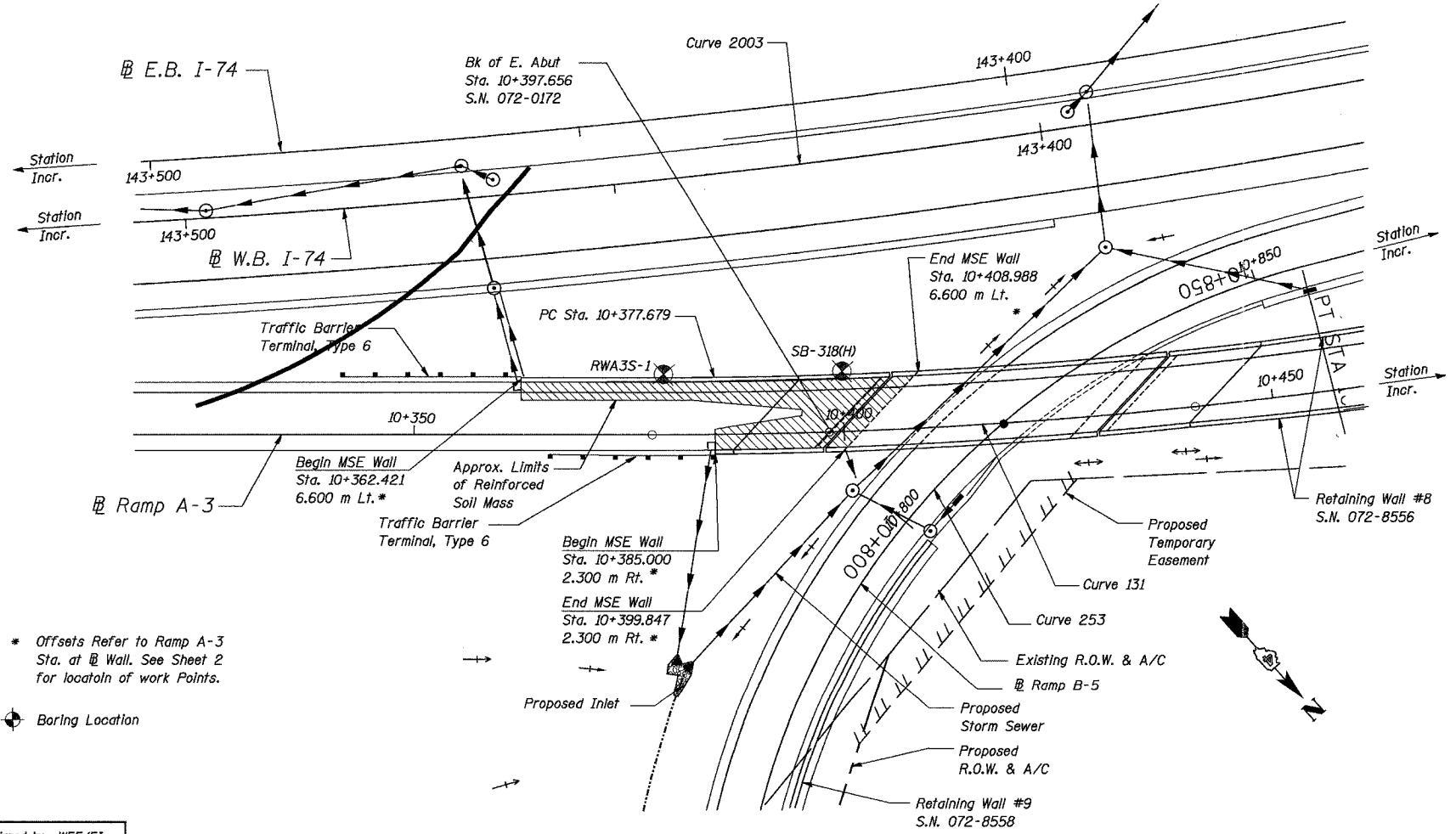
PROFILE GRADE RAMP A-3
(Along Ramp A-3)



LOCATION SKETCH

Removal limits below top of existing grade. Final limits of Removal and Disposal of Unsuitable Materials shall be determined by the Engineer at the time of construction.

MSE WALL ELEVATION - RAMP A-3
(Unfolded Elevation View)



PLAN

* Offsets Refer to Ramp A-3 Sta. at @ Wall. See Sheet 2 for locatoin of work Points.

Boring Location



Time: 12:38 PM

Date: 11/22/2004

Filename: P:\643996\structural\072-8557-Wall #8A\sheet\TR\acings\GP000-1A0728557.dgn

Designed by: WEE/EI
Checked by: AK/CTJ
Drafted by: EI
Checked by: AK/CTJ

REVISION	DATE	DESCRIPTION
STATE OF ILLINOIS DEPARTMENT OF TRANSPORTATION		
GENERAL PLAN AND ELEVATION		
MSE WALL NO. 8A - RAMP A-3 F.A.I. ROUTE 74 SECTION (72-7)R-3 PEORIA COUNTY STA. 10+362.421 TO STA. 10+408.988 (RAMP A-3) STRUCTURE NUMBER 072-8557		
PARSONS TRANSPORTATION GROUP CHICAGO, ILLINOIS		
DRAWING NO. 1	SCALE N.T.S.	DATE 6/25/04
		SHEET NO. 1