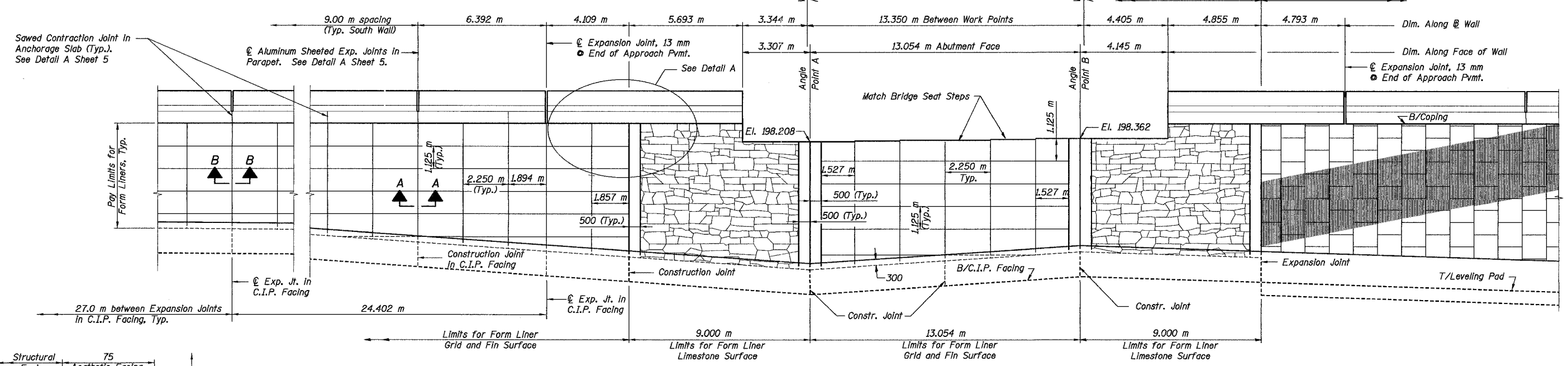


ROUTE NO.	SECT.	COUNTY	SHEET NO.	TOTAL SHEETS
F.A.I. 74	(72-7) R-3	PEORIA	583	1360
FED. ROAD DIST. NO. 7	ILLINOIS	FED. AID PROJECT		

CONTRACT NO. 68200

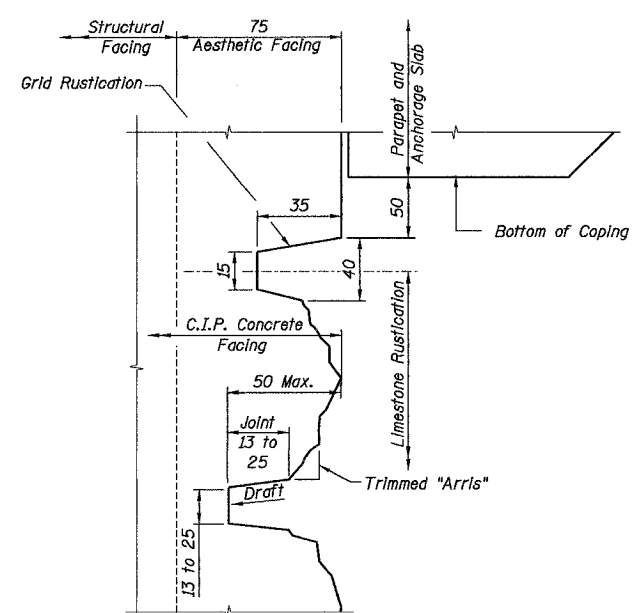
Date: 11/22/2004 Time: 11:58:17 AM

File name: P:\643996\Structure\A3\072-8556\sheet\Tracings\AED001-1A0728556.dgn

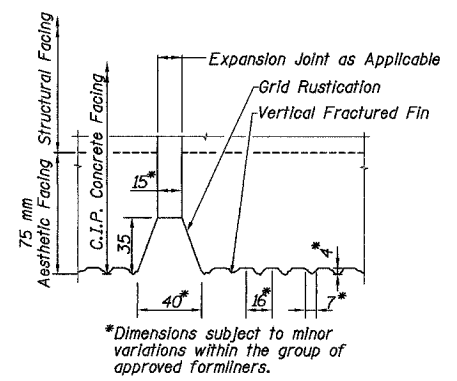


RUSTICATION AT ABUTMENT

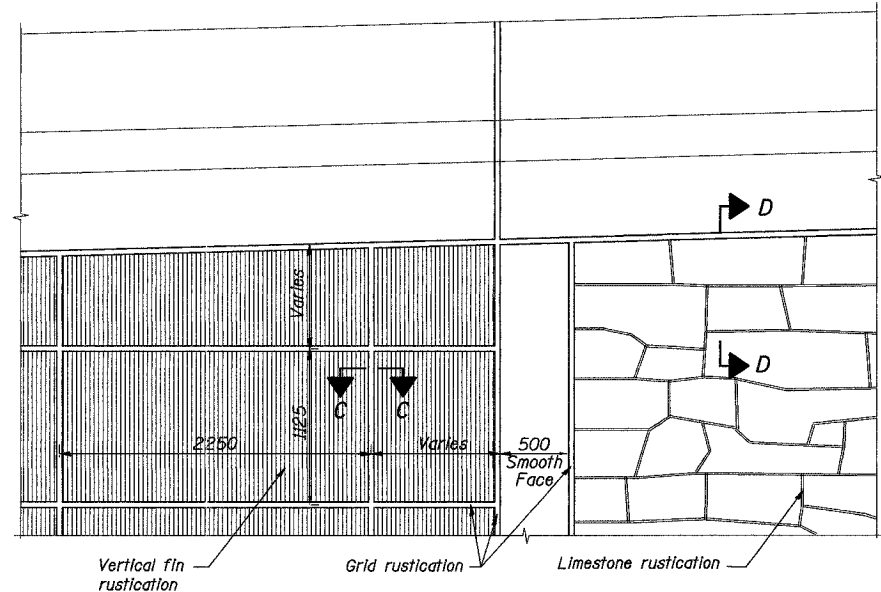
**The texture of the precast face panels shall be Fractured Fin, as approved by the Engineer, See Detail this Sheet. Cost included in Mechanically Stabilized Earth Retaining Walls.



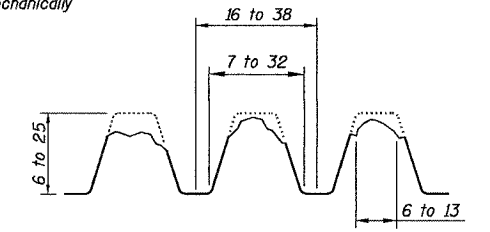
SECTION D-D



SECTION C-C



DETAIL A

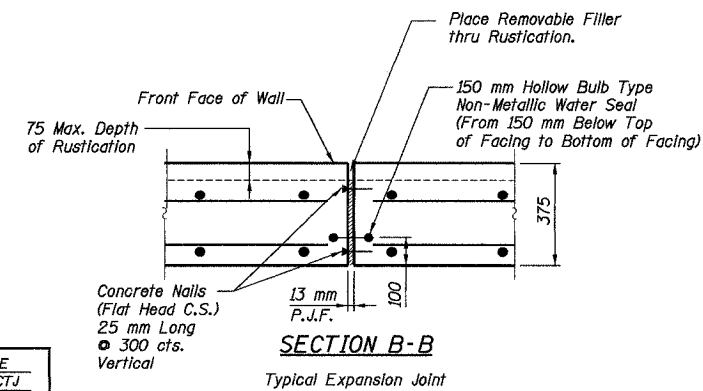


Fractured fin rustications shall be placed on precast mechanically stabilized earth retaining wall panels.

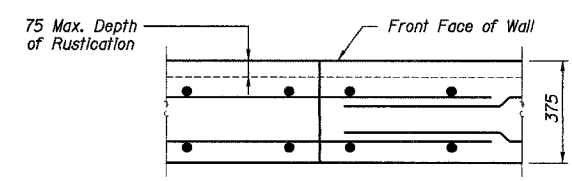
Fractured fin rustication is included in the cost of mechanically stabilized earth retaining wall.

PRECAST MSE PANEL FRACTURED FIN DETAIL
NTS

Note: All dimensions are in millimeters (mm) except as noted.



SECTION B-B
Typical Expansion Joint



SECTION A-A
Typical Construction Joint

Designed by: WEE
Checked by: AK/CTJ
Drafted by: RKS
Checked by: AK/CTJ

REVISION	DATE	DESCRIPTION
STATE OF ILLINOIS DEPARTMENT OF TRANSPORTATION		
AESTHETIC DETAILS		
MSE WALL NO. 8 - RAMP A-3 F.A.I. ROUTE 74 SECTION (72-7) R-3 PEORIA COUNTY STA. 10+426.116 TO STA. 10+673.439 (RAMP A-3) STRUCTURE NUMBER 072-8556		
PARSONS TRANSPORTATION GROUP CHICAGO, ILLINOIS		
DRAWING NO. 7	SCALE N.T.S.	DATE 6-25-04
		SHEET NO. 7