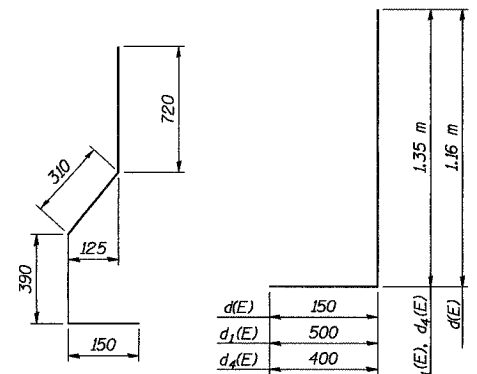


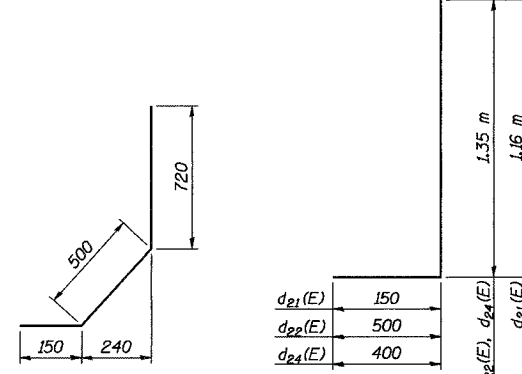
Date: 11/22/2004  
 Time: 11:57:25 AM  
 File name: P:\643996\str\ct\ur\A3\072-8556\sheet\Tracings\SD00003-1A0728556.dgn

**JOINT DATA**

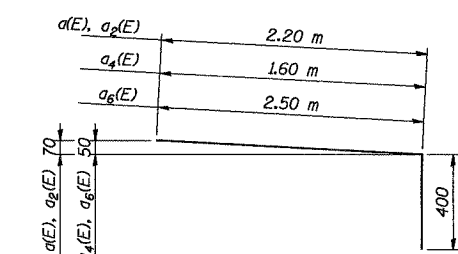
	South Wall			North Wall		
	Station Ramp A-3	Edge of Pavement Elevation	B/Coping Line Elevation	Station Ramp A-3	Edge of Pavement Elevation	B/Coping Line Elevation
Begin Parapet/FF Backwall	10+439.484	199.722	199.121	10+430.504	199.538	198.942
End Approach	10+449.394	200.053	199.445	10+440.116	199.911	199.279
Joint	N/A	N/A	N/A	10+446.748	200.137	199.500
Joint	10+451.302	200.110	199.501	10+451.302	200.277	199.637
Joint	10+455.856	200.237	199.625	10+455.856	200.404	199.761
Joint	10+460.410	200.351	199.736	10+460.410	200.518	199.872
Joint	10+464.964	200.454	199.836	10+464.964	200.621	199.972
Joint	10+469.518	200.544	199.922	10+469.518	200.711	200.059
Joint	10+474.072	200.621	199.996	10+474.072	200.788	200.133
Joint	10+478.626	200.687	200.059	10+478.626	200.854	200.198
Joint	10+483.180	200.739	200.108	10+483.180	200.906	200.250
Joint	10+487.734	200.780	200.148	10+487.734	200.947	200.291
Joint	10+492.288	200.807	200.175	10+492.288	200.974	200.318
Joint	10+496.842	200.823	200.191	10+496.842	200.990	200.334
Joint	10+501.396	200.840	200.208	10+501.396	200.993	200.337
Joint	10+505.940	200.858	200.226	10+505.940	200.984	200.328
Joint	10+510.467	200.862	200.230	10+510.467	200.962	200.306
Joint	10+514.994	200.854	200.222	10+514.994	200.928	200.272
Joint	10+519.521	200.809	200.177	10+519.521	200.882	200.226
Joint	10+524.048	200.751	200.119	10+524.048	200.824	200.168
Joint	10+528.575	200.680	200.048	10+528.575	200.753	200.097
Joint	10+533.102	200.597	199.965	10+533.102	200.670	200.014
Joint	10+537.629	200.502	199.870	10+537.629	200.575	199.919
Joint	10+542.156	200.396	199.764	10+542.156	200.469	199.813
Joint	10+546.683	200.289	199.657	10+546.683	200.362	199.706
Joint	10+551.210	200.181	199.549	10+551.210	200.254	199.598
Joint	10+555.737	200.073	199.441	10+555.737	200.146	199.490
Joint	10+560.264	199.965	199.333	10+560.264	200.038	199.382
Joint	10+564.791	199.858	199.226	10+564.791	199.931	199.275
Joint	10+569.318	199.750	199.118	10+569.318	199.823	199.167
Joint	10+573.845	199.642	199.010	10+573.845	199.715	199.059
Joint	10+578.372	199.535	198.903	10+578.372	199.608	198.952
Joint	10+582.899	199.427	198.795	10+582.899	199.500	198.844
Joint	10+587.426	199.319	198.687	10+587.426	199.392	198.736
Joint	10+591.953	199.211	198.579	10+591.953	199.284	198.628
Joint	10+596.480	199.104	198.472	10+596.480	199.177	198.521
Joint	10+601.007	198.996	198.364	10+601.007	199.069	198.413
Joint	10+605.534	198.888	198.256	10+605.534	198.961	198.305
Joint	10+610.061	198.781	198.149	10+610.061	198.854	198.198
Joint	10+614.588	198.673	198.041	10+614.588	198.746	198.090
Joint	10+619.115	198.565	197.933	10+619.115	198.638	197.982
Joint	10+623.642	198.457	197.825	10+623.642	198.531	197.875
Joint/End South Wall	10+628.169	198.350	197.718	10+628.169	198.423	197.767
Joint				10+632.696	198.315	197.659
Joint				10+637.223	198.207	197.551
Joint				10+641.750	198.100	197.444
Joint				10+646.277	197.992	197.336
Joint				10+650.804	197.884	197.228
Joint				10+655.331	197.777	197.121
Joint				10+659.858	197.669	197.013
Joint				10+664.385	197.561	196.905
Joint				10+668.912	197.453	196.797
End				10+673.439	197.346	196.690



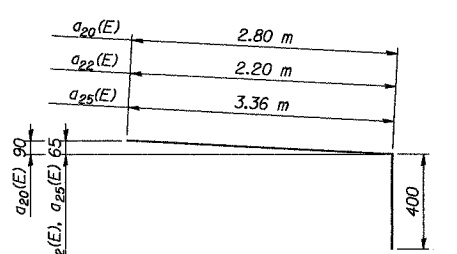
**BARS  $d_3(E)$ ,  $d_{23}(E)$  BARS  $d(E)$ ,  $d_1(E)$ ,  $d_4(E)$**



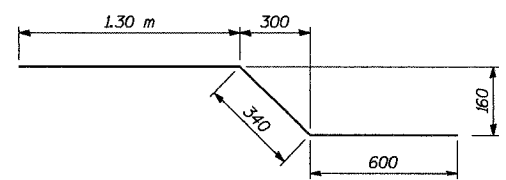
**BARS  $d_2(E)$ ,  $d_{20}(E)$  BARS  $d_{21}(E)$ ,  $d_{22}(E)$ ,  $d_{24}(E)$**



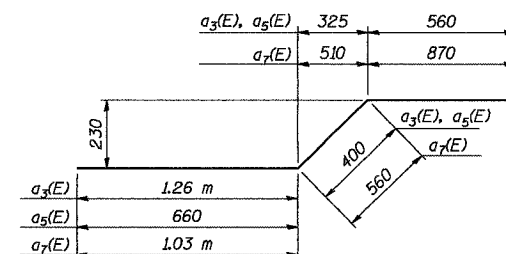
**BARS  $a(E)$ ,  $a_2(E)$ ,  $a_4(E)$ ,  $a_6(E)$**



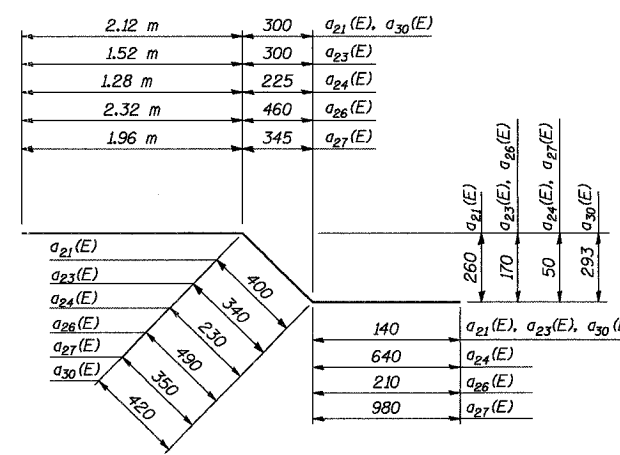
**BARS  $a_{20}(E)$ ,  $a_{22}(E)$ ,  $a_{25}(E)$**



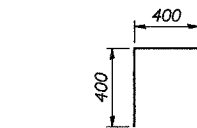
**BAR  $a_1(E)$**



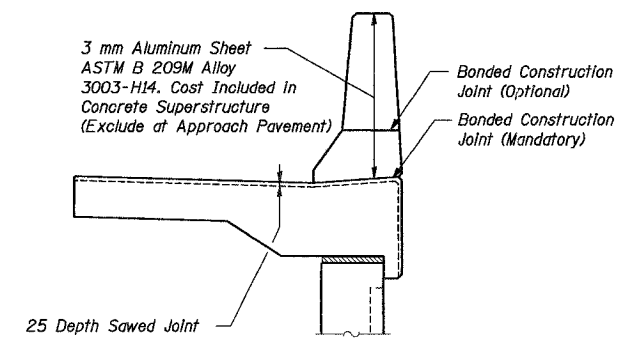
**BARS  $a_3(E)$ ,  $a_5(E)$ ,  $a_7(E)$**



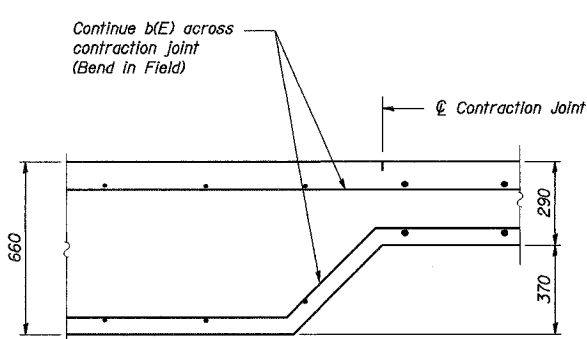
**BARS  $a_{21}(E)$ ,  $a_{23}(E)$ ,  $a_{24}(E)$ ,  $a_{26}(E)$ ,  $a_{27}(E)$ ,  $a_{30}(E)$**



**BAR  $a_9(E)$ ,  $a_{28}(E)$**



**DETAIL A**



**SECTION E-E**

**BILL OF MATERIAL**

South Wall				
Bar	No.	Size	Length (m)	Shape
$a(E)$	526	25	2.60	┌
$a_1(E)$	526	20	2.24	┌
$a_2(E)$	123	15	2.60	┌
$a_3(E)$	123	15	2.22	┌
$a_4(E)$	34	15	2.00	┌
$a_5(E)$	34	15	1.62	┌
$a_6(E)$	3	15	2.90	┌
$a_7(E)$	3	15	2.46	┌
$a_8(E)$	6	15	0.90	┌
$a_9(E)$	3	15	0.80	┌
$a_{10}(E)$	314	25	0.60	┌
$b(E)$	418	15	8.76	—
$b_1(E)$	10	15	9.00	—
$b_2(E)$	7	15	9.70	—
$d(E)$	3	15	1.31	┘
$d_1(E)$	625	15	1.85	┘
$d_2(E)$	679	15	1.36	┘
$d_3(E)$	3	15	1.57	┘
$d_4(E)$	3	15	1.75	┘
$e(E)$	152	15	8.90	—
$e_1(E)$	38	25	8.90	—
$e_2(E)$	8	15	6.30	—
$e_3(E)$	2	25	6.30	—
$e_4(E)$	8	15	9.70	—
$e_5(E)$	2	25	9.70	—
Reinforcement Bars, Epoxy Coated		kg	23130	
Concrete Structures		$m^3$	164.5	
Concrete Superstructure		$m^3$	57.3	

**BILL OF MATERIAL**

North Wall				
Bar	No.	Size	Length (m)	Shape
$a_{20}(E)$	852	25	3.20	┌
$a_{21}(E)$	125	20	2.66	┌
$a_{22}(E)$	33	25	2.60	┌
$a_{23}(E)$	18	20	2.00	┌
$a_{24}(E)$	15	20	2.15	┌
$a_{25}(E)$	3	25	3.76	┌
$a_{26}(E)$	2	20	3.02	┌
$a_{27}(E)$	1	20	3.29	┌
$a_{28}(E)$	3	15	0.80	┌
$a_{29}(E)$	402	25	0.60	┌
$a_{30}(E)$	727	20	2.68	┌
$b_{20}(E)$	644	15	8.98	—
$b_{21}(E)$	14	15	8.90	—
$b_{22}(E)$	7	15	9.55	—
$d_{20}(E)$	883	15	1.36	┘
$d_{21}(E)$	795	15	1.31	┘
$d_{22}(E)$	14	15	1.85	┘
$d_{23}(E)$	3	15	1.57	┘
$d_{24}(E)$	3	15	1.75	┘
$e_{20}(E)$	200	15	9.07	—
$e_{21}(E)$	50	25	9.07	—
$e_{22}(E)$	8	15	6.56	—
$e_{23}(E)$	2	25	6.56	—
$e_{24}(E)$	8	15	9.55	—
$e_{25}(E)$	2	25	9.55	—
Reinforcement Bars, Epoxy Coated		kg	35530	
Concrete Structures		$m^3$	223.5	
Concrete Superstructure		$m^3$	71.6	

Notes:  
 Reinforcement bars designated (E) shall be epoxy coated.  
 All dimensions are in millimeters (mm) except as noted.

REVISION	DATE	DESCRIPTION

**STATE OF ILLINOIS**  
**DEPARTMENT OF TRANSPORTATION**  
**ANCHORAGE SLAB AND PARAPET REINFORCING DETAILS I**  
 MSE WALL NO. 8 - RAMP A-3  
 F.A.I. ROUTE 74 SECTION (72-7) R-3  
 PEORIA COUNTY  
 STA. 10+426.116 TO STA. 10+673.439 (RAMP A-3)  
 STRUCTURE NUMBER 072-8556

DRAWING NO.	SCALE	DATE	SHEET NO.
5	N.T.S.	6-25-04	5

Designed by: WEE  
 Checked by: AK/CTJ  
 Drafted by: RKS  
 Checked by: AK/CTJ