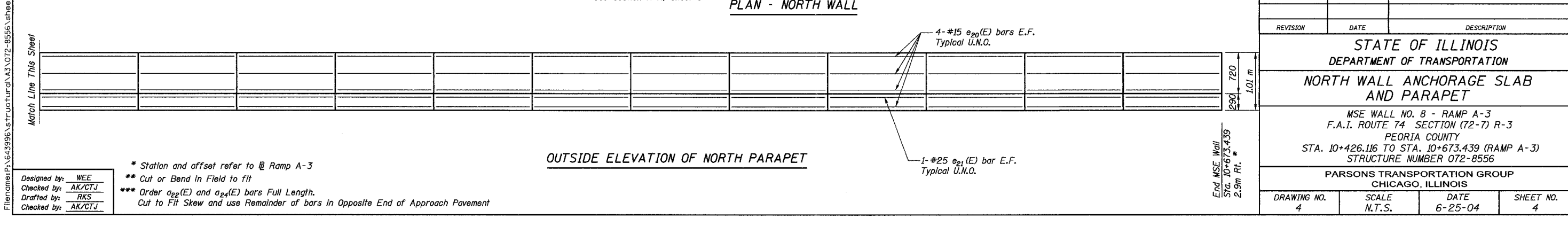
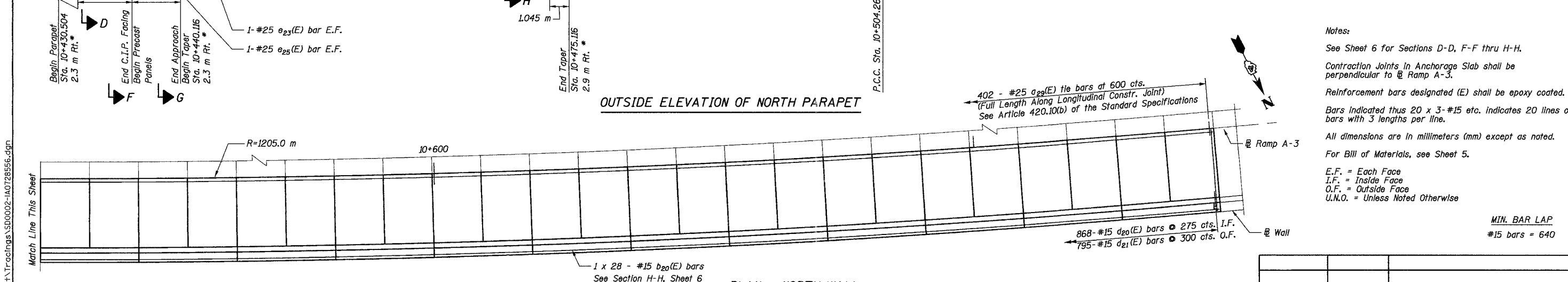
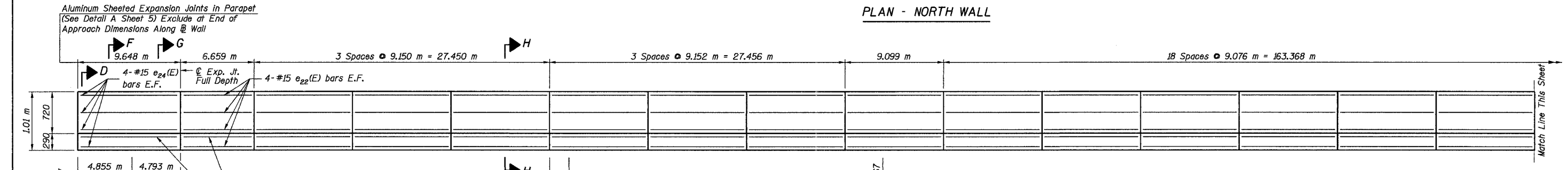
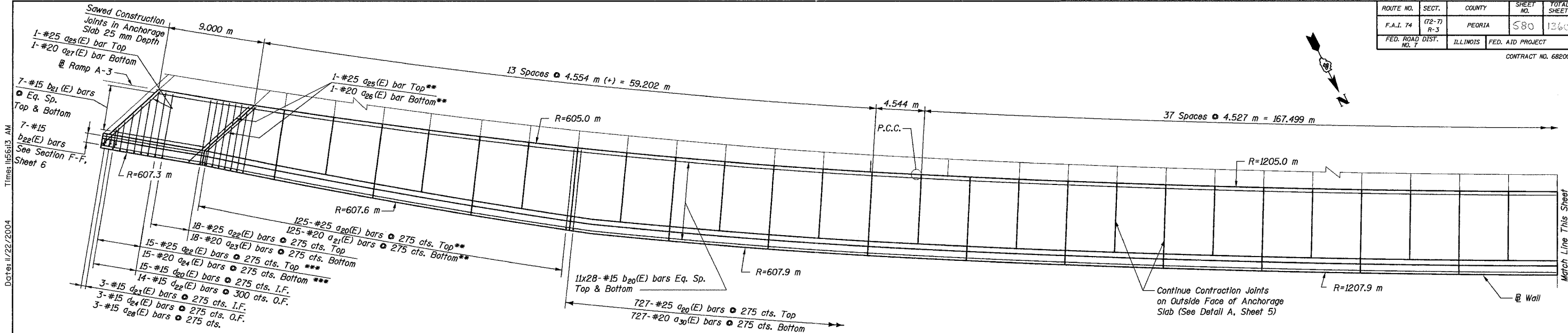


ROUTE NO.	SECT.	COUNTY	SHEET NO.	TOTAL SHEETS
F.A.I. 74	(72-7) R-3	PEORIA	580	1360
FED. ROAD DIST. NO. 7	ILLINOIS	FED. AID PROJECT		

CONTRACT NO. 68200



**Notes:**

See Sheet 6 for Sections D-D, F-F thru H-H.

Contraction Joints in Anchorage Slab shall be perpendicular to @ Ramp A-3.

Reinforcement bars designated (E) shall be epoxy coated.

Bars indicated thus 20 x 3-#15 etc. indicates 20 lines of bars with 3 lengths per line.

All dimensions are in millimeters (mm) except as noted.

For Bill of Materials, see Sheet 5.

E.F. = Each Face  
I.F. = Inside Face  
O.F. = Outside Face  
U.N.O. = Unless Noted Otherwise

MIN. BAR LAP  
#15 bars = 640

REVISION	DATE	DESCRIPTION
STATE OF ILLINOIS DEPARTMENT OF TRANSPORTATION NORTH WALL ANCHORAGE SLAB AND PARAPET		
MSE WALL NO. 8 - RAMP A-3 F.A.I. ROUTE 74 SECTION (72-7) R-3 PEORIA COUNTY STA. 10+426.116 TO STA. 10+673.439 (RAMP A-3) STRUCTURE NUMBER 072-8556		
PARSONS TRANSPORTATION GROUP CHICAGO, ILLINOIS		
DRAWING NO. 4	SCALE N.T.S.	DATE 6-25-04
		SHEET NO. 4

Designed by: WEE  
Checked by: AK/CTJ  
Drafted by: RKS  
Checked by: AK/CTJ

\* Station and offset refer to @ Ramp A-3  
\*\* Cut or Bend in Field to fit  
\*\*\* Order  $a_{22}(E)$  and  $a_{24}(E)$  bars Full Length. Cut to Fit Skew and use Remainder of bars in Opposite End of Approach Pavement

Date: 11/22/2004 Time: 11:56:13 AM File: P:\643996\structure\A3\072-8556\sheet\Tracings\SD00002-1A0728556.dgn