

**BILL OF MATERIAL - NORTH END    BILL OF MATERIAL - SOUTH END**

| Bar                   | No. | Size           | Length (m) | Shape |
|-----------------------|-----|----------------|------------|-------|
| a                     | 40  | #25            | 4.61       | U     |
| a <sub>1</sub>        | 10  | #13            | 4.05       | —     |
| a <sub>2</sub>        | 17  | #25            | 4.86       | —     |
| a <sub>3</sub>        | 48  | #22            | 3.59       | U     |
| a <sub>4</sub>        | 8   | #13            | 2.83       | —     |
| a <sub>5</sub>        | 24  | #22            | 3.78       | —     |
| a <sub>6</sub>        | 3   | #13            | 2.68       | —     |
| b                     | 36  | #16            | 9.45       | —     |
| d                     | 104 | #16            | 1.40       | —     |
| h                     | 16  | #16            | 7.17       | —     |
| h <sub>1</sub>        | 12  | #16            | 10.03      | —     |
| h <sub>2</sub>        | 13  | #22            | 5.65       | —     |
| h <sub>3</sub>        | 11  | #19            | 5.65       | —     |
| h <sub>4</sub>        | 11  | #19            | 2.90       | —     |
| h <sub>5</sub>        | 25  | #16            | 5.55       | —     |
| h <sub>6</sub>        | 25  | #16            | 10.53      | —     |
| h <sub>7</sub>        | 4   | #16            | 8.33       | —     |
| h <sub>8</sub>        | 24  | #16            | 8.42       | —     |
| h <sub>9</sub>        | 22  | #16            | 1.66       | —     |
| h <sub>30</sub>       | 31  | #19            | 5.86       | —     |
| n                     | 105 | #25            | 5.05       | —     |
| s <sub>3</sub>        | 24  | #13            | 4.13       | □     |
| s <sub>4</sub>        | 14  | #13            | 4.70       | —     |
| s <sub>5</sub>        | 15  | #13            | 3.83       | □     |
| v                     | 55  | #16            | 2.90       | —     |
| v <sub>1</sub>        | 69  | #16            | 1.30       | —     |
| v <sub>2</sub>        | 14  | #13            | 2.79       | —     |
| v <sub>3</sub>        | 54  | #16            | 3.45       | —     |
| v <sub>4</sub>        | 16  | #16            | 4.46       | —     |
| v <sub>5</sub>        | 61  | #16            | 5.35       | —     |
| v <sub>6</sub>        | 66  | #16            | 2.75       | —     |
| v <sub>7</sub>        | 66  | #16            | 1.06       | —     |
| x                     | 154 | #13            | 1.56       | —     |
| x <sub>1</sub>        | 12  | #13            | 7.64       | —     |
| x <sub>2</sub>        | 6   | #13            | 8.92       | —     |
| Concrete Box Culverts |     | m <sup>3</sup> | 95.6       |       |
| Reinforcement Bars    |     | kg             | 9370       |       |

| Bar                   | No. | Size           | Length (m) | Shape |
|-----------------------|-----|----------------|------------|-------|
| a <sub>10</sub>       | 26  | #25            | 4.61       | U     |
| a <sub>11</sub>       | 11  | #13            | 4.05       | —     |
| a <sub>12</sub>       | 28  | #25            | 4.78       | —     |
| a <sub>13</sub>       | 48  | #22            | 3.59       | U     |
| a <sub>14</sub>       | 8   | #13            | 2.83       | —     |
| a <sub>15</sub>       | 38  | #22            | 3.72       | —     |
| a <sub>16</sub>       | 5   | #13            | 2.68       | —     |
| b <sub>10</sub>       | 27  | #16            | 9.93       | —     |
| d <sub>10</sub>       | 104 | #16            | 1.40       | —     |
| h <sub>10</sub>       | 16  | #16            | 8.37       | —     |
| h <sub>11</sub>       | 12  | #16            | 9.75       | —     |
| h <sub>12</sub>       | 13  | #22            | 6.26       | —     |
| h <sub>13</sub>       | 11  | #19            | 6.26       | —     |
| h <sub>14</sub>       | 11  | #19            | 1.90       | —     |
| h <sub>15</sub>       | 21  | #16            | 3.69       | —     |
| h <sub>16</sub>       | 21  | #16            | 9.09       | —     |
| h <sub>17</sub>       | 4   | #16            | 8.37       | —     |
| h <sub>18</sub>       | 8   | #16            | 10.24      | —     |
| h <sub>19</sub>       | 22  | #16            | 2.08       | —     |
| h <sub>20</sub>       | 31  | #19            | 7.05       | —     |
| n <sub>10</sub>       | 43  | #25            | 4.35       | —     |
| n <sub>11</sub>       | 41  | #19            | 2.12       | —     |
| s <sub>13</sub>       | 30  | #13            | 2.67       | □     |
| s <sub>14</sub>       | 16  | #13            | 4.12       | —     |
| s <sub>15</sub>       | 19  | #13            | 2.37       | □     |
| v <sub>10</sub>       | 53  | #16            | 2.90       | —     |
| v <sub>11</sub>       | 69  | #16            | 1.30       | —     |
| v <sub>12</sub>       | 16  | #13            | 2.35       | —     |
| v <sub>13</sub>       | 43  | #16            | 2.72       | —     |
| v <sub>14</sub>       | 13  | #16            | 3.73       | —     |
| v <sub>15</sub>       | 65  | #16            | 3.80       | —     |
| v <sub>16</sub>       | 78  | #16            | 2.75       | —     |
| v <sub>17</sub>       | 78  | #16            | 1.06       | —     |
| x                     | 154 | #13            | 1.56       | —     |
| x <sub>1</sub>        | 12  | #13            | 7.64       | —     |
| x <sub>2</sub>        | 6   | #13            | 8.92       | —     |
| Concrete Box Culverts |     | m <sup>3</sup> | 83.4       |       |
| Reinforcement Bars    |     | kg             | 7710       |       |

**Notes:**

All dimensions are in millimeters (mm) except as noted.

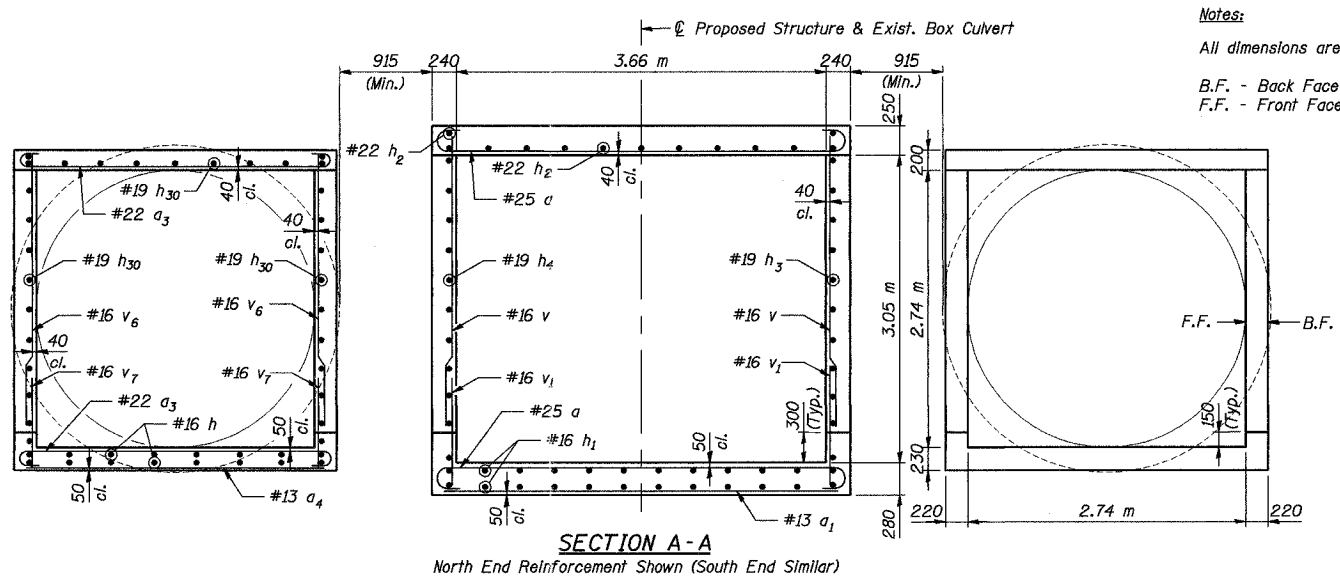
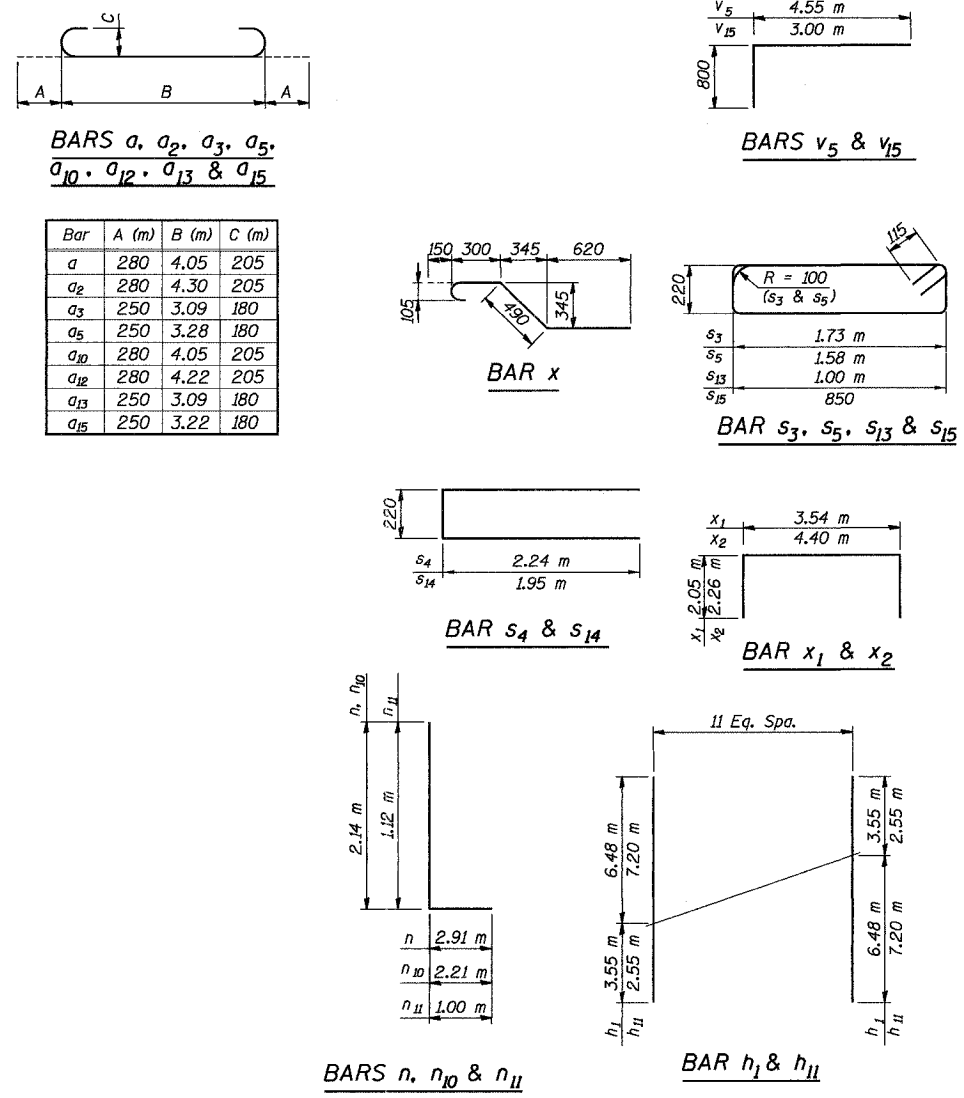
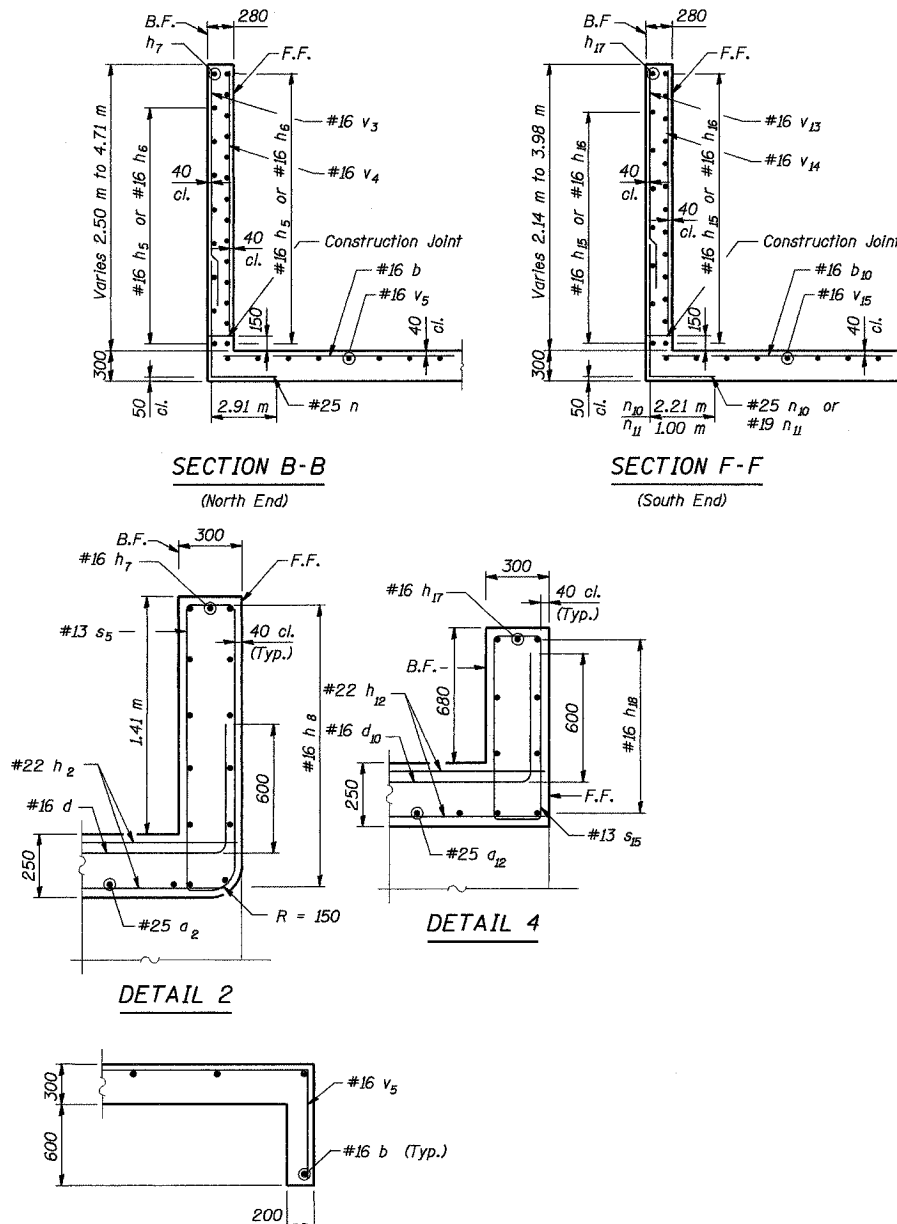
B.F. - Back Face  
F.F. - Front Face

**MIN. BAR LAP**

#13 Bar - 550

| REVISION  | DATE            | DESCRIPTION     |
|---|-----------------|-----------------|
| STATE OF ILLINOIS<br>DEPARTMENT OF TRANSPORTATION   |                 |                 |
| <b>BILL OF MATERIAL &amp; MISC. DETAILS</b>   |                 |                 |
| WAR MEMORIAL DRIVE OVER DRY RUN CREEK<br>F.A.I. ROUTE 74                      SEC. (72-7)R-3<br>PEORIA COUNTY STA. 39+899.517 (U.S. 150)<br>STRUCTURE NUMBER 072-2504 |                 |                 |
| PARSONS TRANSPORTATION GROUP<br>CHICAGO, ILLINOIS   |                 |                 |
| DRAWING NO.<br>6  | SCALE<br>N.T.S. | DATE<br>11/4/04 |
|   |                 | SHEET NO.<br>6  |

Date: 01/31/2005    Time: 09:36:54 AM    File: P:\643996\structure\072-2029-culvert\sheet\Tracings 2\RED002-1A072-2504.dgn



Designed by: WEE  
Checked by: AK  
Drafted by: RK-S  
Checked by: AK