

ROUTE NO.	SECT.	COUNTY	SHEET NO.	TOTAL SHEETS
F.A.I. 74	(72-7) R-3	PEORIA	501	1340
FED. ROAD DIST. NO. 7	ILLINOIS	FED. AID PROJECT	CONTRACT NO. 68200	

GENERAL NOTES

- Side retainers shall be galvanized after shop fabrication according to AASHTO M111 and ASTM A385.
- The structural steel bearing plates of the Elastomeric Bearing Assembly shall conform to the requirements of AASHTO M270M Grade 345.
- Reinforcement bars shall conform to the requirements of AASHTO M 31M, M 42M or M 53M Grade 400.
- Slope wall shall be reinforced with welded wire fabric, 152 x 152 - MW25.8 x MW25.8 with a mass of 2.91 kg/m².
- The back face of Closed Abutments and their wingwalls shall be waterproofed according to Article 503.18 of the Standard Specifications.
- The contractor shall drive one (1) concrete test pile in a permanent location at North Abutment and, one (1) steel test pile in a permanent location at South Abutment as directed by the Engineer before ordering the remainder of piles.
- Bridge Seat Sealer shall be applied to the seat area of the Abutments.
- All dimensions are in millimeters (mm) except as noted.
- The existing structural steel coating contains lead. The contractor should take appropriate precautions to deal with the presence of lead on this project.
- All existing aluminum bridge rail and rail bases are to be salvaged and delivered by the Contractor to the IDOT Bridge Maintenance Yard in East Peoria. The contact person is Dan Edwards at (309) 699-3823. The Contractor shall provide 24 hour notice in advance of delivery. All deliveries shall be Monday through Friday. The Contractor shall replace any rail that is damaged during removal.
- The concrete for bridge floors finished according to Article 503.17 of the Standard Specifications, shall be placed and compacted parallel to the skew in uniform increments along centerline of bridge. The finishing machine, when required, shall be set parallel to the skew for striking off and screeding the concrete.

INDEX OF DRAWINGS

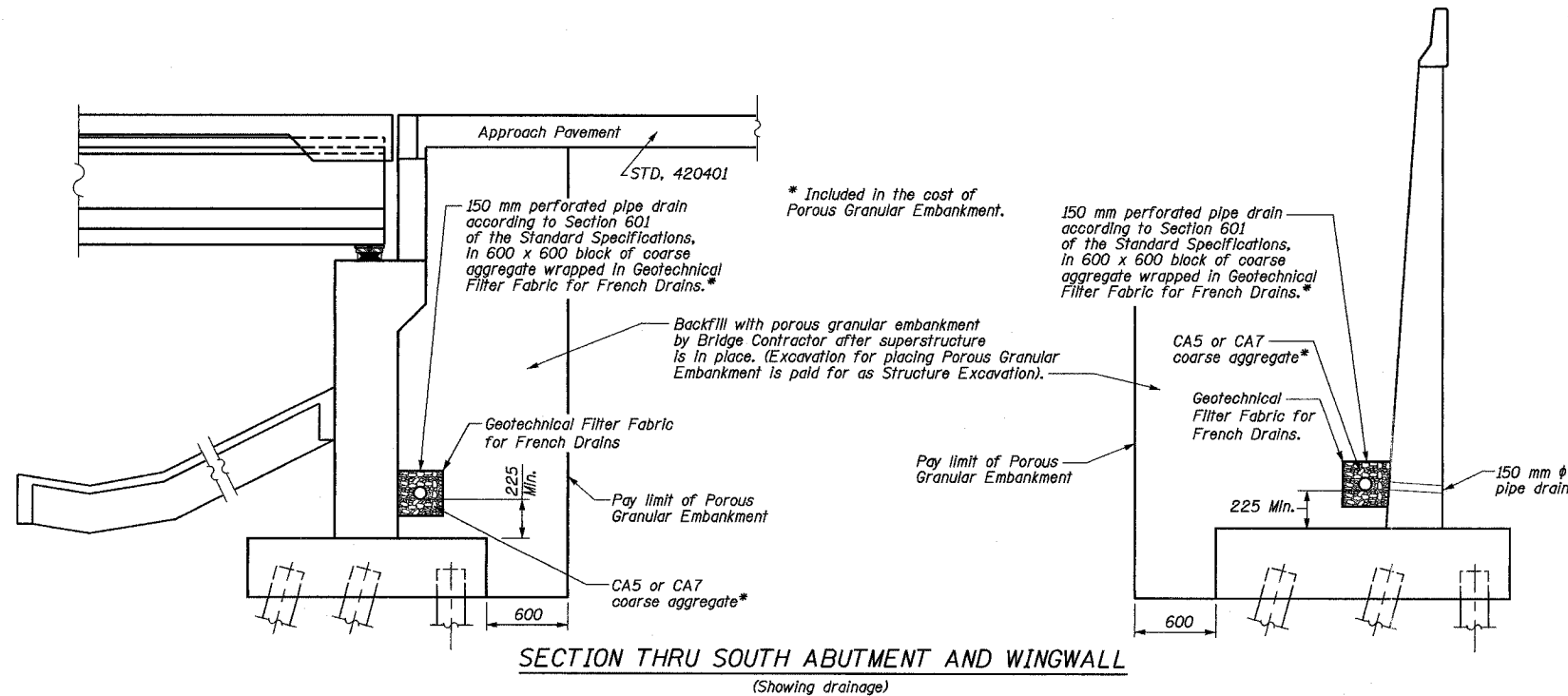
- General Plan
- General Notes, Total Bill of Material, Misc. Details
- Plan For Top of Slab Elevations
- Top of Slab Elevations I
- Top of Slab Elevations II
- Top of Slab Elevations III
- Deck Plan and Section - Span 1
- Diaphragm Details - Span 1
- Parapet and Median Details - Span 1
- Deck Plan and Section - Spans 2 & 3
- Diaphragm Details - Spans 2 & 3
- Median Barrier Elevation and Details - Spans 2 & 3
- Parapet Details - Spans 2 & 3
- Rolling Details - Single Rail
- Framing Plan and Temporary Bracing Details
- Beam Reaction and Moment Tables
- 914 mm PPC I-Beam Vaulted Span 1
- 1829 mm PPC Bulb T-Beam Span 2
- 1829 mm PPC Bulb T-Beam Span 3
- North and South Abutment Expansion Bearings Details
- North Abutment Plan and Elevation
- North Abutment Details I
- North Abutment Details II
- South Abutment Plan
- South Abutment Elevation
- South Abutment Details I
- South Abutment Details II
- South Abutment Details III
- South Abutment Details IV
- Abutment and Wingwall Rustication Details
- Pier
- Pier Details
- Drainage Scupper Type I
- Drainage Scupper Type II
- Neoprene Expansion Joint Details
- Bar Splicer Assembly Details
- Concrete Pile Details
- Anchor Bolt Details
- Boring Logs I
- Boring Logs II
- Boring Logs III
- Boring Logs IV
- Boring Logs V
- Boring Logs VI

TOTAL BILL OF MATERIAL

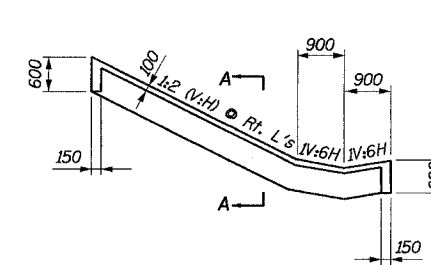
ITEM	UNIT	SUPER	SUB	TOTAL
Removal of Existing Structures #3	Each			1
Elastomeric Bearing Assembly, Type I	Each	18		18
Name Plates	Each		1	1
Porous Granular Embankment	m ³		562	562
Structure Excavation	m ³		1283	1283
Neoprene Expansion Joint 50 mm	m	25.5		25.5
Neoprene Expansion Joint 100 mm	m	25.5		25.5
Concrete Structures	m ³		962.4	962.4
Concrete Superstructure	m ³	483.0		483.0
Bridge Deck Grooving	m ²	1422		1422
Protective Coat	m ²	1856		1856
Furnishing And Erecting Precast Prestressed Concrete I-Beams 914 mm	m	123.4		123.4
Furnishing And Erecting Precast Prestressed Concrete Bulb T-Beams 1829 mm	m	598.6		598.6
Furnishing and Erecting Structural Steel	kg	1370		1370
Reinforcement Bars, Epoxy Coated	kg	61670	56250	116920
Slope Wall 100 mm	m ²		399	399
Furnishing Steel Piles HP310x79	m		828.0	828.0
Driving Steel Piles	m		828.0	828.0
Test Pile Steel HP310x79	Each		1	1
Furnishing Metal Pile Shells 305mm	m		150.0	150.0
Driving And Filling Shells	m		150.0	150.0
Test Pile Metal Shells	Each		1	1
Bridge Seat Sealer	m ²		56	56
Protective Shield	m ²	978		978
Drainage Scuppers, Type I	Each	4		4
Drainage Scuppers, Type II	Each	4		4
Bar Splicers	Each		84	84
Aluminum Rolling, Type H (Special)	m	183.5		183.5
Form Liner Limestone Surface	m ²		182	182
Form Liner Grid and Fin Surface	m ²		216	216

Date: 11/22/2004 Time: 09:06:54 AM

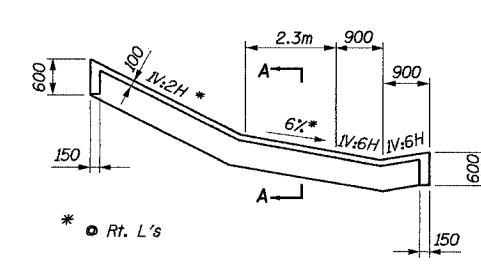
Filename: P:\64996\structure\072-0190\sheet\1\Tracings\NT000-1A0720190.dgn



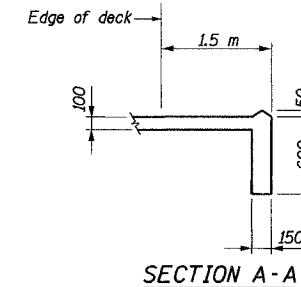
Note: 150 mm ϕ pipe drains to outlet to surface drainage on East and West Wingwall. Cost included with Porous Granular Embankment.



SECTION THRU SLOPEWALL (At North Abutment)



SECTION THRU SLOPEWALL (At South Abutment)



SECTION A-A

Designed by: AK
 Checked by: WEE
 Drafted by: FTE
 Checked by: WEE

REVISION	DATE	DESCRIPTION
STATE OF ILLINOIS DEPARTMENT OF TRANSPORTATION		
GENERAL NOTES, TOTAL BILL OF MATERIAL, MISC. DETAILS		
RAMPS B-3 AND B-5 OVER WAR MEMORIAL DR. AND RAMP B-6 F.A.I. ROUTE 74 SECTION (72-7) R-3 PEORIA COUNTY STA. 10+618.61 (RAMP B-3) STA. 10+472.60 (RAMP B-5) STRUCTURE NUMBER 072-0190		
PARSONS TRANSPORTATION GROUP CHICAGO, ILLINOIS		
DRAWING NO. 2	SCALE N.T.S.	DATE 2-21-03
		SHEET NO. 2