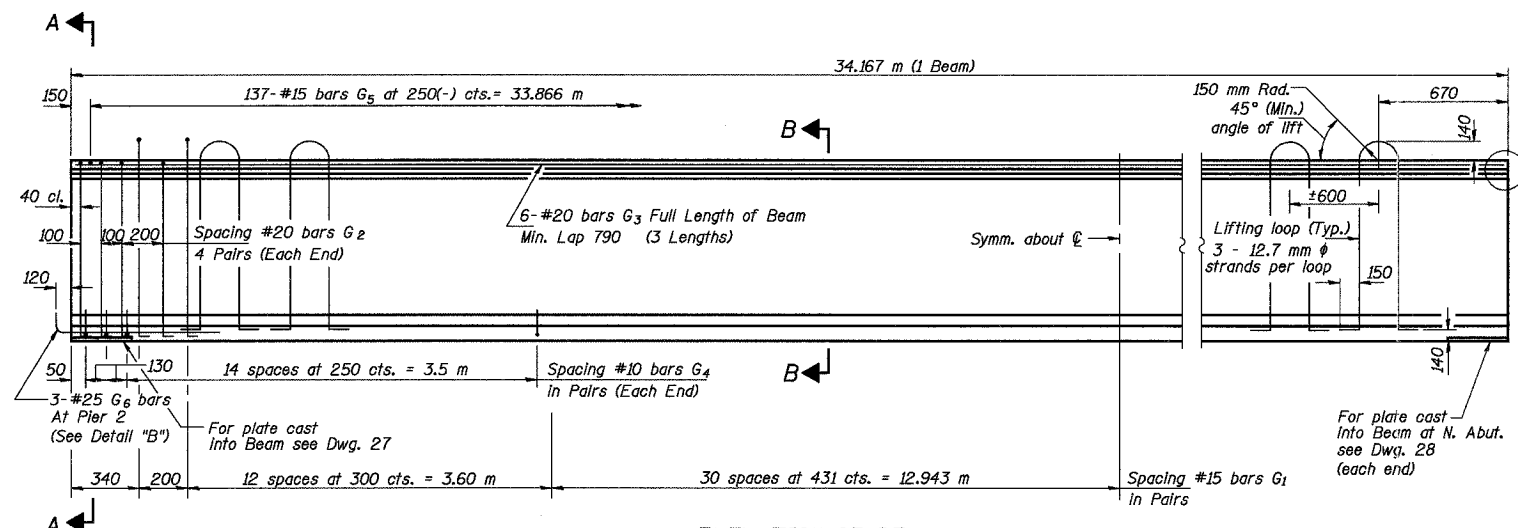
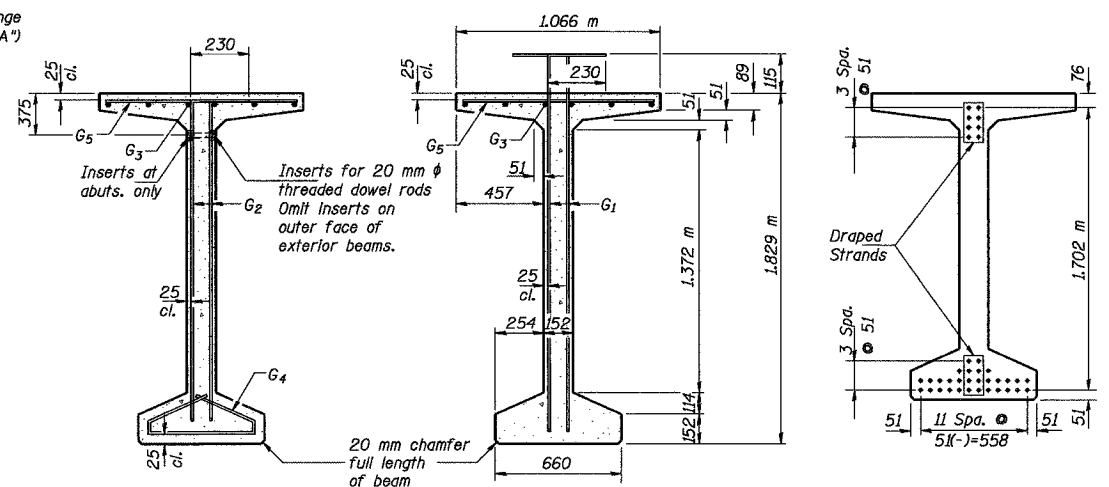


ROUTE NO.	SECT.	COUNTY	SHEET NO.	TOTAL SHEETS
F.A.I. 74	(72-7) R-3	PEORIA	4/67	1360
FED. ROAD DIST. NO. 7		ILLINOIS	FED. AID PROJECT	

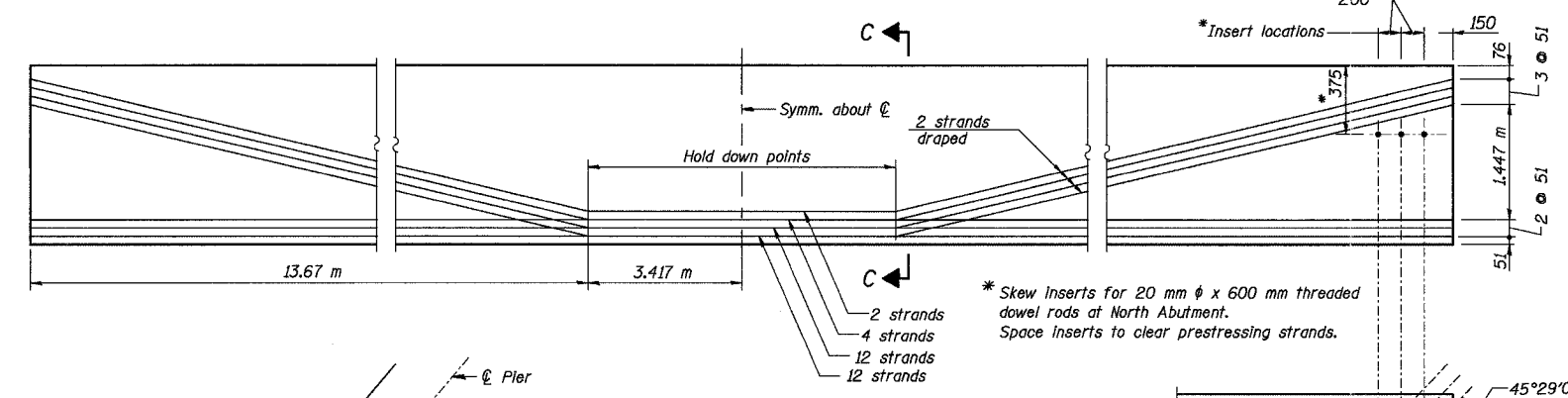
CONTRACT NO. 68200



**ELEVATION OF BEAM**  
(Showing Reinforcement & Dimensions)



**SECTION A-A**      **SECTION B-B**      **SECTION C-C**

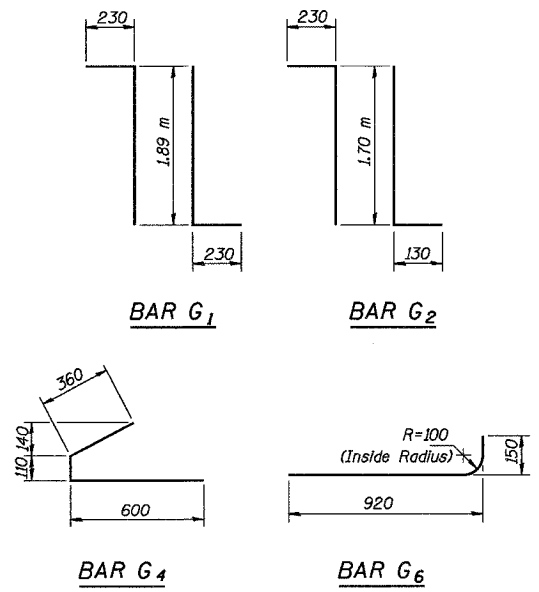


**ELEVATION OF BEAM**  
(Showing Prestressing Steel)

**\* BAR LIST**

Bar	No.	Size	Length (m)	Shape
G <sub>1</sub>	174	#15	2.35	TL
G <sub>2</sub>	16	#20	2.06	TL
G <sub>3</sub>	18	#20	11.95	—
G <sub>4</sub>	68	#10	1.07	—
G <sub>5</sub>	137	#15	1.01	—
G <sub>6</sub>	3	#25	1.07	—

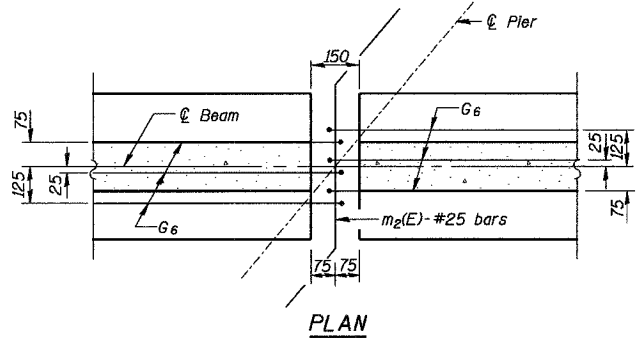
\* For one beam only.



**BAR G<sub>1</sub>**      **BAR G<sub>2</sub>**  
**BAR G<sub>4</sub>**      **BAR G<sub>6</sub>**

**BILL OF MATERIAL**

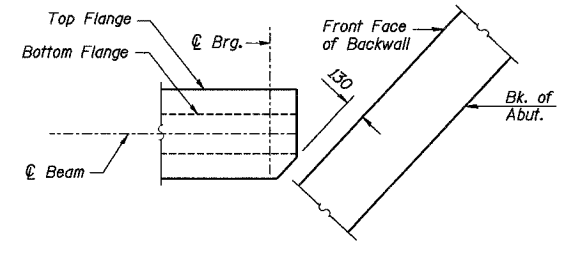
Item	Unit	Total
Furnishing and Erecting Precast Prestressed Concrete Bulb T-Beams, 1829 mm	m	34.17



**PLAN**

**ELEVATION**

**DETAIL "B"**



**DETAIL "A"**

- Notes:**
- All Inserts and threaded dowel rods for Inserts, reinforcing and Prestressing Steel, and other items which are cast into the Precast Concrete Bulb T-Beams shall be included in the contract unit price per meter of "Furnishing and Erecting Precast Prestressed Concrete Bulb T-Beams, 1829 mm".
  - Inserts for 20 mm  $\phi$  threaded dowel rods are to be two strut, coil type for interior beams and single coil, flared loop type for exterior beams.
  - Prestressing steel shall be uncoated high strength, low relaxation 7-wire strand ( $F_u = 1860$  MPa). The nominal diameter shall be 12.7 mm and the nominal cross-sectional area shall be 98.71 mm<sup>2</sup>.
  - Required release strength,  $f'_{ci}$ , shall be 35 MPa.
  - Non-prestressing steel shall conform to AASHTO designation M 31M, M 42M or M 53M Grade 400.
  - Reinforcement bars designated (E) shall be epoxy coated.
  - Lifting loops shall be 3 - 12.7 mm  $\phi$  strands ( $F_u = 1860$  MPa), as shown.
  - All dimensions are in millimeters (mm) except as noted.

\*\* Tie #25 m<sub>2</sub>(E) with 3.8 mm wire tightly fastened to prevent any movement between bars.

Designed by: AMK  
Checked by: WEE  
Drafted by: FTE/JMG  
Checked by: WEE

Date: 11/19/2004 Time: 10:03:57 AM File: P:\643996\structure\072-0183\Sheet\Tracings\SD0009-140720183.dgn

REVISION	DATE	DESCRIPTION	
<b>STATE OF ILLINOIS</b> <b>DEPARTMENT OF TRANSPORTATION</b> <b>1829 mm PPC BULB T-BEAM -</b> <b>FLARED BEAM NO. 11 SPAN 4</b> RAMPS B-1 AND B-4 OVER F.A.I. ROUTE 74 (I-74) RAMPS A-3 AND B-3 F.A.I. ROUTE 74 SECTION (72-7) R-3 PEORIA COUNTY STATION 10+779.03 STRUCTURE NUMBER 072-0183 <b>PARSONS TRANSPORTATION GROUP</b> <b>CHICAGO, ILLINOIS</b>			
DRAWING NO.	SCALE	DATE	SHEET NO.
24	N.T.S.	2-18-03	24