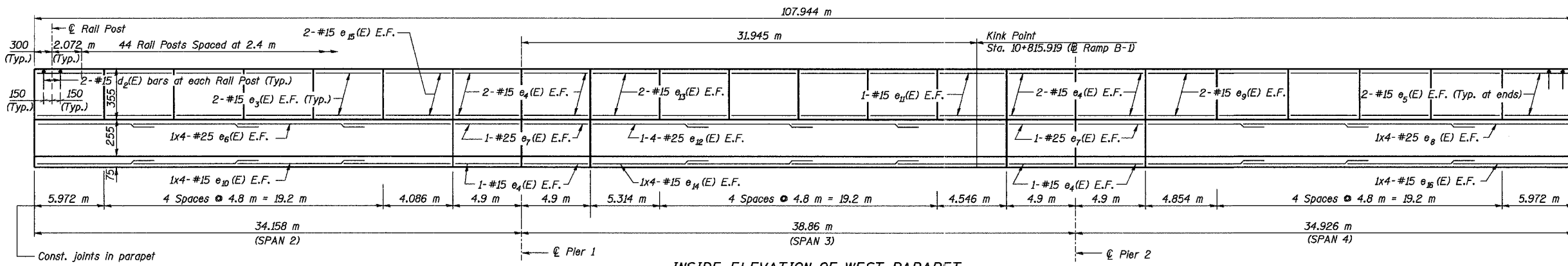


Time: 09:59:58 AM

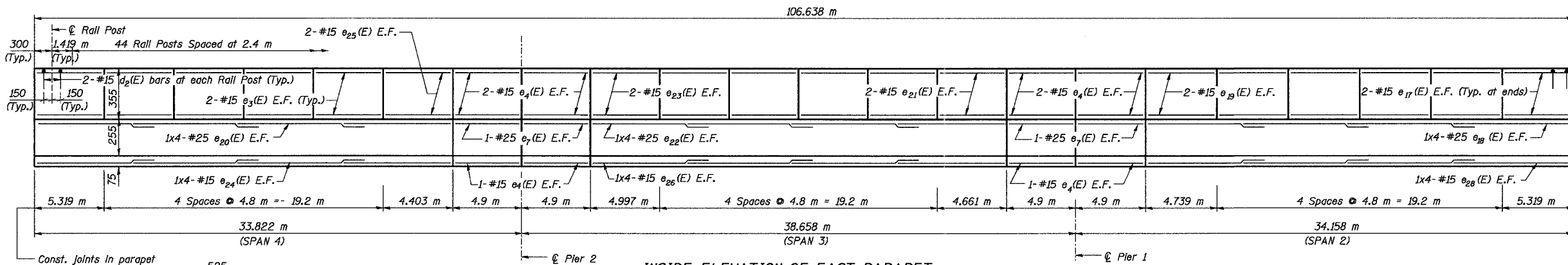
Date: 11/19/2004

File name: P:\643996\Structure\072-0183\Sheet\Tracings\SD0003-140720183.dgn

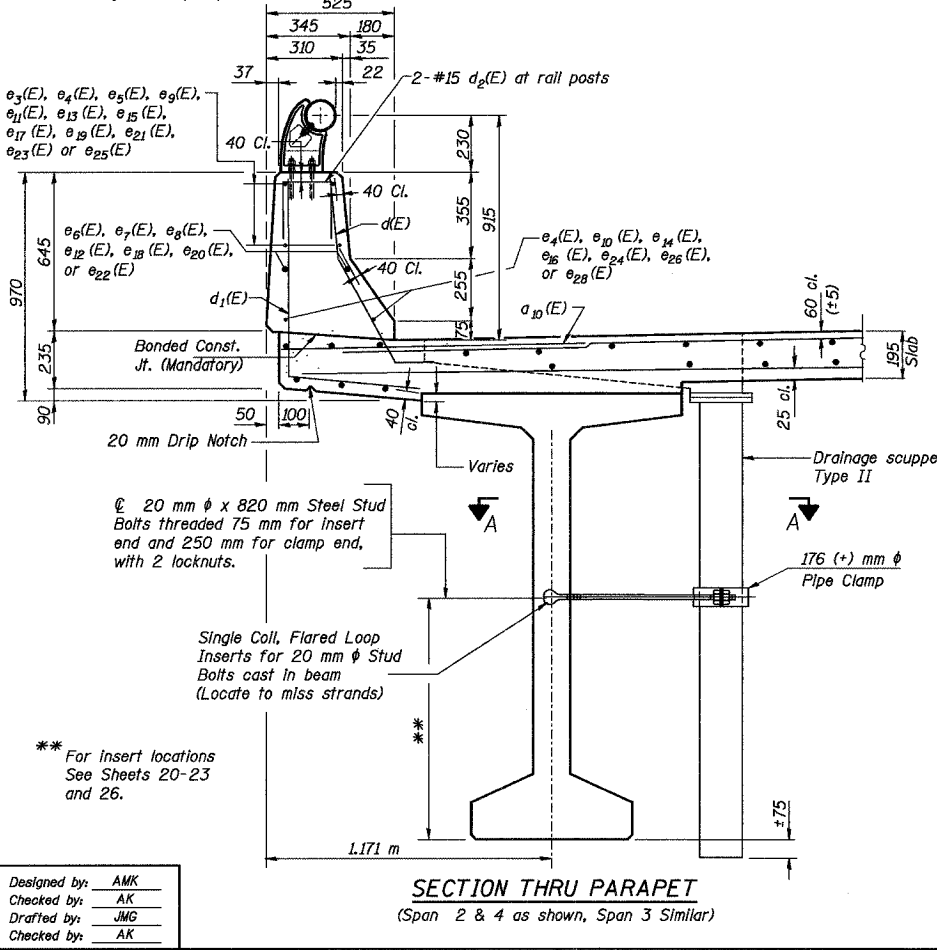
ROUTE NO.	SECT.	COUNTY	SHEET NO.	TOTAL SHEETS
F.A.I. 74	(72-7) R-3	PEORIA	458	1360
FED. ROAD DIST. NO. 7	ILLINOIS	FED. AID PROJECT		
			CONTRACT NO. 68200	



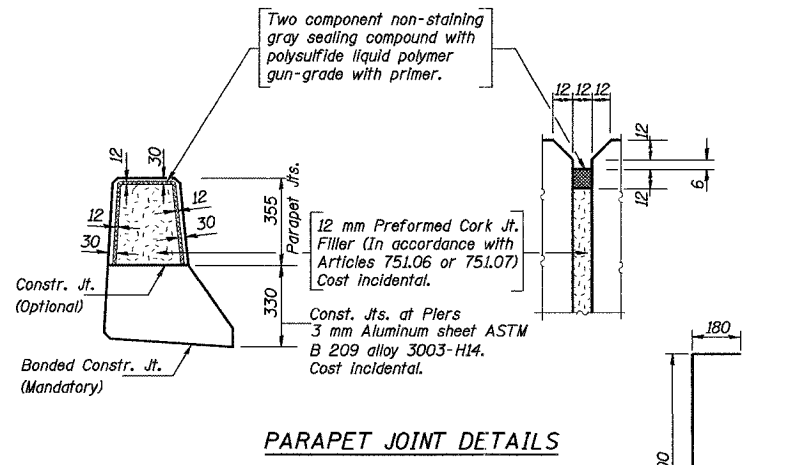
INSIDE ELEVATION OF WEST PARAPET
(Spans 2, 3, & 4)



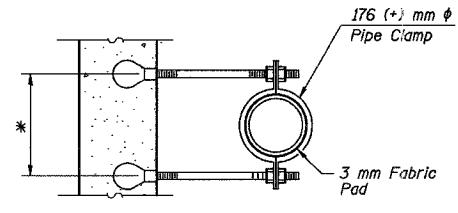
INSIDE ELEVATION OF EAST PARAPET
(Spans 2, 3, & 4)



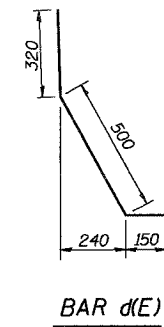
SECTION THRU PARAPET
(Span 2 & 4 as shown, Span 3 Similar)



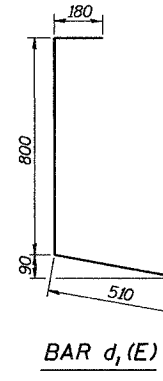
PARAPET JOINT DETAILS



SECTION A-A



BAR d(E)



BAR d1(E)

BAR d2(E)

SUPERSTRUCTURE BILL OF MATERIAL SPANS 2, 3 & 4

Bar	No.	Size	Length (m)	Shape
a10(E)	680	#20	1.20	
a11(E)	36	#25	9.45	
a12(E)	55	#20	2.90	
a13(E)	15	#20	3.20	
a14(E)	989	#15	9.50	
a15(E)	850	#15	10.85	
a16(E)	223	#15	8.50	
a17(E)	258	#15	9.90	
a18(E)	64	#15	.60	
b4(E)	1544	#15	8.80	
b5(E)	156	#15	9.15	
b6(E)	378	#30	7.90	
b7(E)	10	#15	7.50	
m10(E)	130	#15	2.90	
m11(E)	26	#20	2.18	
m12(E)	16	#25	3.10	
m13(E)	10	#15	3.20	
m14(E)	2	#20	2.48	
s3(E)	42	#15	5.62	
s4(E)	42	#15	5.44	
x(E)	29	#20	3.09	
x1(E)	41	#20	3.20	
x2(E)	79	#20	3.31	
x3(E)	29	#20	3.42	
x4(E)	13	#20	3.61	
Reinforcement Bars, Epoxy Coated		kg	95510	
Concrete Superstructure		m ³	610.3	

Bar	No.	Size	Length (m)	Shape
d(E)	783	#15	0.97	
d1(E)	718	#15	1.49	
d2(E)	184	#15	0.64	
d3(E)	357	#15	0.82	
d4(E)	778	#15	1.01	
d5(E)	369	#15	1.49	
e3(E)	96	#15	4.70	
e4(E)	92	#15	4.85	
e5(E)	8	#15	5.87	
e6(E)	16	#25	8.28	
e7(E)	24	#25	4.85	
e8(E)	8	#25	8.48	
e9(E)	4	#15	4.75	
e10(E)	16	#15	7.77	
e11(E)	4	#15	4.44	
e12(E)	8	#25	8.26	
e13(E)	4	#15	5.21	
e14(E)	8	#15	7.75	
e15(E)	4	#15	3.98	
e16(E)	8	#15	7.97	
e17(E)	8	#15	5.21	
e18(E)	8	#25	8.28	
e19(E)	4	#15	4.64	
e20(E)	16	#25	8.20	
e21(E)	4	#15	4.56	
e22(E)	16	#25	8.18	
e23(E)	4	#15	4.89	
e24(E)	16	#15	7.69	
e25(E)	4	#15	4.30	
e26(E)	16	#15	7.67	
e27(E)	45	#15	5.75	
e28(E)	8	#15	7.77	
e29(E)	45	#15	5.67	
e30(E)	45	#15	5.68	

Notes:
 Parapets shall have a smooth form lined surface on the exterior face.
 Slip forming is not allowed.
 Reinforcement bars designated (E) shall be epoxy coated.
 Bars indicated thus 1 x 3-#15 etc. indicates 1 line of bars with 3 lengths per line.
 For location of scuppers see General Plan.
 The clamping device and Inserts shall be galvanized according to with AASHTO M 232.
 All dimensions are in millimeters (mm) except as noted.
 E.F. = Each Face

MIN. BAR LAP
 #15 bar = 640 mm
 #25 bar = 1.32 m

REVISION	DATE	DESCRIPTION

STATE OF ILLINOIS
DEPARTMENT OF TRANSPORTATION

PARAPET ELEVATIONS AND DETAILS

RAMPS B-1 AND B-4 OVER F.A.I. ROUTE 74 (I-74)
RAMPS A-3 AND B-3
F.A.I. ROUTE 74 SECTION (72-7) R-3 PEORIA COUNTY
STATION 10+779.03 STRUCTURE NUMBER 072-0183

PARSONS TRANSPORTATION GROUP
CHICAGO, ILLINOIS

DRAWING NO.	SCALE	DATE	SHEET NO.
15	N.T.S.	2-18-03	15

Designed by: AMK
 Checked by: AK
 Drafted by: JMG
 Checked by: AK

** For Insert locations See Sheets 20-23 and 26.