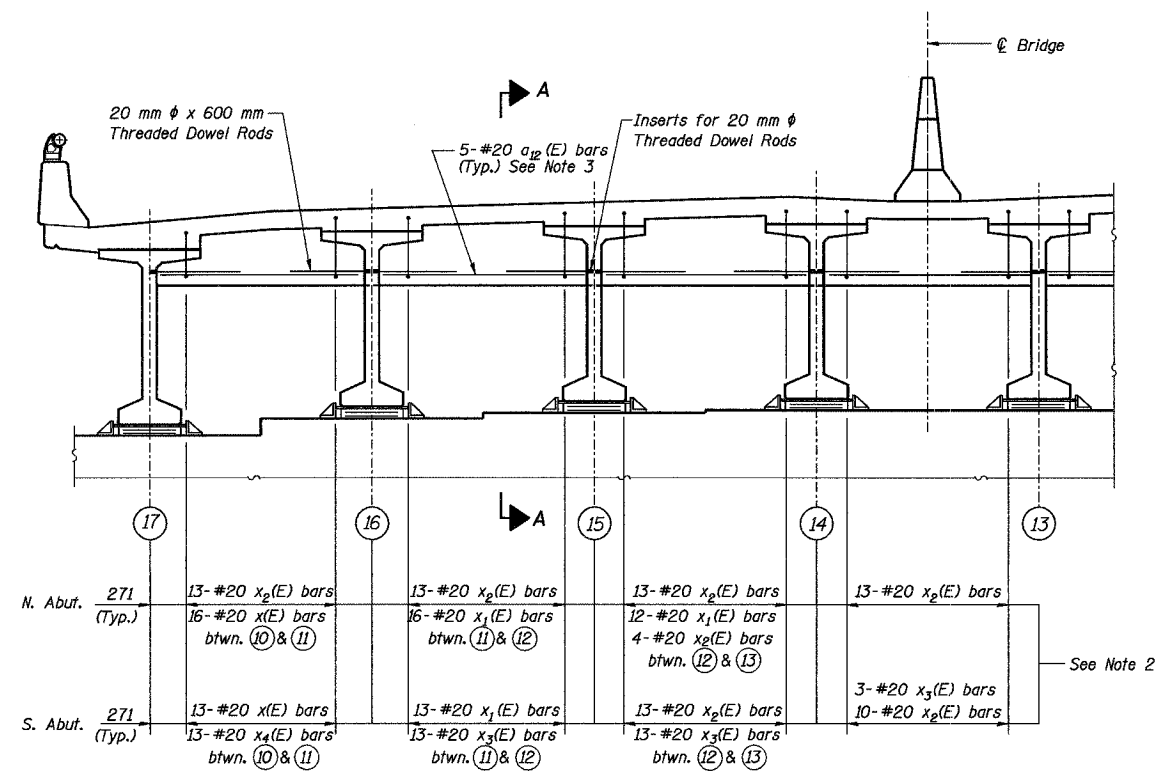
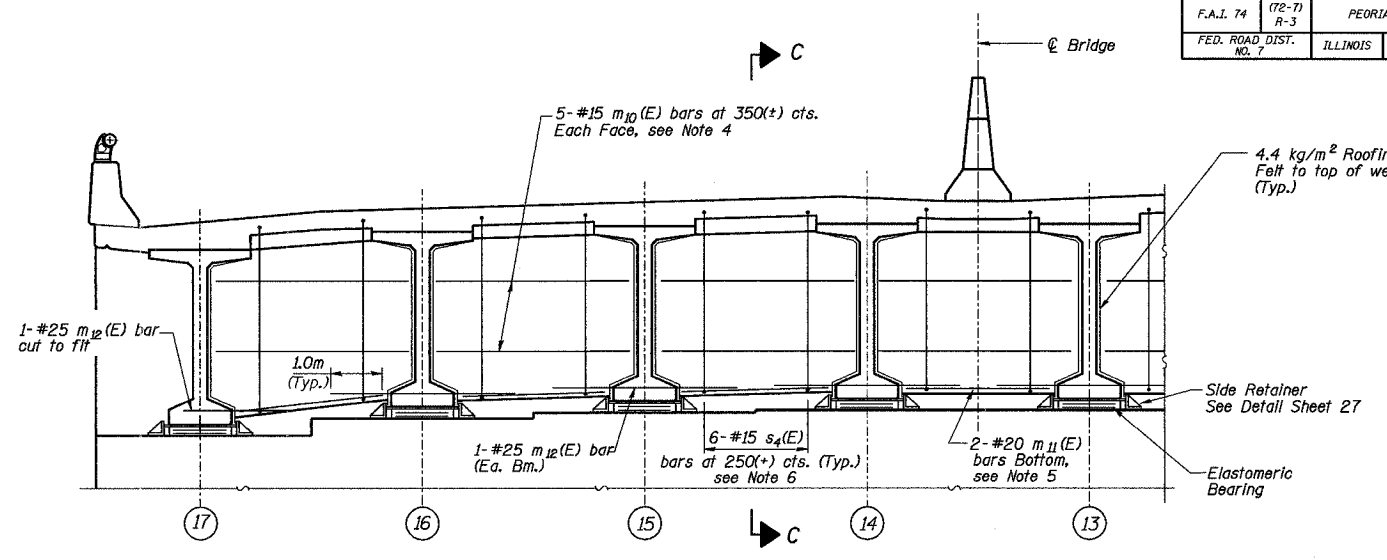


ROUTE NO.	SECT.	COUNTY	SHEET NO.	TOTAL SHEETS
F.A.I. 74	(72-7) R-3	PEORIA	456	1360
FED. ROAD DIST. NO. 7	ILLINOIS	FED. AID PROJECT		

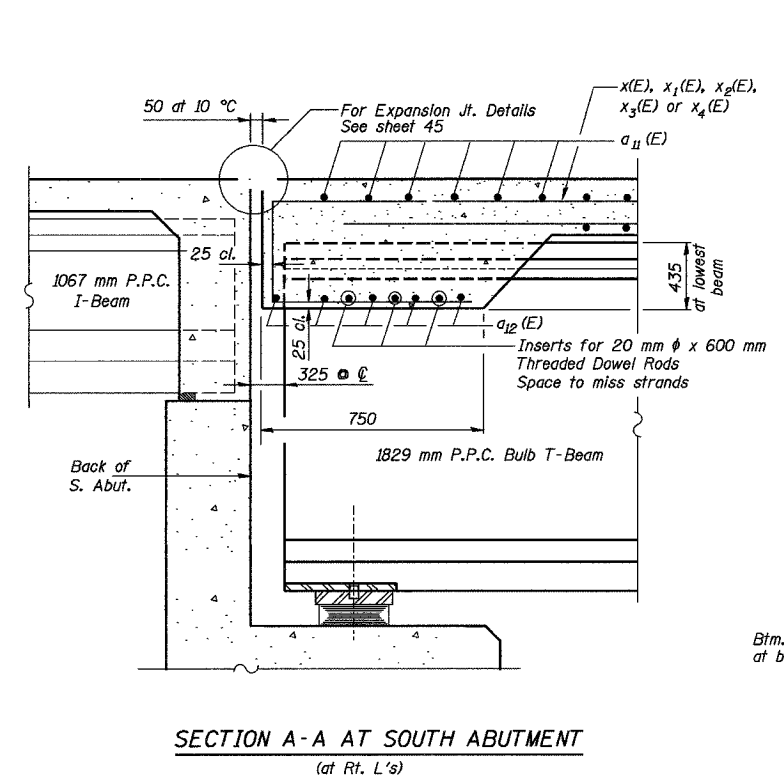
CONTRACT NO. 68200



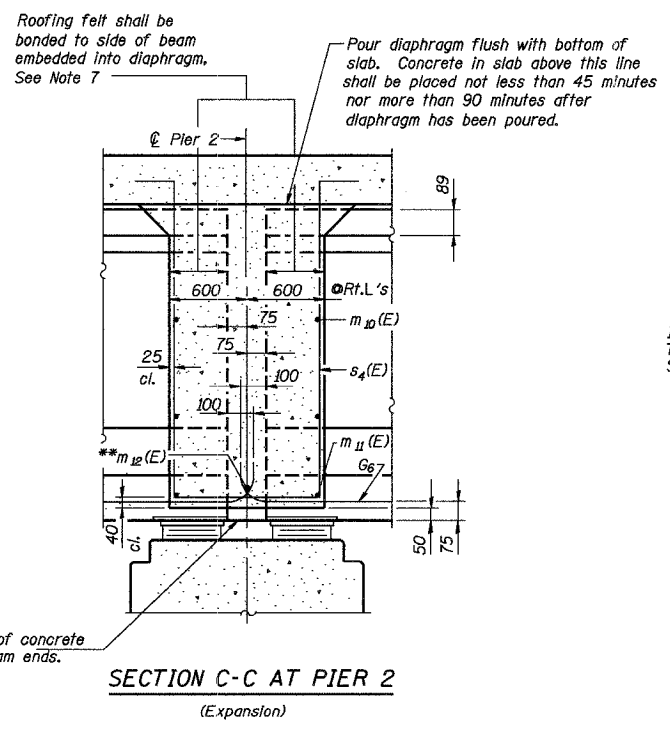
**PARTIAL ELEVATION OF DIAPHRAGM AT ABUTMENT**  
(South Abutment as Shown, North Abutment Similar)



**PARTIAL ELEVATION OF DIAPHRAGM AT PIER 2**  
(Expansion)

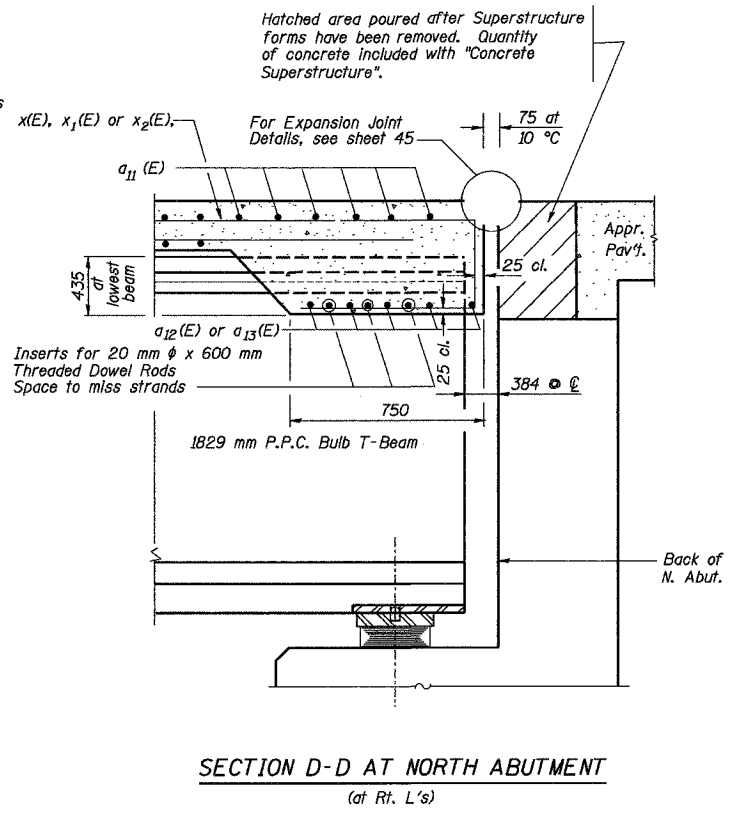


**SECTION A-A AT SOUTH ABUTMENT**  
(at Rt. L's)



**SECTION C-C AT PIER 2**  
(Expansion)

Note: Horizontal dimensions for Sec. C-C are along  $\phi$  of beam unless otherwise noted.  
\*\* Tie #25 m<sub>12</sub>(E) with 3.8 mm wire tightly fastened to prevent any movement between bars.



**SECTION D-D AT NORTH ABUTMENT**  
(at Rt. L's)

- Notes:**
- Reinforcement bars shown on this sheet are included in Bill of Material on Sheet 15.
  - #20 x(E), x<sub>1</sub>(E), x<sub>2</sub>(E), x<sub>3</sub>(E) and x<sub>4</sub>(E) bars are spaced at 150 cts. parallel to traffic.
  - Between Beams 10 and 13 at North Abutment, provide 5-#20 a<sub>13</sub>(E) bars.
  - Between Beams 10 and 11, provide 5-#15 m<sub>13</sub>(E) bars at 350(±) cts., Each Face.
  - Between Beams 10 and 11, provide 2-#20 m<sub>14</sub>(E) bars bottom.
  - 6-#15 s<sub>3</sub>(E) and s<sub>4</sub>(E) bars are parallel to  $\phi$  Beams.
  - Cost of 4.4 kg/m<sup>2</sup> roofing felt is included with "Concrete Superstructure".
  - All dimensions are in millimeters (mm) except as noted.

REVISION	DATE	DESCRIPTION
STATE OF ILLINOIS DEPARTMENT OF TRANSPORTATION		
DIAPHRAGM DETAILS - SPANS 2, 3 & 4		
RAMPS B-1 AND B-4 OVER F.A.I. ROUTE 74 (I-74) RAMPS A-3 AND B-3 F.A.I. ROUTE 74 SECTION (72-7) R-3 PEORIA COUNTY STATION 10+779.03 STRUCTURE NUMBER 072-0183		
PARSONS TRANSPORTATION GROUP CHICAGO, ILLINOIS		
DRAWING NO. 13	SCALE N.T.S.	DATE 2-18-03
		SHEET NO. 13

Designed by: AMK  
Checked by: AK  
Drafted by: JMG  
Checked by: AK

Date: 1/19/2004 Time: 09:59:09 AM File: P:\649996\struc\trac\072-0183\Sheet\1\Tracings\SD00027-1A0720183.dgn