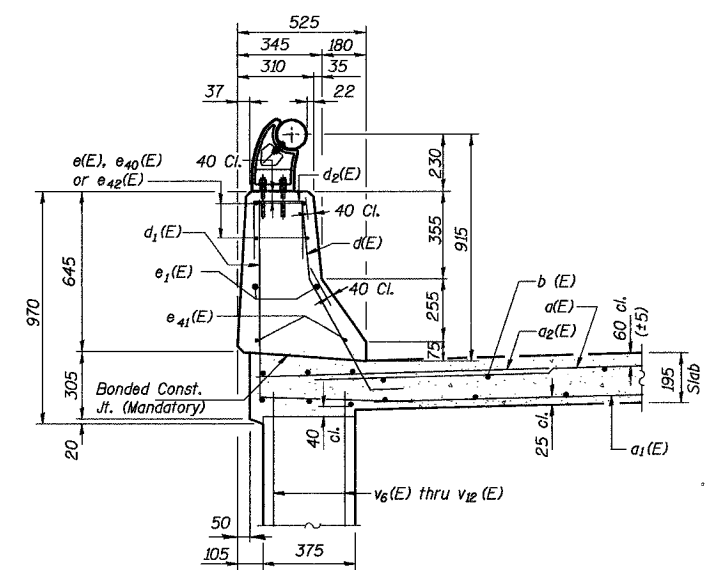


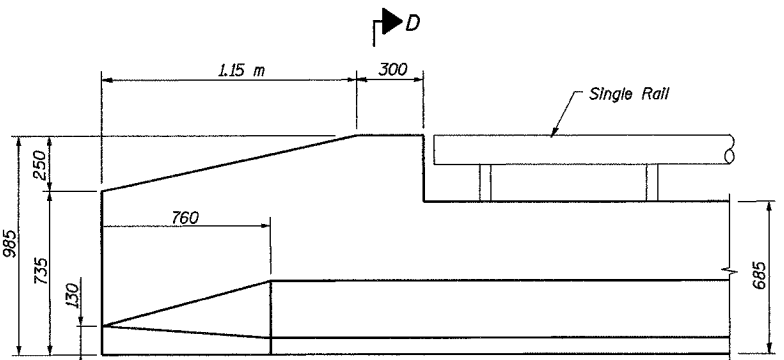
ROUTE NO.	SECT.	COUNTY	SHEET NO.	TOTAL SHEETS
F.A.I. 74	(72-7) R-3	PEORIA	452	1360
FED. ROAD DIST. NO. 7	ILLINOIS	FED. AID PROJECT		

CONTRACT NO. 68200

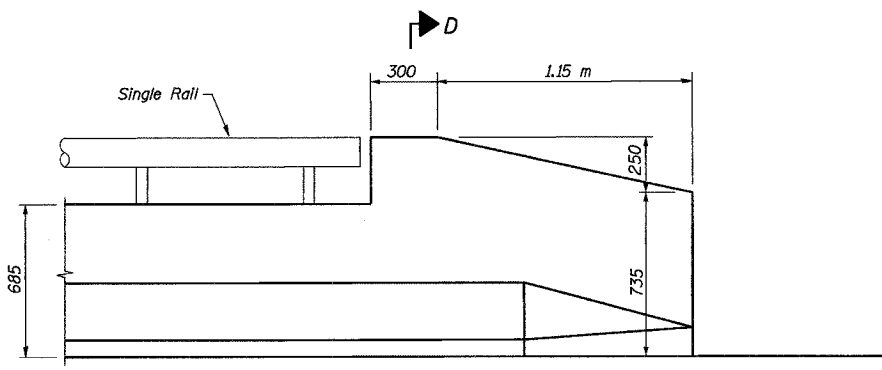
418 Rail Post Spacing



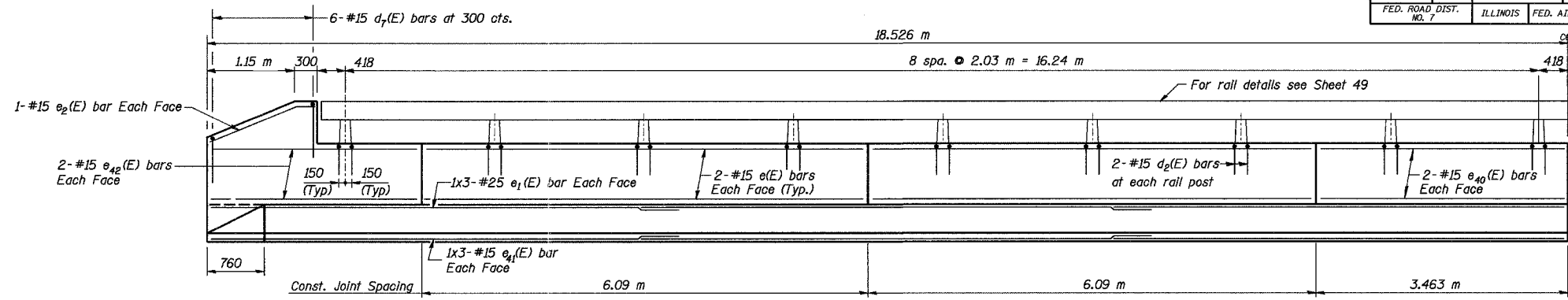
SECTION THRU PARAPET



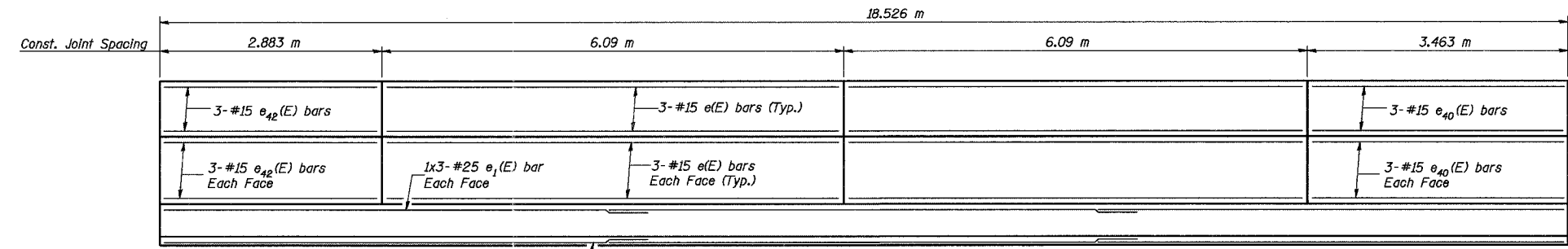
PARAPET END SECTION FOR TERMINAL BARRIER TYPE 6 (Inside View)



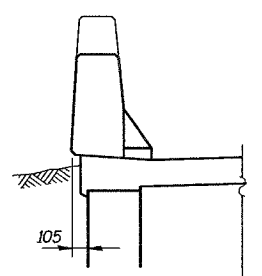
PARAPET END SECTION (Inside View)



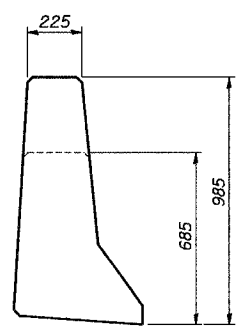
INSIDE ELEVATION OF PARAPET



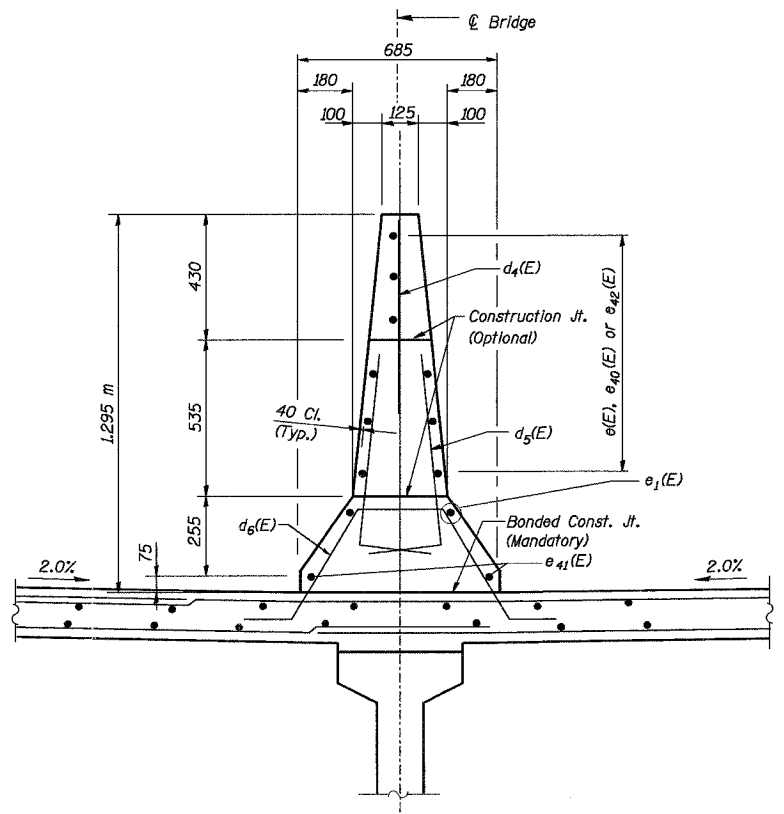
ELEVATION OF MEDIAN



VIEW C-C



SECTION D-D



SECTION THRU MEDIAN

MIN. BAR. LAP

#15 bar = 640
#25 bar = 132 m

Notes:
Parapet shall have a smooth form lined surface on the exterior face.
Slip forming is not allowed.
See Sheet 10 for superstructure details and Bill of Material Reinforcement bars designated (E) shall be epoxy coated.
Bars indicated thus 1x2-#15 etc. indicates 1 line of bars with 2 lengths per line.
See Sheets 31 and 32 for v6(E) thru v12(E) bars.
See sheets 15 & 16 for parapet & median joint details.
All dimensions are in millimeters (mm) except as noted.

REVISION	DATE	DESCRIPTION
STATE OF ILLINOIS DEPARTMENT OF TRANSPORTATION		
PARAPET AND MEDIAN DETAILS - SPAN 1		
RAMPS B-1 AND B-4 OVER F.A.I. ROUTE 74 (I-74) RAMPS A-3 AND B-3 F.A.I. ROUTE 74 SECTION (72-7) R-3 PEORIA COUNTY STATION 10+779.03 STRUCTURE NUMBER 072-0183		
PARSONS TRANSPORTATION GROUP CHICAGO, ILLINOIS		
DRAWING NO. 9	SCALE N.T.S.	DATE 2-18-03
		SHEET NO. 9

Date: 11/19/2004 Time: 10:37:18 AM File name: P:\643995\structure\072-0183\Sheet\Tracings\PS0004-140720183.dgn

Designed by: DL
Checked by: AK
Drafted by: FTE
Checked by: AK