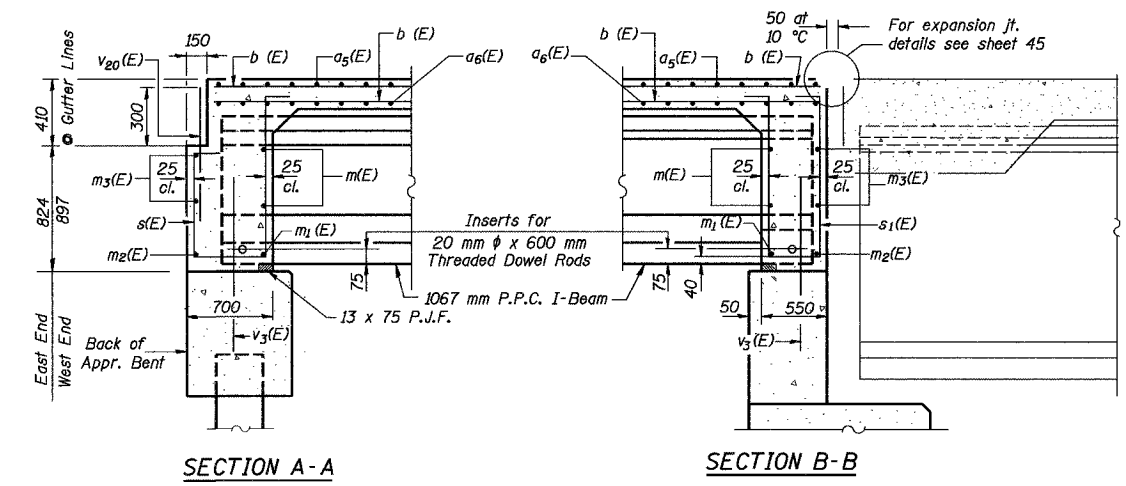
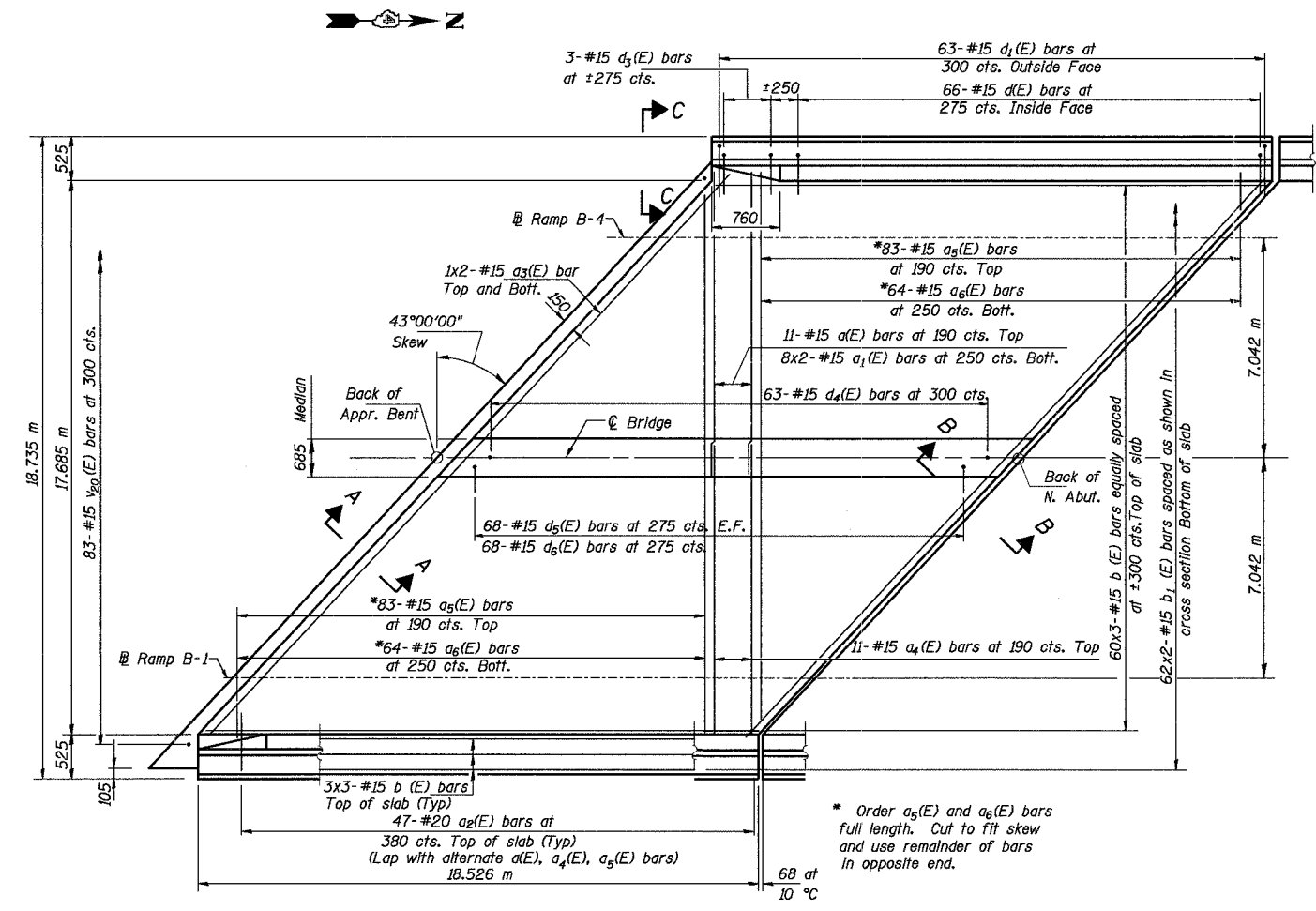


ROUTE NO.	SECT.	COUNTY	SHEET NO.	TOTAL SHEETS
F.A.I. 74	(72-7) R-3	PEORIA	45	1360
FED. ROAD DIST. NO. 7	ILLINOIS	FED. AID PROJECT		

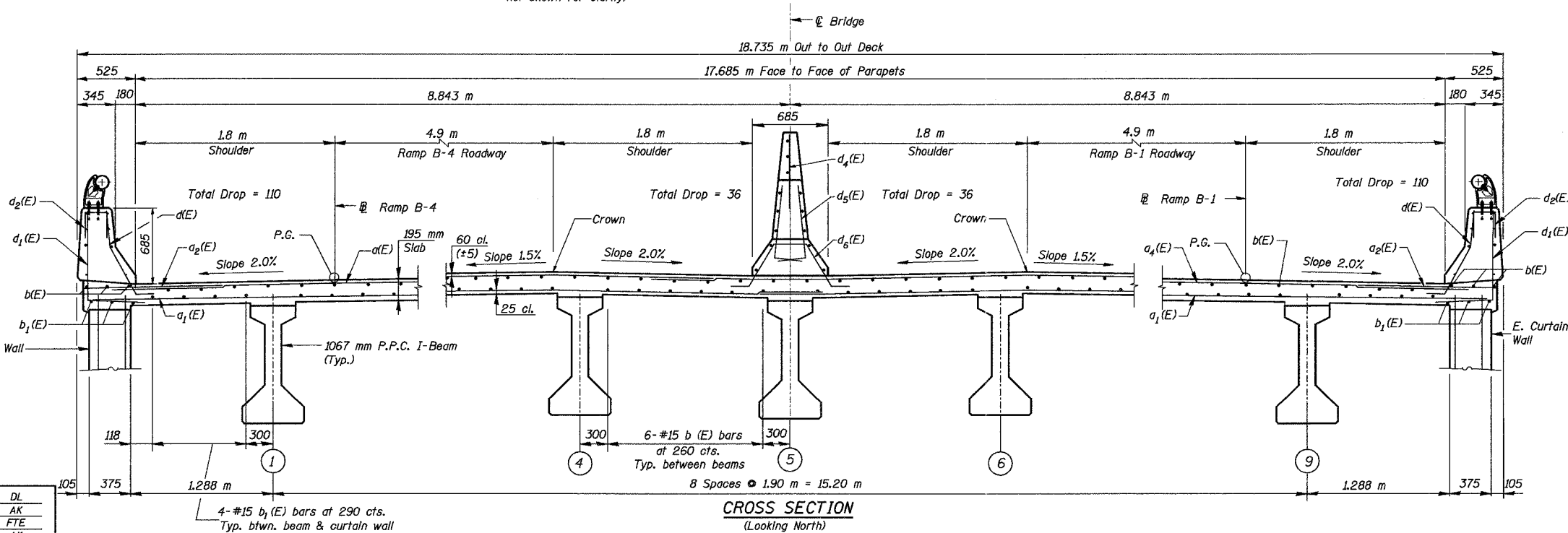
CONTRACT NO. 68200



* Order a₅(E) and a₆(E) bars full length. Cut to fit skew and use remainder of bars in opposite end.

MIN. BAR. LAP
#15 bar = 640

Notes:
 See Sheet 10 for superstructure details and Bill of Material.
 Reinforcement bars designated (E) shall be epoxy coated.
 Bars indicated thus 1x2-#15 etc. indicates 1 line of bars with 2 lengths per line.
 See Sheet 9 for parapet, median reinforcement and view C-C.
 All dimensions are in millimeters (mm) except as noted.
 E.F. = Each Face
 See Sheet 29 for v₃(E) bars.



Designed by: DL
 Checked by: AK
 Drafted by: FTE
 Checked by: AK

REVISION	DATE	DESCRIPTION
STATE OF ILLINOIS DEPARTMENT OF TRANSPORTATION		
DECK PLAN AND CROSS SECTION - SPAN 1		
RAMPS B-1 AND B-4 OVER F.A.I. ROUTE 74 (I-74) RAMPS A-3 AND B-3 F.A.I. ROUTE 74 SECTION (72-7) R-3 PEORIA COUNTY STATION 10+779.03 STRUCTURE NUMBER 072-0183		
PARSONS TRANSPORTATION GROUP CHICAGO, ILLINOIS		
DRAWING NO.	SCALE	DATE
8	N.T.S.	2-18-03
SHEET NO.		
8		