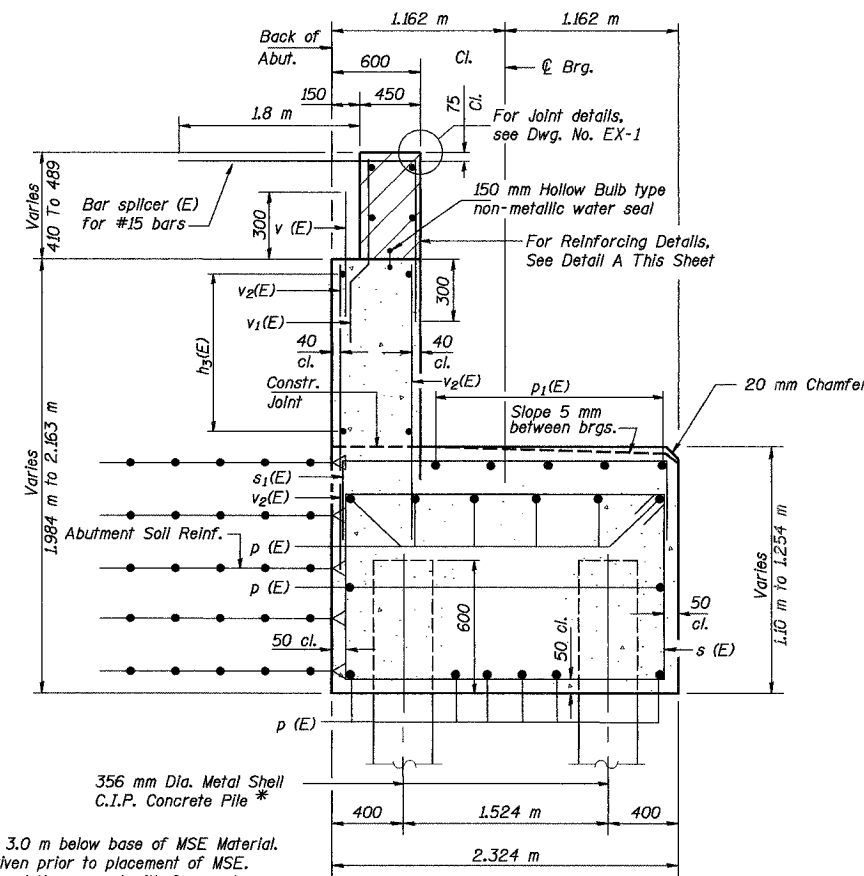
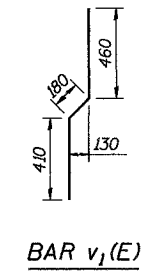
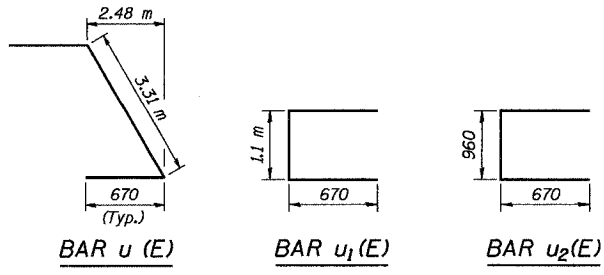
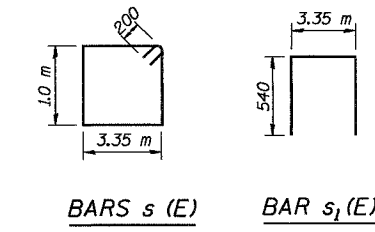
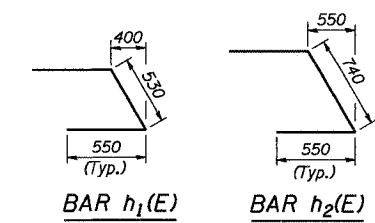


ROUTE NO.	SECT.	COUNTY	SHEET NO.	TOTAL SHEETS
F.A.I. 74	(72-7) R-3	PEORIA	432	1360
FED. ROAD DIST. NO. 7	ILLINOIS	FED. AID PROJECT		

CONTRACT NO. 68200



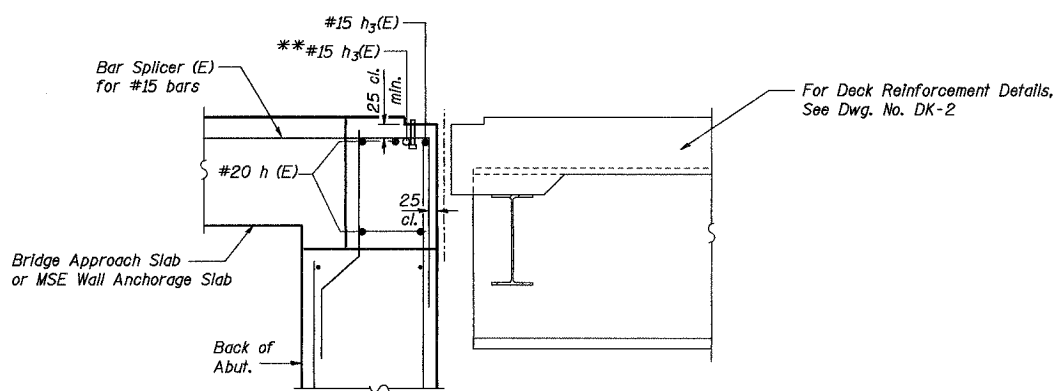
* Precast Piles to 3.0 m below base of MSE Material. Piles must be driven prior to placement of MSE. Coat Piles above existing ground with 6 mm min. thickness of either asphaltic cement or S.C. or M.C. liquid asphalt. (See S.N. 072-8556)



**WEST ABUTMENT
BILL OF MATERIAL**

Bar	No.	Size	Length (m)	Shape
h (E)	4	#20	11.82	
h ₁ (E)	4	#15	1.63	
h ₂ (E)	6	#15	1.84	
h ₃ (E)	7	#15	11.82	
p (E)	14	#25	11.82	
p ₁ (E)	5	#20	8.02	
s (E)	37	#20	9.10	
s ₁ (E)	19	#15	4.43	
u (E)	8	#20	4.65	
u ₁ (E)	8	#20	2.44	
u ₂ (E)	8	#20	2.30	
v (E)	40	#15	0.70	
v ₁ (E)	40	#15	1.05	
v ₂ (E)	80	#15	1.30	
Concrete Structures		m ³	39.6	
Reinforcement Bars, Epoxy Coated		kg	2390	
Bridge Seat Sealer		m ²	21	
Furnishing Metal		m	209	
Pile Shells, 356 mm		m	209	
Driving and Filling Shells		m	209	
Test Pile Metal Shells		Ea.	1	

Notes:
 Work this drawing with Dwg. No. AB-1.
 Reinforcement bars designated (E) shall be epoxy coated.
 Dimensions are in millimeters (mm) unless noted otherwise.



**Place h₃(E) bars in back of anchor bolt as shown, if required to maintain 25 mm cl. (+0-3 mm). Anchor bolts should be tied to h₃(E) bars.

Date: 11/19/2004 Time: 09:21:57 AM File name: P:\643996\struc\ur\A3\072-0172\Sheet\Tracings\AB0002-1\A0720172.dgn

Designed by:	WEE
Checked by:	RW
Drafted by:	RKS
Checked by:	WEE

REVISION	DATE	DESCRIPTION
STATE OF ILLINOIS DEPARTMENT OF TRANSPORTATION		
WEST ABUTMENT DETAILS		
RAMP A-3 OVER RAMP B-5 F.A.I. ROUTE 74 (SECTION 72-7)R-3 PEORIA COUNTY STA. 10+418.515 (RAMP A-3) STRUCTURE NUMBER 072-0172		
PARSONS TRANSPORTATION GROUP CHICAGO, ILLINOIS		
DRAWING NO. AB-2	SCALE N.T.S.	DATE 11/16/04
		SHEET NO. 13