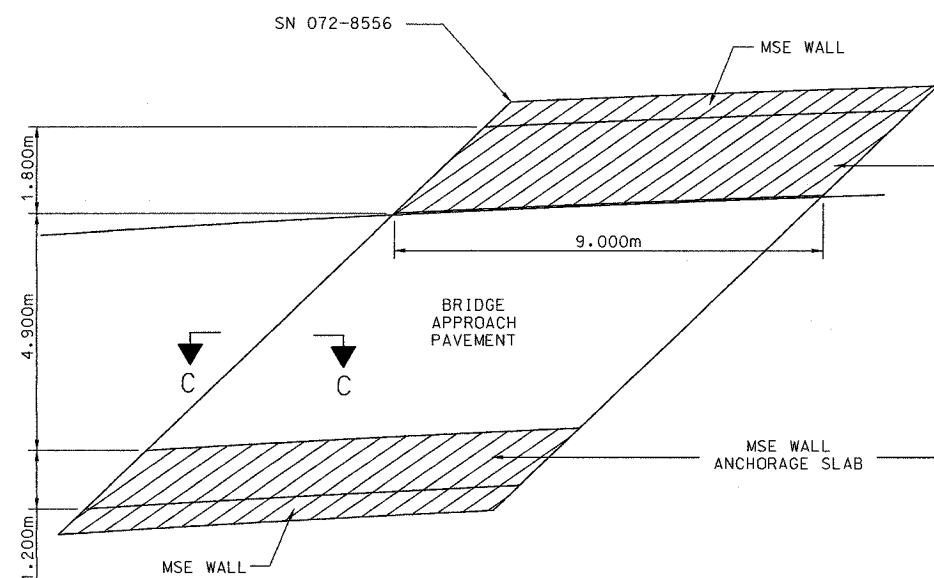
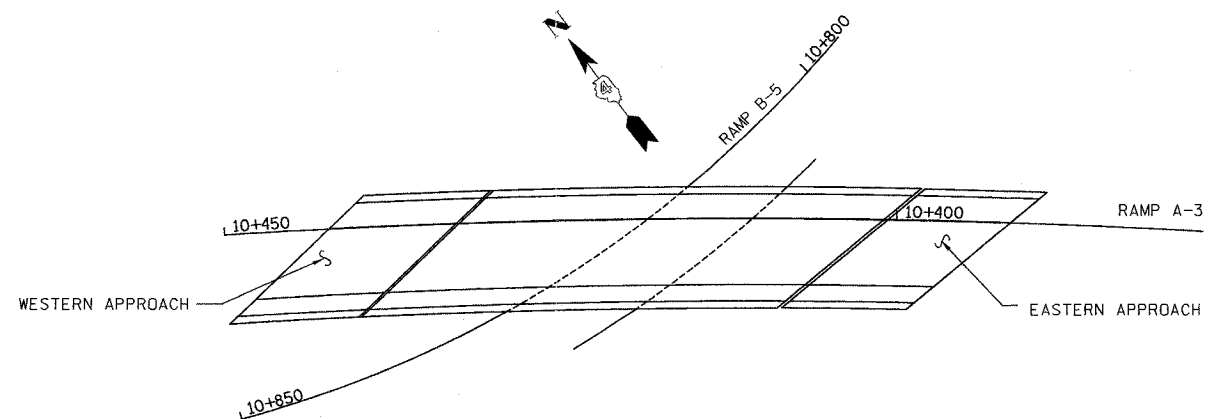
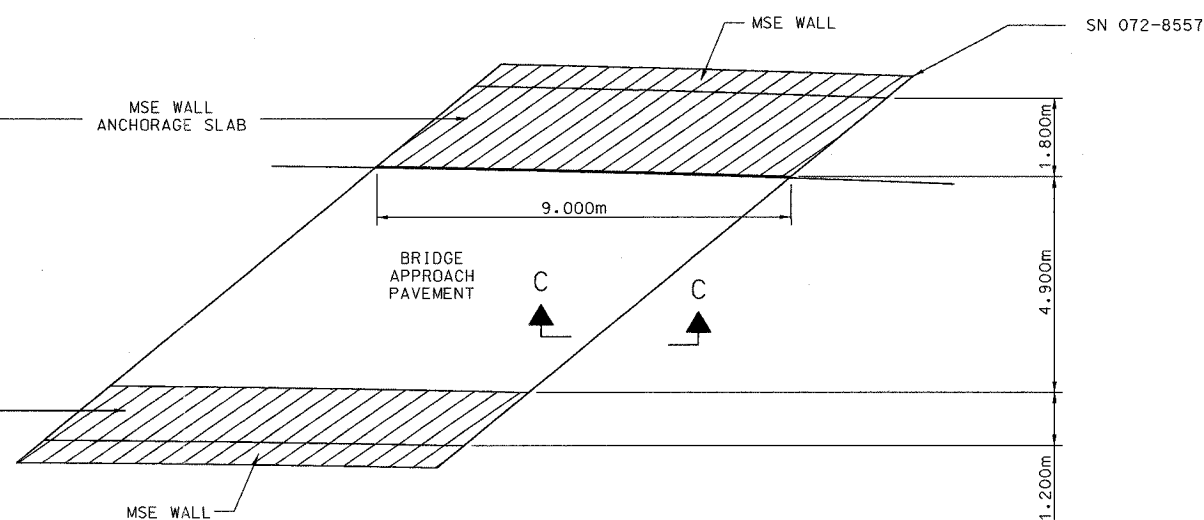


F.A. RTE.	SECTION	COUNTY	TOTAL SHEETS	SHEET NO.
74	(72-71R-3)	PEORIA	1360	416
STA.	TO STA.			
FED. ROAD DIST. NO.	ILLINOIS	FED. AID PROJECT		



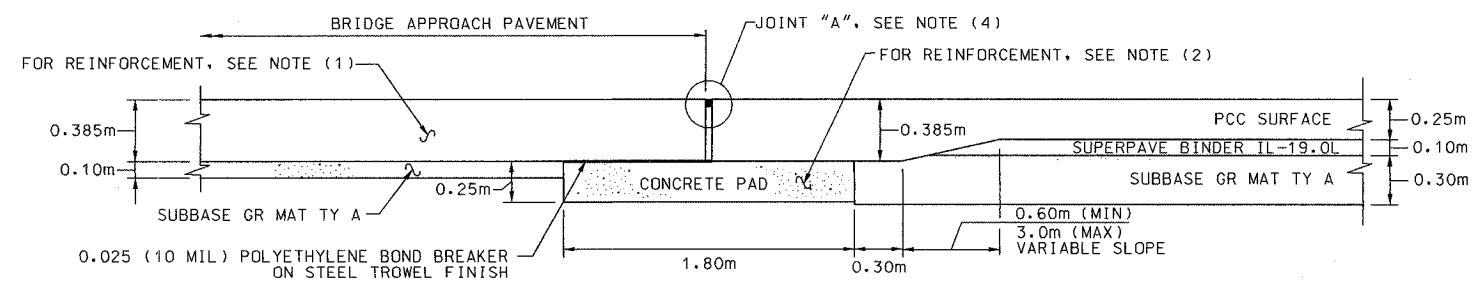
PLAN VIEW
WESTERN APPROACH
NTS



PLAN VIEW
EASTERN APPROACH
NTS

NOTES:

- FOR APPROACH SLAB REINFORCEMENT SEE SHT. 1 & 3 OF STANDARD 420401, "BRIDGE APPROACH PAVEMENT".
- FOR CONCRETE PAD REINFORCEMENT SEE SEC G-G RIGID PAVEMENT OF STANDARD 420401, "BRIDGE APPROACH PAVEMENT".
- REINFORCEMENT BARS DESIGNATED (E) SHALL BE EPOXY COATED.
- FOR JOINT "A" DETAIL, SEE PROJECT STANDARD 420402-174, "DETAIL A".
- COST OF REINFORCEMENT AND FLARED COIL LOOPS SHALL BE INCLUDED IN THE SQUARE METER COST OF BRIDGE APPROACH PAVEMENT.



SECTION C-C
NTS

PAY ITEM CODE	ITEM	UNIT	QUANTITY
M4205050	BRIDGE APPROACH PAVEMENT (SPECIAL)	SQ M	88.2

REVISIONS	
NAME	DATE

ILLINOIS DEPARTMENT OF TRANSPORTATION
BRIDGE APPROACH PAVEMENT
FAI ROUTE 74 (I-74) (WB)
RAMP A-3 OVER RAMP B-5



DRAWN BY CADD
CHECKED BY MWP
DATE 11/12/04