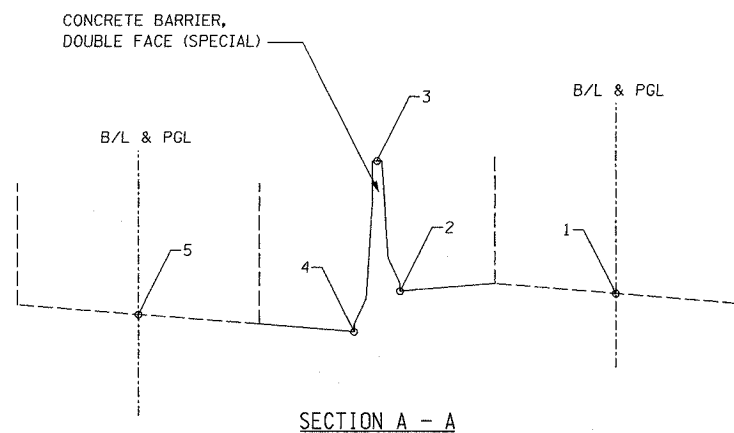
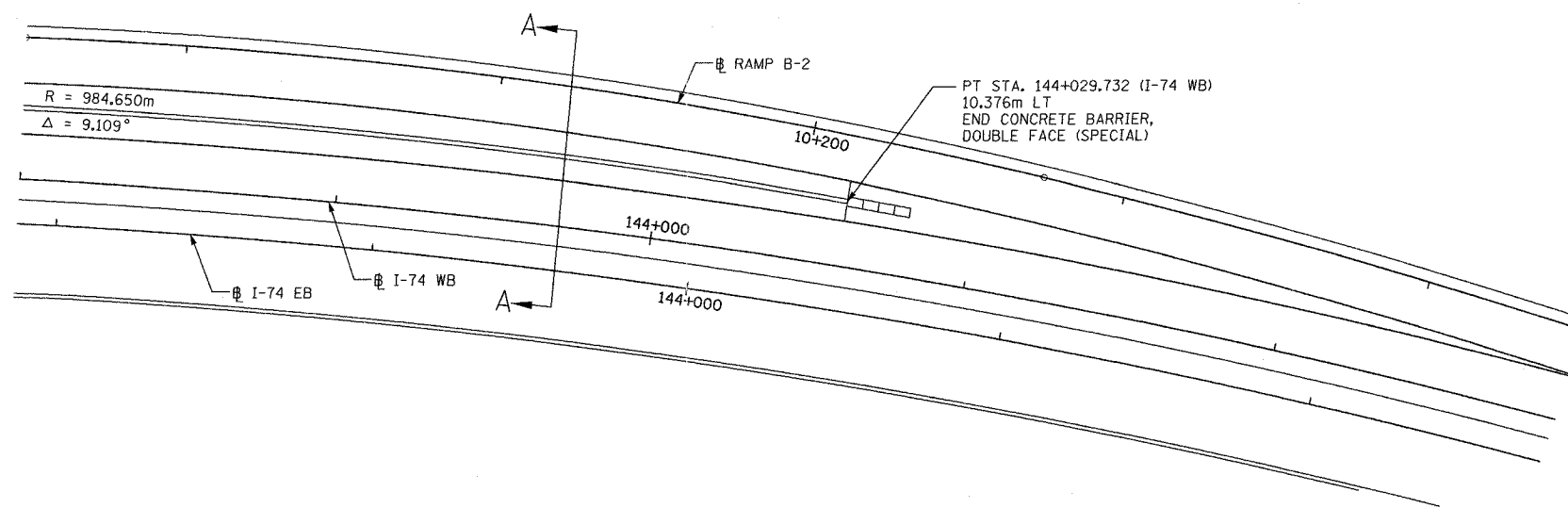
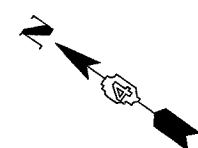
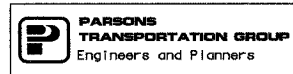
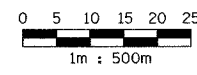


F.A. RTE.	SECTION	COUNTY	TOTAL SHEETS	SHEET NO.
74	(72-7)R-3	PEORIA	1360	413
STA.		TO STA.		
FED. ROAD DIST. NO.		ILLINOIS FED. AID PROJECT		

RAMP B2 STATION	ELEVATIONS					I-74 WB STATION
	1	2	3	4	5	
10+195.000	186.842	186.441	187.744	186.449	186.246	144+027.446
10+200.000	186.901	186.495	187.800	186.505	186.305	144+022.555
10+205.000	186.961	186.552	187.856	186.561	186.364	144+017.665
10+210.000	187.020	186.607	187.912	186.617	186.423	144+012.776
10+215.000	187.080	186.664	187.968	186.673	186.482	144+007.888
10+220.000	187.139	186.719	188.025	186.730	186.541	144+003.001
10+225.000	187.198	186.775	188.082	186.787	186.600	143+998.115
10+230.000	187.258	186.833	188.138	186.843	186.659	143+993.229
10+235.000	187.317	186.889	188.195	186.900	186.718	143+988.345
10+240.000	187.377	186.947	188.252	186.957	186.777	143+983.460
10+245.000	187.436	187.004	188.308	187.013	186.835	143+978.577
10+250.000	187.495	187.062	188.365	187.070	186.893	143+973.693
10+255.000	187.555	187.120	188.420	187.125	186.950	143+968.811
10+260.000	187.614	187.178	188.476	187.181	187.007	143+963.928
10+265.000	187.673	187.236	188.532	187.237	187.064	143+959.046
10+270.000	187.733	187.295	188.590	187.291	187.119	143+954.164
10+275.000	187.792	187.354	188.649	187.345	187.174	143+949.282
10+280.000	187.852	187.414	188.709	187.399	187.229	143+944.401
10+285.000	187.911	187.473	188.768	187.453	187.283	143+939.519
10+290.000	187.970	187.532	188.827	187.506	187.337	143+934.638
10+295.000	188.030	187.592	188.887	187.559	187.390	143+929.757
10+300.000	188.089	187.652	188.947	187.611	187.442	143+924.875
10+305.000	188.149	187.713	189.008	187.663	187.494	143+919.993
10+310.000	188.208	187.773	189.068	187.715	187.546	143+915.111
10+315.000	188.267	187.833	189.128	187.767	187.597	143+910.229
10+320.000	188.327	187.893	189.188	187.817	187.647	143+905.346
10+325.000	188.386	187.953	189.248	187.868	187.697	143+900.463



- NOTES:
- BARRIER BASE WIDTH EQUALS 0.685m, UNLESS OTHERWISE NOTED
 - BARRIER HEIGHT EQUALS 1.295m ON HIGH SIDE OF SHOULDER. ON LOW SIDE OF SHOULDER, HEIGHT EQUALS DIFFERENCE BETWEEN SHOULDER ELEVATION AND TOP OF BARRIER ELEVATION.
 - BARRIER ON LOW SIDE OF SHOULDER RETAINS GM-SHAPE TO 1.295m HIGH THEN PROVIDES VERTICAL FACE TO ACHIEVE REQUIRED HEIGHT. SEE CONCRETE BARRIER, DOUBLE FACE (SPECIAL) DETAILS.



REVISIONS	
NAME	DATE

ILLINOIS DEPARTMENT OF TRANSPORTATION
 CONCRETE BARRIER ELEVATIONS
 FAI ROUTE 74 (I-74) (WB)
 RAMP A-3, B-2, B-3
 DRAWN BY CADD
 CHECKED BY MWP
 DATE 11/12/04