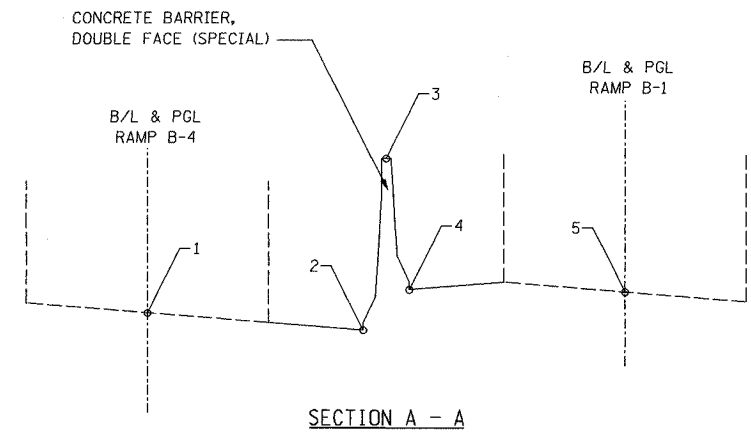
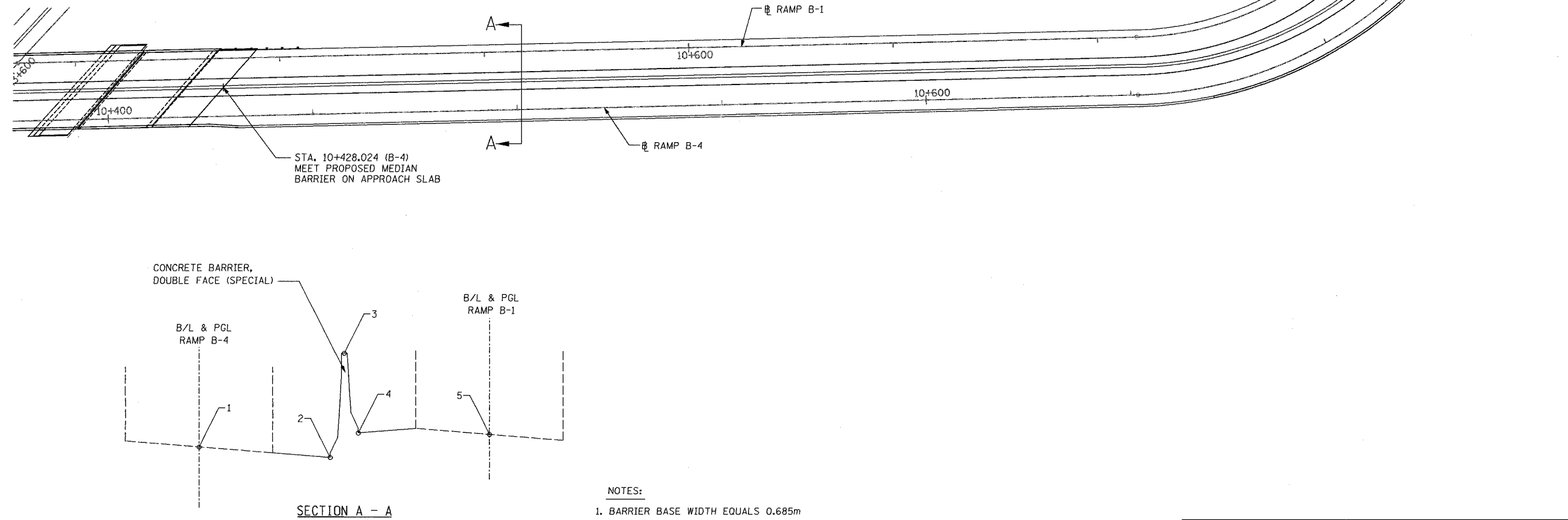
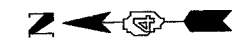


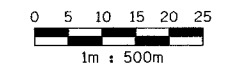
F.A. RTE.	SECTION	COUNTY	TOTAL SHEETS	SHEET NO.
74	(72-7)R-3	PEORIA	1300	411
STA.		TO STA.		
FED. ROAD DIST. NO.		ILLINOIS	FED. AID PROJECT	

RAMP B4 STATION	ELEVATIONS					RAMP B1 STATION
	1	2	3	4	5	
10+430.000	196.528	196.530	197.825	196.530	196.528	10+712.224
10+435.000	196.371	196.373	197.669	196.374	196.372	10+707.224
10+440.000	196.215	196.217	197.513	196.218	196.216	10+702.224
10+445.000	196.059	196.061	197.357	196.062	196.060	10+697.224
10+450.000	195.903	195.905	197.200	195.905	195.903	10+692.224
10+455.000	195.747	195.749	197.044	195.749	195.747	10+687.224
10+460.000	195.591	195.593	196.888	195.593	195.591	10+682.224
10+465.000	195.435	195.437	196.732	195.437	195.435	10+677.224
10+470.000	195.279	195.281	196.576	195.281	195.279	10+672.224
10+475.000	195.122	195.124	196.420	195.125	195.123	10+667.224
10+480.000	194.966	194.968	196.264	194.969	194.967	10+662.224
10+485.000	194.810	194.812	196.108	194.813	194.811	10+657.224
10+490.000	194.654	194.656	195.952	194.657	194.655	10+652.224
10+495.000	194.498	194.500	195.795	194.500	194.498	10+647.224
10+500.000	194.342	194.344	195.639	194.344	194.342	10+642.224
10+505.000	194.186	194.188	195.483	194.188	194.186	10+637.224
10+510.000	194.030	194.032	195.327	194.032	194.030	10+632.224
10+515.000	193.873	193.875	195.171	193.876	193.874	10+627.224
10+520.000	193.717	193.719	195.015	193.720	193.718	10+622.224
10+525.000	193.561	193.563	194.859	193.564	193.562	10+617.224
10+530.000	193.405	193.407	194.703	193.408	193.406	10+612.224
10+535.000	193.249	193.251	194.547	193.252	193.250	10+607.224
10+540.000	193.093	193.095	194.390	193.095	193.093	10+602.224
10+545.000	192.937	192.939	194.234	192.939	192.937	10+597.224
10+550.000	192.781	192.783	194.078	192.783	192.781	10+592.224
10+555.000	192.628	192.630	193.925	192.627	192.625	10+587.224
10+560.000	192.482	192.484	193.779	192.471	192.469	10+582.224
10+565.000	192.342	192.344	193.639	192.315	192.313	10+577.224
10+570.000	192.210	192.212	193.507	192.159	192.157	10+572.224
10+575.000	192.084	192.086	193.381	192.003	192.001	10+567.224
10+580.000	191.965	191.967	193.262	191.851	191.849	10+562.224
10+585.000	191.852	191.854	193.149	191.701	191.699	10+557.224
10+590.000	191.746	191.748	193.043	191.555	191.553	10+552.224
10+595.000	191.647	191.649	192.944	191.412	191.410	10+547.224
10+600.000	191.555	191.557	192.852	191.273	191.271	10+542.224
10+605.000	191.466	191.468	192.763	191.136	191.134	10+537.224

RAMP B4 STATION	ELEVATIONS					RAMP B1 STATION
	1	2	3	4	5	
10+610.000	191.377	191.352	192.647	191.003	191.001	10+532.224
10+615.000	191.288	191.230	192.525	190.873	190.871	10+527.224
10+620.000	191.199	191.146	192.441	190.743	190.741	10+522.224
10+625.000	191.110	190.984	192.279	190.642	190.641	10+517.224
10+630.000	191.021	190.866	192.161	190.546	190.481	10+512.224
10+635.000	190.932	190.742	192.037	190.451	190.351	10+507.224
10+640.000	190.843	190.619	191.914	190.358	190.221	10+502.224
10+645.000	190.754	190.496	191.791	190.275	190.091	10+497.224
10+650.000	190.665	190.370	191.665	190.186	189.961	10+492.224
10+655.000	190.576	190.234	191.529	190.108	189.843	10+487.713
10+660.000	190.487	190.098	191.393	190.038	189.733	10+483.472
10+665.000	190.398	189.963	191.263	189.968	189.623	10+479.232
10+670.000	190.309	189.833	191.200	189.905	189.513	10+474.997
10+675.000	190.220	189.697	191.090	189.795	189.403	10+470.767
10+680.000	190.131	189.608	190.980	189.685	189.293	10+466.542
10+685.000	190.041	189.518	190.870	189.575	189.183	10+462.326
10+690.000	189.952	189.429	190.761	189.466	189.074	10+458.118
10+695.000	189.863	189.340	190.652	189.357	188.965	10+453.920
10+700.000	189.774	189.251	190.546	189.248	188.856	10+449.733
10+705.000	189.685	189.162	190.457	189.139	188.747	10+445.559
10+710.000	189.596	189.073	190.368	189.031	188.639	10+441.397
10+715.000	189.507	188.984	190.279	188.923	188.531	10+437.250
10+720.000	189.418	188.895	190.190	188.816	188.454	10+433.118
10+725.000	189.329	188.806	190.101	188.709	188.317	10+429.001
10+730.000	189.240	188.717	190.012	188.602	188.210	10+424.900
10+735.000	189.151	188.628	189.923	188.496	188.104	10+420.817
10+740.000	189.062	188.539	189.834	188.390	187.998	10+416.751
10+745.000	188.973	188.450	189.745	188.285	187.893	10+412.703
10+750.000	188.884	188.361	189.656	188.180	187.788	10+408.674
10+755.000	188.795	188.272	189.567	188.113	187.684	10+404.663
10+760.000	188.706	188.230	189.525	188.047	187.580	10+400.671
10+765.000	188.617	188.188	189.483	187.981	187.477	10+396.698
10+770.000	188.528	188.139	189.434	187.915	187.374	10+392.744
10+775.000	188.439	188.097	189.392	187.850	187.272	10+388.810
10+780.000	188.350	188.055	189.350	187.785	187.170	10+384.894
10+785.000	188.261	188.003	189.298	187.715	187.061	10+380.710



- NOTES:
1. BARRIER BASE WIDTH EQUALS 0.685m
  2. BARRIER HEIGHT EQUALS 1.295m ON HIGH SIDE OF SHOULDER. ON LOW SIDE OF SHOULDER, HEIGHT EQUALS DIFFERENCE BETWEEN SHOULDER ELEVATION AND TOP OF BARRIER ELEVATION.
  3. BARRIER ON LOW SIDE OF SHOULDER RETAINS GM-SHAPE TO 1.295m HIGH THEN PROVIDES VERTICAL FACE TO ACHIEVE REQUIRED HEIGHT. SEE CONCRETE BARRIER, DOUBLE FACE (SPECIAL) DETAILS.



**PARSONS**  
TRANSPORTATION GROUP  
Engineers and Planners

REVISIONS	
NAME	DATE

ILLINOIS DEPARTMENT OF TRANSPORTATION  
CONCRETE BARRIER ELEVATIONS  
FAI ROUTE 74 (I-74) (WB)  
RAMP B-4, B-1  
DRAWN BY CADD  
CHECKED BY MWP  
DATE 11/12/04