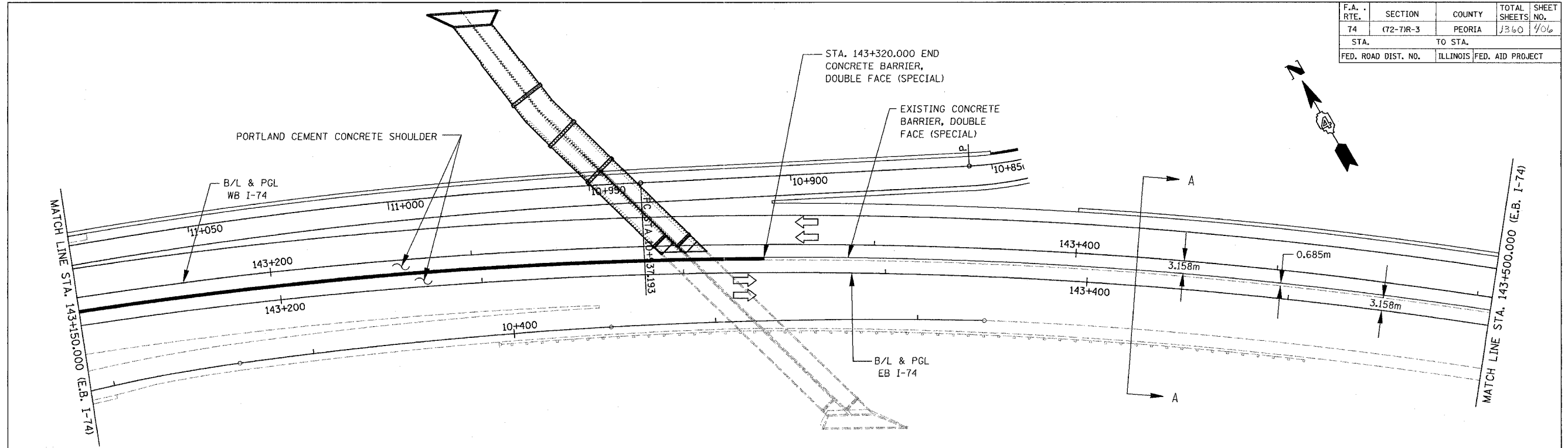
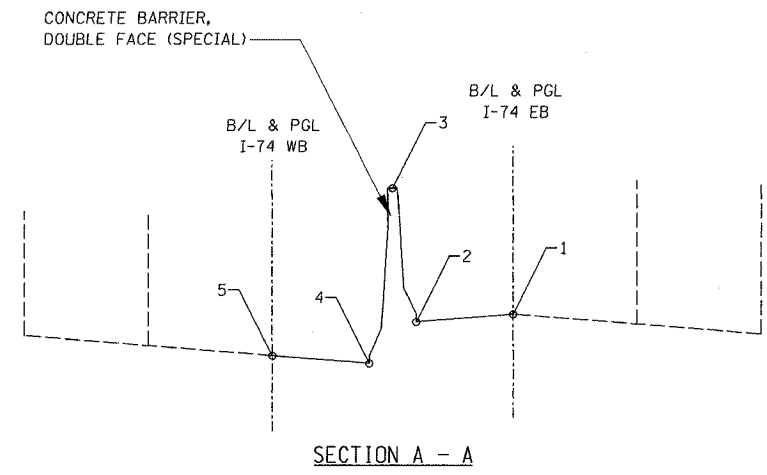


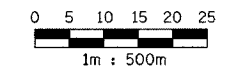
F.A. RTE.	SECTION	COUNTY	TOTAL SHEETS	SHEET NO.
74	72-71R-3	PEORIA	1360	406
STA.		TO STA.		
FED. ROAD DIST. NO.		ILLINOIS	FED. AID PROJECT	



I-74 WB STATION	ELEVATIONS					I-74 EB STATION
	5	4	3	2	1	
143+151.635	194.705	194.570	195.899	194.604	194.720	143+150.000
143+156.665	194.658	194.523	195.852	194.557	194.674	143+155.000
143+161.695	194.611	194.476	195.805	194.510	194.627	143+160.000
143+166.725	194.564	194.429	195.759	194.464	194.580	143+165.000
143+171.756	194.517	194.382	195.712	194.417	194.534	143+170.000
143+176.786	194.470	194.335	195.665	194.370	194.487	143+175.000
143+181.816	194.424	194.288	195.618	194.323	194.440	143+180.000
143+186.846	194.377	194.241	195.572	194.277	194.394	143+185.000
143+191.876	194.330	194.194	195.525	194.230	194.347	143+190.000
143+196.906	194.283	194.147	195.478	194.183	194.300	143+195.000
143+201.936	194.236	194.100	195.432	194.137	194.253	143+200.000
143+206.966	194.189	194.053	195.385	194.090	194.207	143+205.000
143+211.996	194.142	194.006	195.338	194.043	194.160	143+210.000
143+217.026	194.095	193.959	195.292	193.997	194.113	143+215.000
143+222.056	194.048	193.912	195.245	193.950	194.067	143+220.000
143+227.086	194.001	193.865	195.198	193.903	194.020	143+225.000
143+232.116	193.954	193.818	195.151	193.856	193.973	143+230.000
143+237.146	193.907	193.771	195.105	193.810	193.927	143+235.000
143+242.176	193.860	193.724	195.058	193.763	193.880	143+240.000
143+247.206	193.813	193.677	195.011	193.716	193.833	143+245.000
143+252.236	193.766	193.630	194.965	193.670	193.786	143+250.000
143+257.266	193.719	193.583	194.918	193.623	193.740	143+255.000
143+262.296	193.672	193.536	194.871	193.576	193.693	143+260.000
143+267.326	193.625	193.489	194.825	193.530	193.646	143+265.000
143+272.356	193.578	193.442	194.778	193.483	193.600	143+270.000
143+277.386	193.531	193.395	194.731	193.436	193.553	143+275.000
143+282.416	193.484	193.348	194.684	193.389	193.506	143+280.000
143+287.447	193.437	193.301	194.638	193.343	193.460	143+285.000
143+292.477	193.390	193.254	194.591	193.296	193.413	143+290.000
143+297.507	193.343	193.207	194.544	193.249	193.366	143+295.000
143+302.537	193.296	193.160	194.498	193.203	193.319	143+300.000
143+307.567	193.249	193.113	194.451	193.156	193.273	143+305.000
143+312.597	193.202	193.066	194.404	193.109	193.226	143+310.000
143+317.627	193.155	193.019	194.358	193.063	193.179	143+315.000
143+322.657	193.108	192.972	194.311	193.016	193.133	143+320.000



- NOTES:
1. BARRIER BASE WIDTH EQUALS 0.685m
 2. BARRIER HEIGHT EQUALS 1.295m ON HIGH SIDE OF SHOULDER. ON LOW SIDE OF SHOULDER, HEIGHT EQUALS DIFFERENCE BETWEEN SHOULDER ELEVATION AND TOP OF BARRIER ELEVATION.
 3. BARRIER ON LOW SIDE OF SHOULDER RETAINS GM-SHAPE TO 1.295m HIGH THEN PROVIDES VERTICAL FACE TO ACHIEVE REQUIRED HEIGHT SEE CONCRETE BARRIER, DOUBLE FACE (SPECIAL) DETAIL.



REVISIONS		ILLINOIS DEPARTMENT OF TRANSPORTATION CONCRETE BARRIER ELEVATIONS FAI ROUTE 74 (I-74) (WB) STA. 143+150.000 - STA. 143+500.000 DATE 11/12/04
NAME	DATE	

