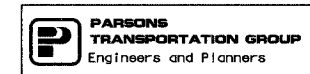
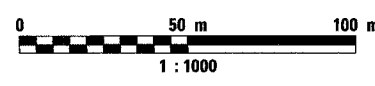
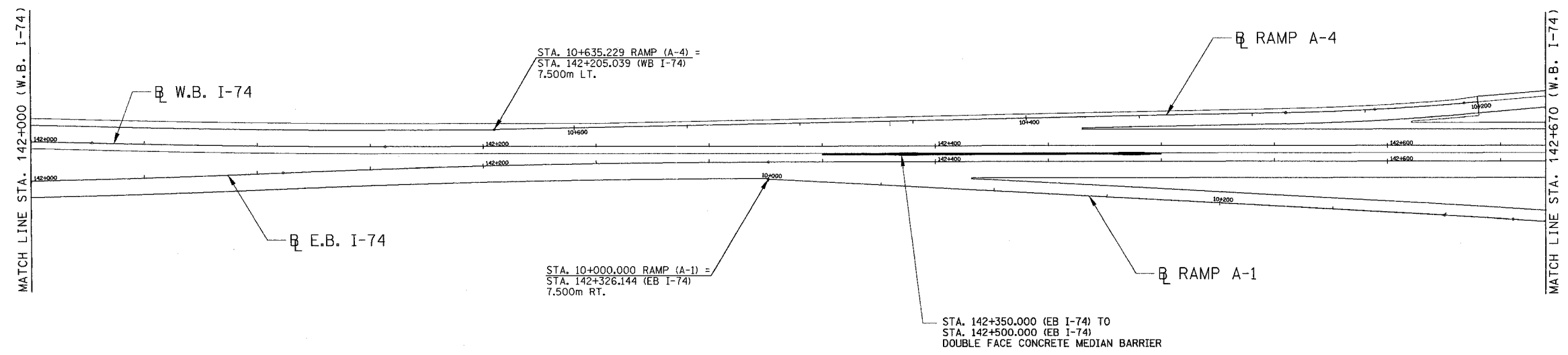


F.A. RTE.	SECTION	COUNTY	TOTAL SHEETS	SHEET NO.
74	(72-7)R-3	PEORIA	1300	400
STA. 142+000.000 TO STA. 142+670.000				
FED. ROAD DIST. NO.		ILLINOIS FED. AID PROJECT		



REVISIONS	
NAME	DATE

ILLINOIS DEPARTMENT OF TRANSPORTATION
CONCRETE BARRIER SCHEMATIC
 FAI ROUTE 74 (I-74) (WB)
 STA. 142+000 TO STA. 142+670
 DRAWN BY CADD
 CHECKED BY MWP
 DATE 11/12/04