

F.A. RTE.	SECTION	COUNTY	TOTAL SHEETS	SHEET NO.
74	(72-71R-3)	PEORIA	1360	353
STA. 143+000.000 TO STA. 143+300.000				
FED. ROAD DIST. NO.		ILLINOIS FED. AID PROJECT		

**PAVEMENT MARKING LEGEND**

- (1X) 100 (4) SOLID
- (2X) 150 (6) SOLID
- (3X) 200 (8) SOLID
- (4X) 300 (12) SOLID
- (5X) 600 (24) SOLID
- (6X) 100 (4) DOUBLE SOLID
- (7X) 100 (4) SKIP DASH
- (8X) 150 (6) SKIP DASH
- (9X) 200 (8) SKIP DASH
- (10X) 200 (8) DOTTED
- (11X) LETTERS AND ARROWS

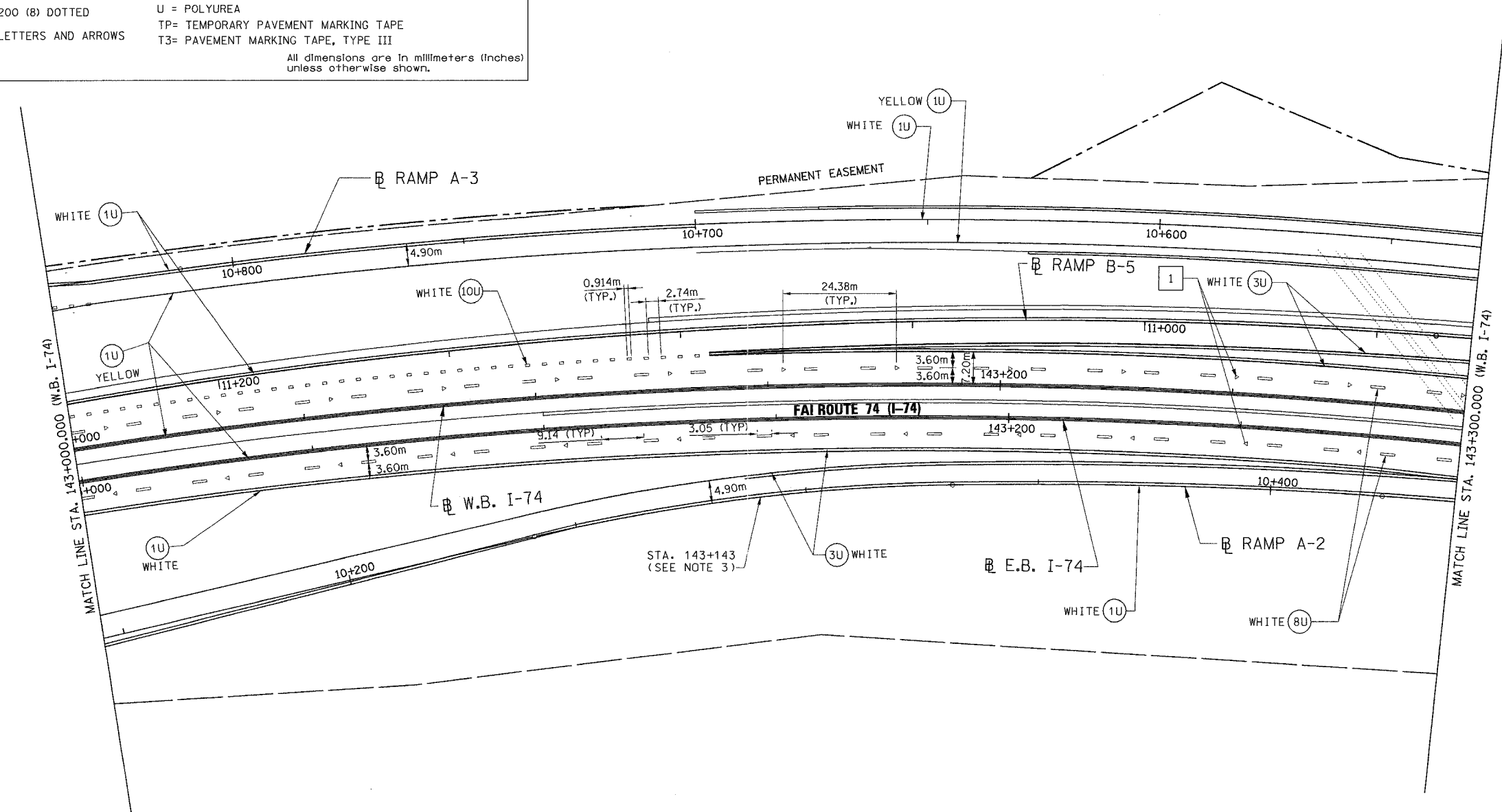
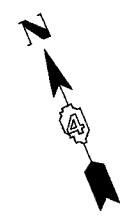
**RAISED REFLECTIVE PAVEMENT MARKERS**

- 1 < ONE-WAY CRYSTAL MARKER AT 24.38 m(80') CENTERS
- 2 < ONE-WAY CRYSTAL MARKER AT 12.19 m(40') CENTERS
- 3 < ONE-WAY CRYSTAL MARKER AT 6.10 m(20') CENTERS
- 4 < ONE-WAY AMBER MARKER AT 12.19 m(40') CENTERS
- 5 < TWO-WAY AMBER MARKER AT 12.19 m(40') CENTERS FOR SPEEDS LESS THAN 45 MPH
- 6 < TWO-WAY AMBER MARKER AT 24.38 m(80') CENTERS FOR SPEEDS GREATER THAN 45 MPH

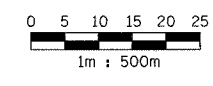
WHERE "X" DESIGNATES:

E = EPOXY	— WHITE
P = PAINT	— YELLOW
T = THERMOPLASTIC	
U = POLYUREA	
TP= TEMPORARY PAVEMENT MARKING TAPE	
T3= PAVEMENT MARKING TAPE, TYPE III	

All dimensions are in millimeters (inches) unless otherwise shown.



- NOTE:**
1. ALL DIMENSIONS ARE IN METERS UNLESS OTHERWISE SHOWN.
  2. LANE DIMENSIONS ARE TO CENTER OF PAVEMENT MARKING.
  3. MAINTAIN EXISTING LANE LINES FOR RAMP A-2 TO STA. 143+143.000.



**PARSONS TRANSPORTATION GROUP**  
Engineers and Planners

REVISIONS	
NAME	DATE

ILLINOIS DEPARTMENT OF TRANSPORTATION  
**PAVEMENT MARKING PLAN**  
 FAI ROUTE 74 (I-74) (WB)  
 STA. 143+000.000 - STA. 143+300.000

DATE 11/12/04

DRAWN BY CADD  
 CHECKED BY KJW