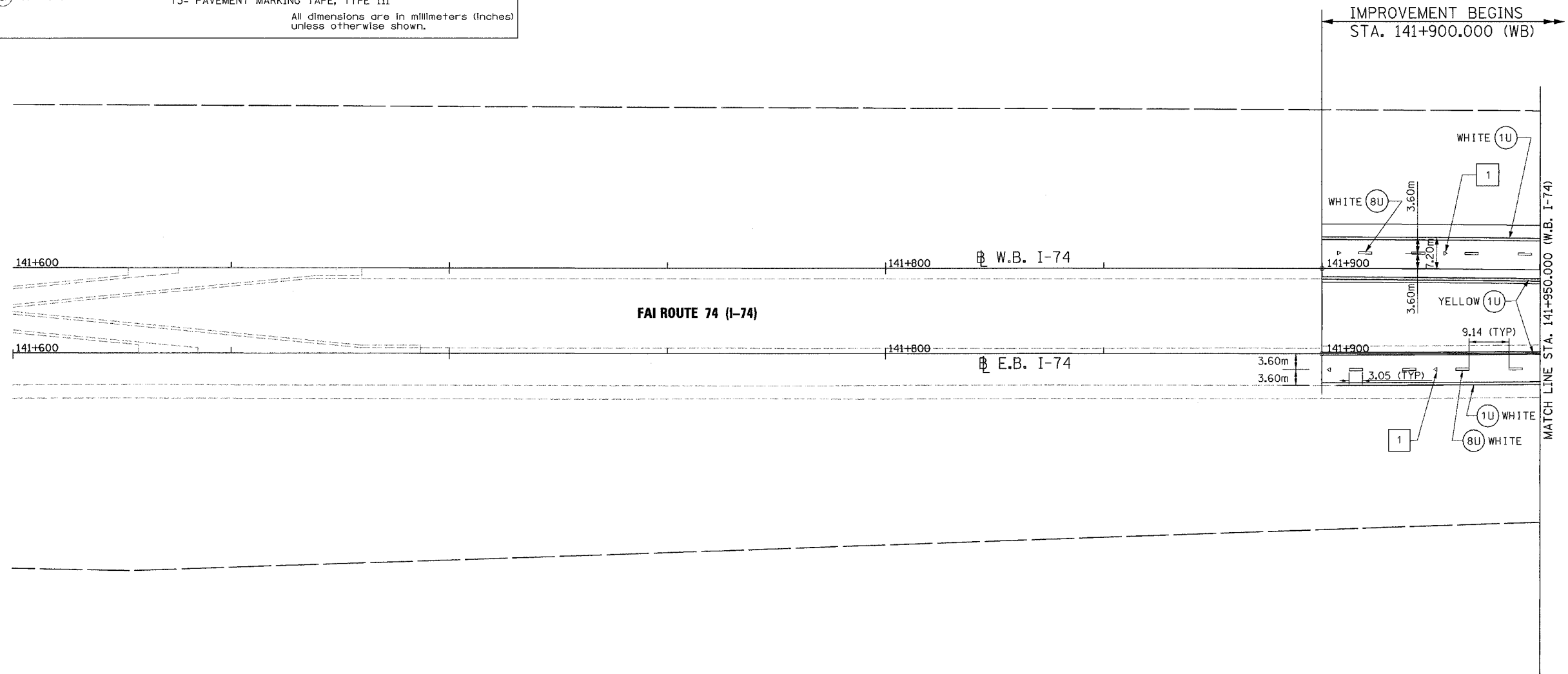


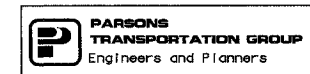
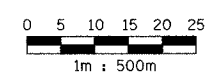
F.A. RTE.	SECTION	COUNTY	TOTAL SHEETS	SHEET NO.
74	(72-71R-3)	PEORIA	1360	349
STA. 141+600.000		TO STA. 141+950.000		
FED. ROAD DIST. NO.		ILLINOIS FED. AID PROJECT		



PAVEMENT MARKING LEGEND		RAISED REFLECTIVE PAVEMENT MARKERS	
(1X) 100 (4) SOLID		1	ONE-WAY CRYSTAL MARKER AT 24.38 m(80') CENTERS
(2X) 150 (6) SOLID		2	ONE-WAY CRYSTAL MARKER AT 12.19 m(40') CENTERS
(3X) 200 (8) SOLID		3	ONE-WAY CRYSTAL MARKER AT 6.10 m(20') CENTERS
(4X) 300 (12) SOLID		4	ONE-WAY AMBER MARKER AT 12.19 m(40') CENTERS
(5X) 600 (24) SOLID		5	TWO-WAY AMBER MARKER AT 12.19 m(40') CENTERS FOR SPEEDS LESS THAN 45 MPH
(6X) 100 (4) DOUBLE SOLID		6	TWO-WAY AMBER MARKER AT 24.38 m(80') CENTERS FOR SPEEDS GREATER THAN 45 MPH
(7X) 100 (4) SKIP DASH		WHERE "X" DESIGNATES:	
(8X) 150 (6) SKIP DASH		E	EPOXY
(9X) 200 (8) SKIP DASH		P	PAINT
(10X) 200 (8) DOTTED		T	THERMOPLASTIC
(11X) LETTERS AND ARROWS		U	POLYUREA
		TP	TEMPORARY PAVEMENT MARKING TAPE
		T3	PAVEMENT MARKING TAPE, TYPE III
			All dimensions are in millimeters (inches) unless otherwise shown.



- NOTE:**
1. ALL DIMENSIONS ARE IN METERS UNLESS OTHERWISE SHOWN.
 2. LANE DIMENSIONS ARE TO CENTER OF PAVEMENT MARKING.



REVISIONS	
NAME	DATE

ILLINOIS DEPARTMENT OF TRANSPORTATION
PAVEMENT MARKING PLAN
 FAI ROUTE 74 (I-74) (WB)
 STA. 141+600.000 - STA. 141+950.000
 DRAWN BY CADD
 CHECKED BY KJW
 DATE 11/12/04