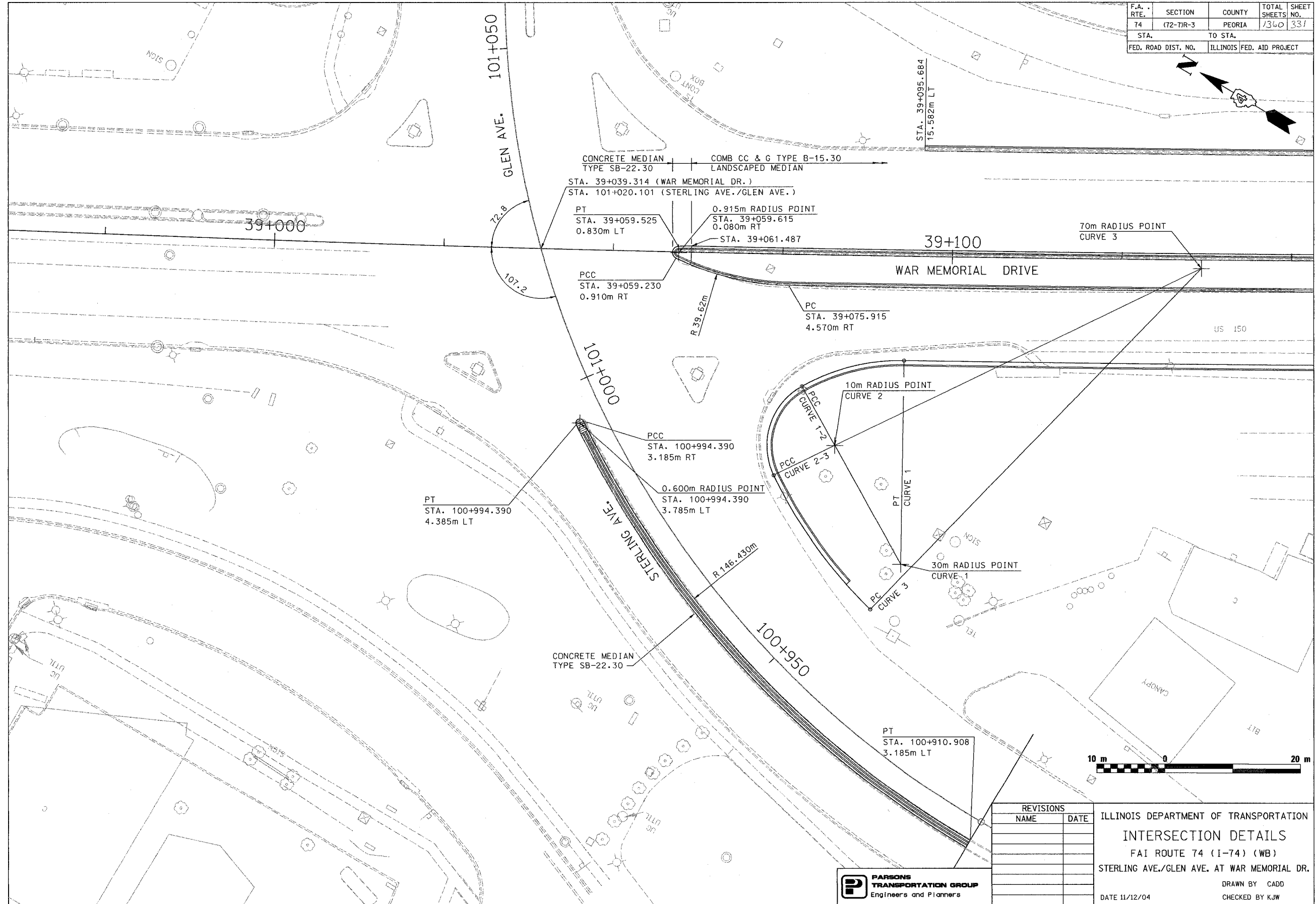


| | | | | |
|---------------------|------------|---------------------------|--------------|-----------|
| F.A. RTE. | SECTION | COUNTY | TOTAL SHEETS | SHEET NO. |
| 74 | (72-71R-3) | PEORIA | 1360 | 331 |
| STA. | | TO STA. | | |
| FED. ROAD DIST. NO. | | ILLINOIS FED. AID PROJECT | | |



| REVISIONS | |
|-----------|------|
| NAME | DATE |
| | |
| | |
| | |
| | |
| | |

ILLINOIS DEPARTMENT OF TRANSPORTATION
 INTERSECTION DETAILS
 FAI ROUTE 74 (I-74) (WB)
 STERLING AVE./GLEN AVE. AT WAR MEMORIAL DR.
 DRAWN BY CADD
 DATE 11/12/04
 CHECKED BY KJW

