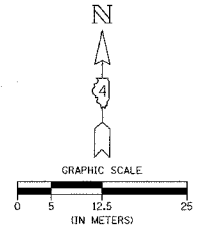
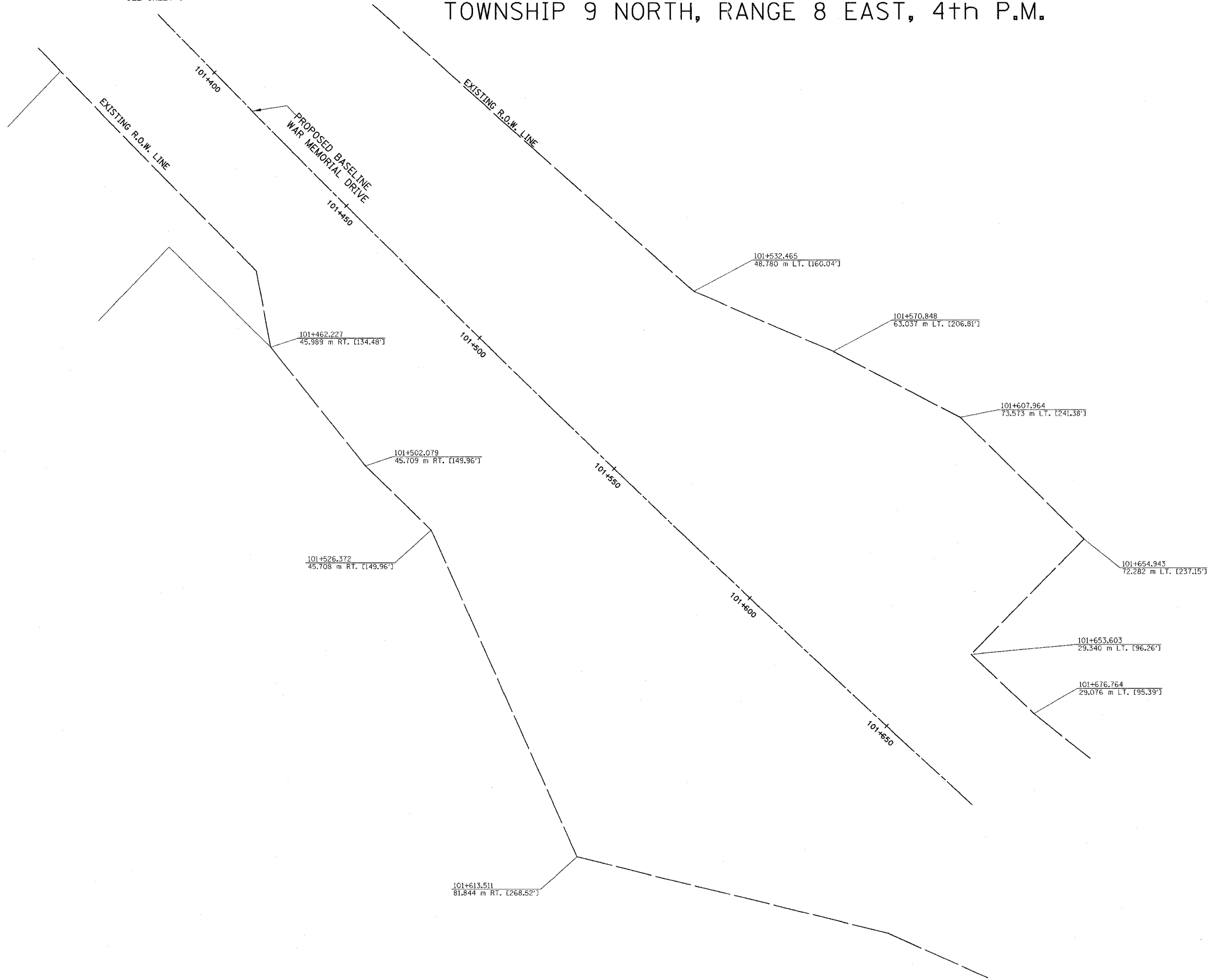


TOWNSHIP 9 NORTH, RANGE 8 EAST, 4th P.M.

SEE SHEET 5



PROPOSED  
CURVE DATA  
WAR MEMORIAL DR.  
P.I. = 100+736.837  
Δ = 20°20'45"  
R = 5374.661 m [17633.37']  
T = 964.437 m [3164.16']  
L = 1908.563 m [6261.68']  
E = 85.845 m [281.64']  
P.C. = 99+772.400  
P.T. = 101+680.963



APPROVED BY \_\_\_\_\_ DISTRICT ENGINEER  
DATE \_\_\_\_\_

DRAWN BY \_\_\_\_\_  
WRITTEN BY \_\_\_\_\_  
CHECKED BY \_\_\_\_\_  
INSPECTED BY \_\_\_\_\_

NOTES:  
SURVEYED IN METRIC, DIMENSIONS  
SHOWN IN ENGLISH HAVE BEEN  
CONVERTED (1 METER = 3.28083333')  
METRIC DIMENSIONS AND AREAS  
SHALL CONTROL.  
( ) ENGLISH EQUIVALENT  
( ) RECORD DATA

NOTE: PROJECT DATUM IS NAD83 ILLINOIS STATE PLANE  
COORDINATES, WEST ZONE. THE PROJECT COMBINATION  
FACTOR IS 0.999941679. ALL LAND ACQUISITION DOCUMENTS  
WERE PROJECTED TO "GROUND" COORDINATES. FINAL STAKED  
ALIGNMENTS WERE PROJECTED TO "GROUND" COORDINATES.  
ALL CONSTRUCTION DOCUMENTS WERE DEVELOPED USING  
"GRID" COORDINATES.

<b>RIGHT OF WAY PLANS</b>	
<b>F.A.I. ROUTE 74</b>	
CATALOG NO.	031087-00
SECTION	(72-8)R-1.72(9.9-1)R
STATION	101+400 TO 101+681
JOB. NO.	R-94-015-98 COUNTY PEORIA
SCALE	1 : 500 SHEET 327 OF 1360