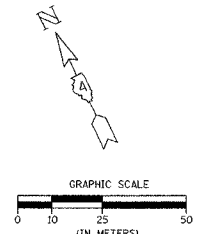


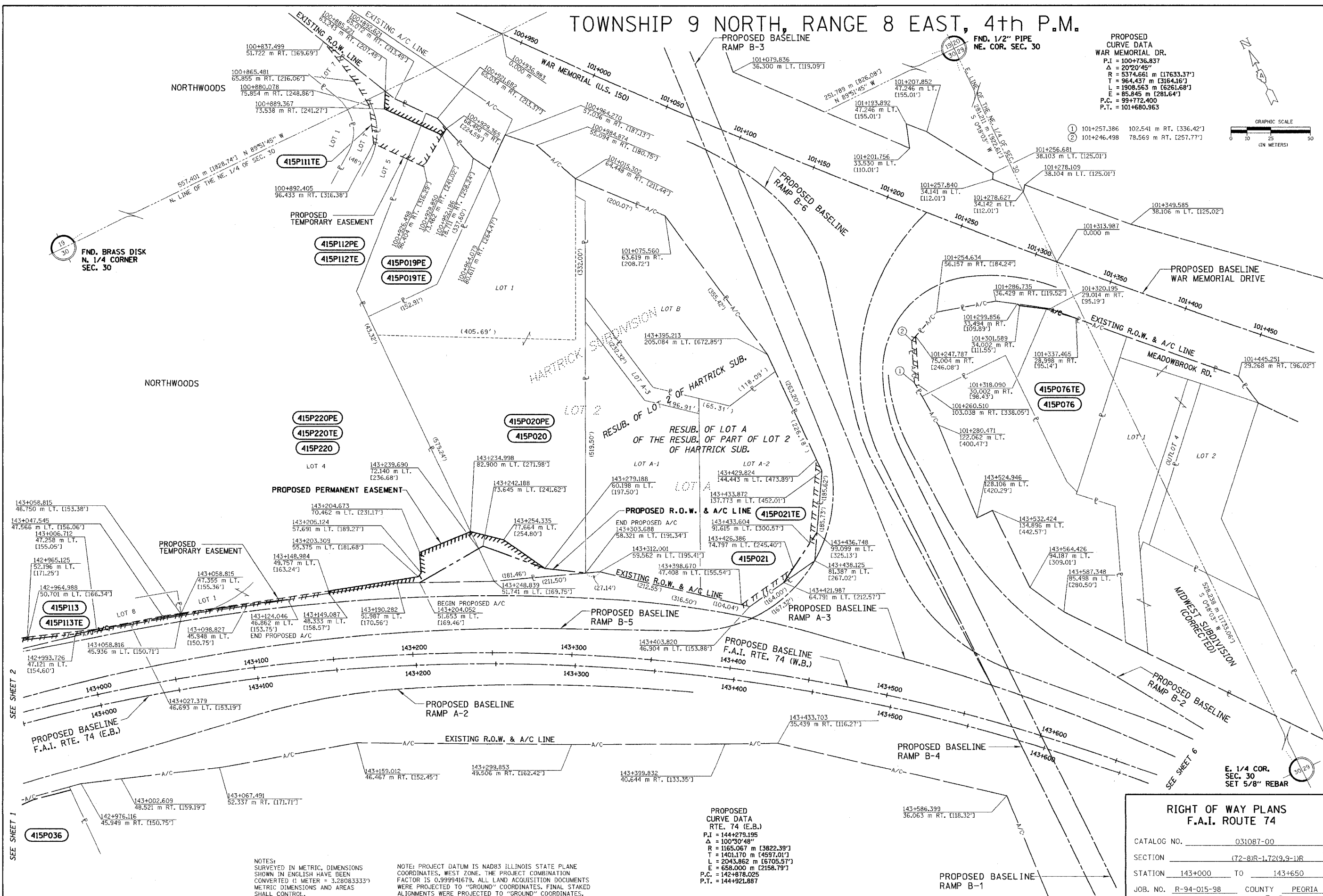
TOWNSHIP 9 NORTH, RANGE 8 EAST, 4th P.M.

FND. 1/2" PIPE
NE. COR. SEC. 30

PROPOSED
CURVE DATA
WAR MEMORIAL DR.
P.I = 100+736.837
Δ = 20°20'45"
R = 5374.661 m [17633.37']
T = 964.437 m [3164.16']
L = 1908.563 m [6261.68']
E = 85.845 m [281.64']
P.C. = 99+772.400
P.T. = 101+680.963



APPROVED BY _____
DISTRICT ENGINEER
DATE _____



NOTES:
SURVEYED IN METRIC, DIMENSIONS
SHOWN IN ENGLISH HAVE BEEN
CONVERTED (1 METER = 3.28083333')
METRIC DIMENSIONS AND AREAS
SHALL CONTROL.
() ENGLISH EQUIVALENT
() RECORD DATA

NOTE: PROJECT DATUM IS NAD83 ILLINOIS STATE PLANE
COORDINATES, WEST ZONE. THE PROJECT COMBINATION
FACTOR IS 0.999941679. ALL LAND ACQUISITION DOCUMENTS
WERE PROJECTED TO "GROUND" COORDINATES. FINAL STAKED
ALIGNMENTS WERE PROJECTED TO "GROUND" COORDINATES.
ALL CONSTRUCTION DOCUMENTS WERE DEVELOPED USING
"GRID" COORDINATES.

PROPOSED
CURVE DATA
RTE. 74 (E.B.)
P.I = 144+279.195
Δ = 100°30'48"
R = 1165.067 m [3822.39']
T = 1401.170 m [4597.01']
L = 2043.862 m [6705.57']
E = 658.000 m [2158.79']
P.C. = 142+878.025
P.T. = 144+921.887

RIGHT OF WAY PLANS F.A.I. ROUTE 74	
CATALOG NO.	031087-00
SECTION	(72-8)R-1.72(9-1)R
STATION	143+000 TO 143+650
JOB. NO.	R-94-015-98 COUNTY PEORIA
SCALE	1 : 1000 SHEET 325 OF 1360

NOTE: STATION OFFSETS FROM PROPOSED (E.B.) BASELINE OF F.A.I. RTE. 74 & PROPOSED BASELINE OF WAR MEMORIAL DR.