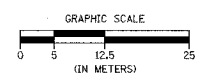
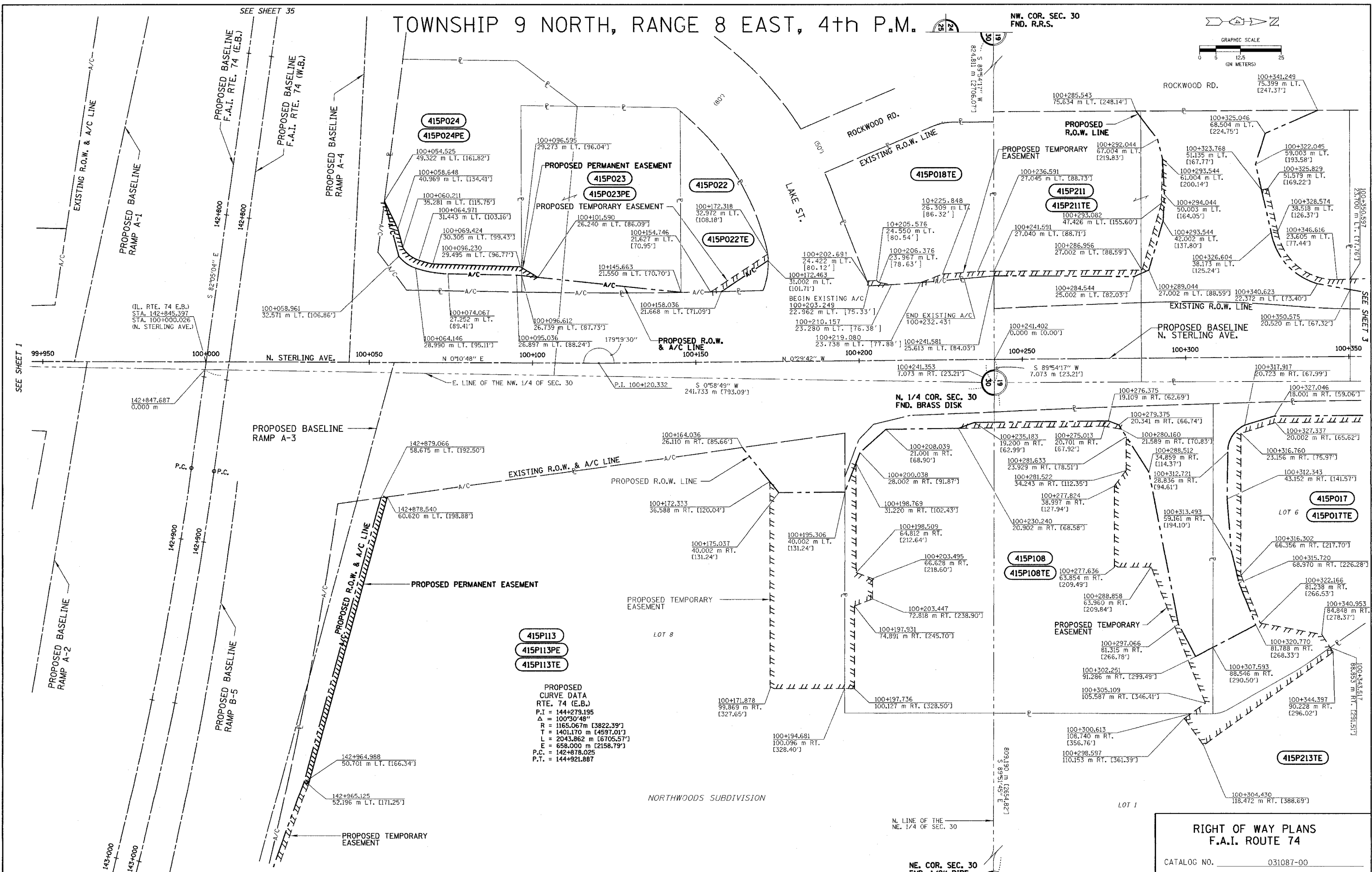


TOWNSHIP 9 NORTH, RANGE 8 EAST, 4th P.M.

N.W. COR. SEC. 30  
FND. R.R.S.



APPROVED BY \_\_\_\_\_ DISTRICT ENGINEER  
DATE \_\_\_\_\_



PROPOSED CURVE DATA  
RTE. 74 (E.B.)  
P.I. = 144+279.195  
Δ = 100°30'48"  
R = 1165.067 m [3822.39']  
T = 1401.170 m [4597.01']  
L = 2043.862 m [6705.57']  
E = 658.000 m [2158.79']  
P.C. = 142+878.025  
P.T. = 144+921.887

<b>RIGHT OF WAY PLANS</b>	
<b>F.A.I. ROUTE 74</b>	
CATALOG NO.	031087-00
SECTION	(72-B)-1.72(9.9-1)R
STATION	99+950 TO 100+350
JOB. NO.	R-94-015-98 COUNTY PEORIA
SCALE	1 : 500 SHEET 2 OF 1360

NOTES:  
SURVEYED IN METRIC. DIMENSIONS SHOWN IN ENGLISH HAVE BEEN CONVERTED (1 METER = 3.28083333'). METRIC DIMENSIONS AND AREAS SHALL CONTROL.  
[ ] ENGLISH EQUIVALENT  
( ) RECORD DATA

NOTE: PROJECT DATUM IS NAD83 ILLINOIS STATE PLANE COORDINATES, WEST ZONE. THE PROJECT COMBINATION FACTOR IS 0.999941679. ALL LAND ACQUISITION DOCUMENTS WERE PROJECTED TO "GROUND" COORDINATES. FINAL STAKED ALIGNMENTS WERE PROJECTED TO "GROUND" COORDINATES. ALL CONSTRUCTION DOCUMENTS WERE DEVELOPED USING "GRID" COORDINATES.

NOTE: STATION OFFSETS SHOWN FROM F.A.I. RTE. 74 ARE FROM THE E.B. BASELINE AND N. STERLING AVE.