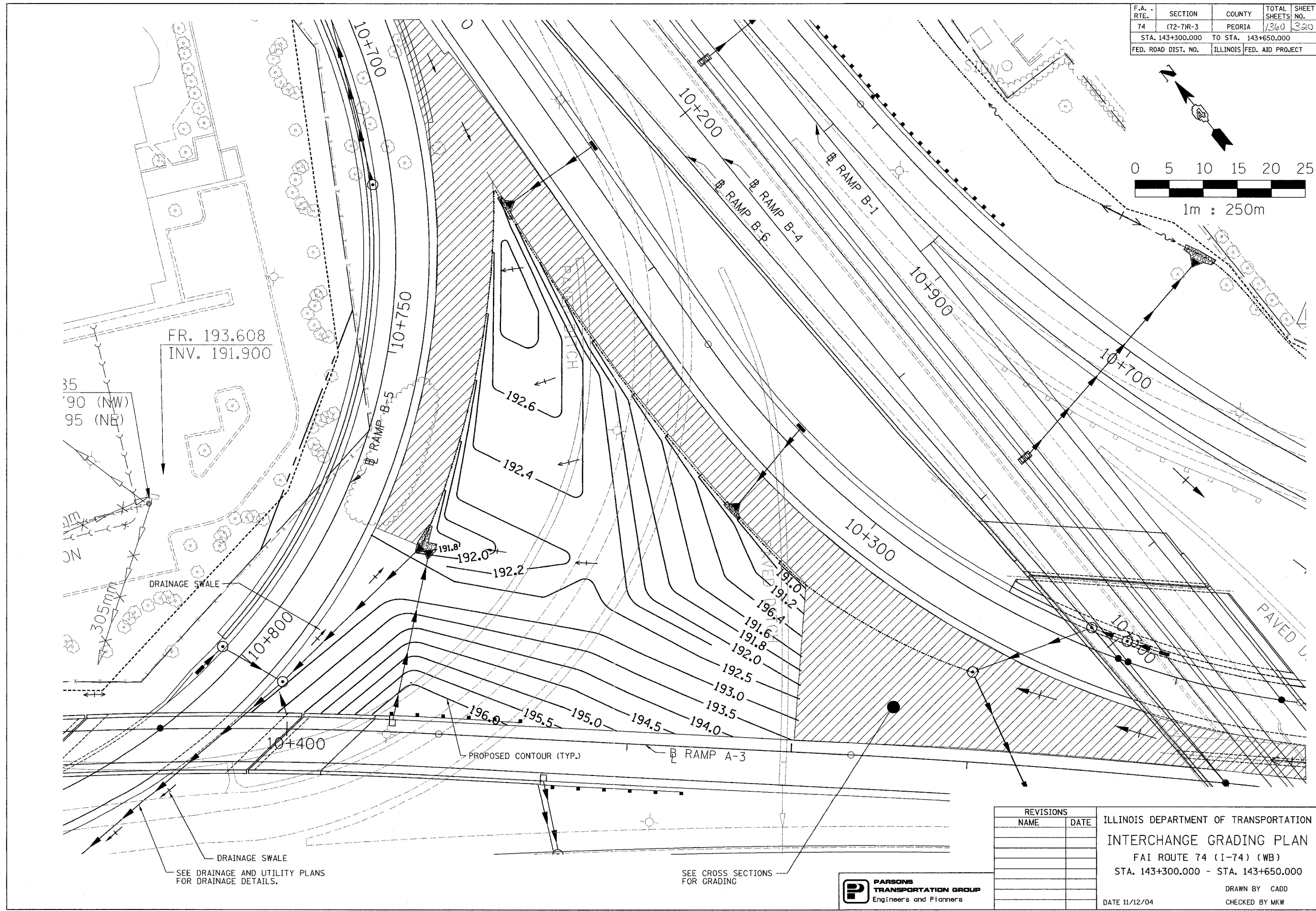
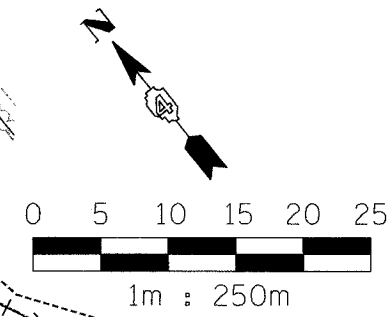
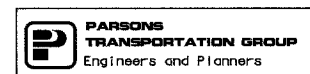


F.A. RTE.	SECTION	COUNTY	TOTAL SHEETS	SHEET NO.
74	(72-71R-3)	PEORIA	1360	320
STA. 143+300.000		TO STA. 143+650.000		
FED. ROAD DIST. NO.	ILLINOIS	FED. AID PROJECT		



SEE DRAINAGE AND UTILITY PLANS FOR DRAINAGE DETAILS.

SEE CROSS SECTIONS FOR GRADING



REVISIONS	
NAME	DATE

ILLINOIS DEPARTMENT OF TRANSPORTATION
 INTERCHANGE GRADING PLAN
 FAI ROUTE 74 (I-74) (WB)
 STA. 143+300.000 - STA. 143+650.000
 DRAWN BY CADD
 CHECKED BY MKW
 DATE 11/12/04