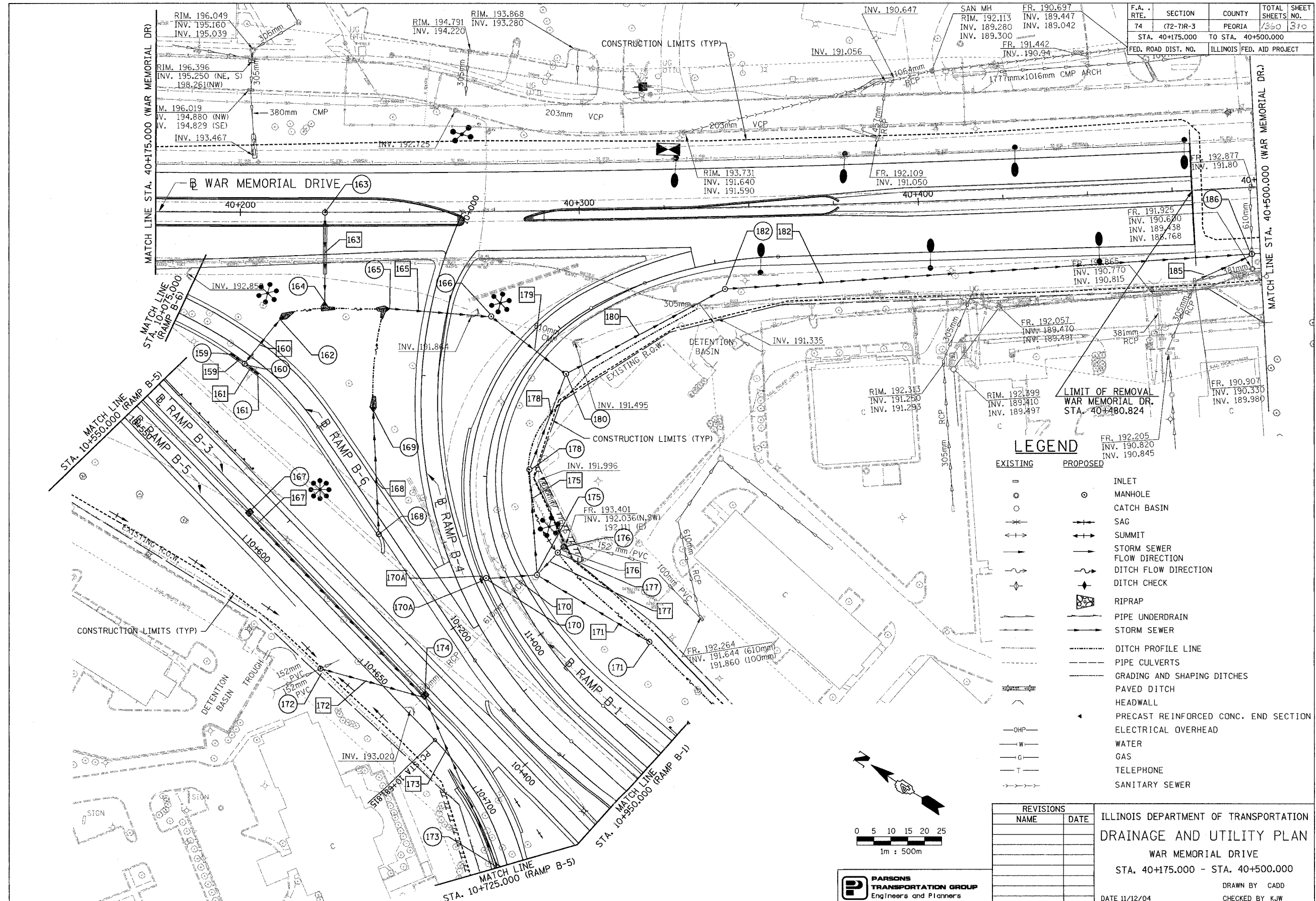
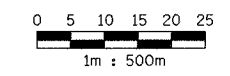


F.A. RTE.	SECTION	COUNTY	TOTAL SHEETS	SHEET NO.
74	(72-7)R-3	PEORIA	1360	310
STA. 40+175.000		TO STA. 40+500.000		
FED. ROAD DIST. NO.		ILLINOIS FED. AID PROJECT		



LEGEND

EXISTING	PROPOSED	DESCRIPTION
□	○	INLET
○	○	MANHOLE
○	○	CATCH BASIN
+	+	SAG
+	+	SUMMIT
→	→	STORM SEWER FLOW DIRECTION
→	→	DITCH FLOW DIRECTION
+	+	DITCH CHECK
▨	▨	RIPRAP
—	—	PIPE UNDERDRAIN
—	—	STORM SEWER
---	---	DITCH PROFILE LINE
---	---	PIPE CULVERTS
---	---	GRADING AND SHAPING DITCHES
---	---	PAVED DITCH
---	---	HEADWALL
---	---	PRECAST REINFORCED CONC. END SECTION
—OHP—		ELECTRICAL OVERHEAD
—W—		WATER
—G—		GAS
—T—		TELEPHONE
—S—		SANITARY SEWER



REVISIONS	
NAME	DATE

ILLINOIS DEPARTMENT OF TRANSPORTATION
DRAINAGE AND UTILITY PLAN
 WAR MEMORIAL DRIVE
 STA. 40+175.000 - STA. 40+500.000
 DRAWN BY CADD
 CHECKED BY KJW
 DATE 11/12/04

