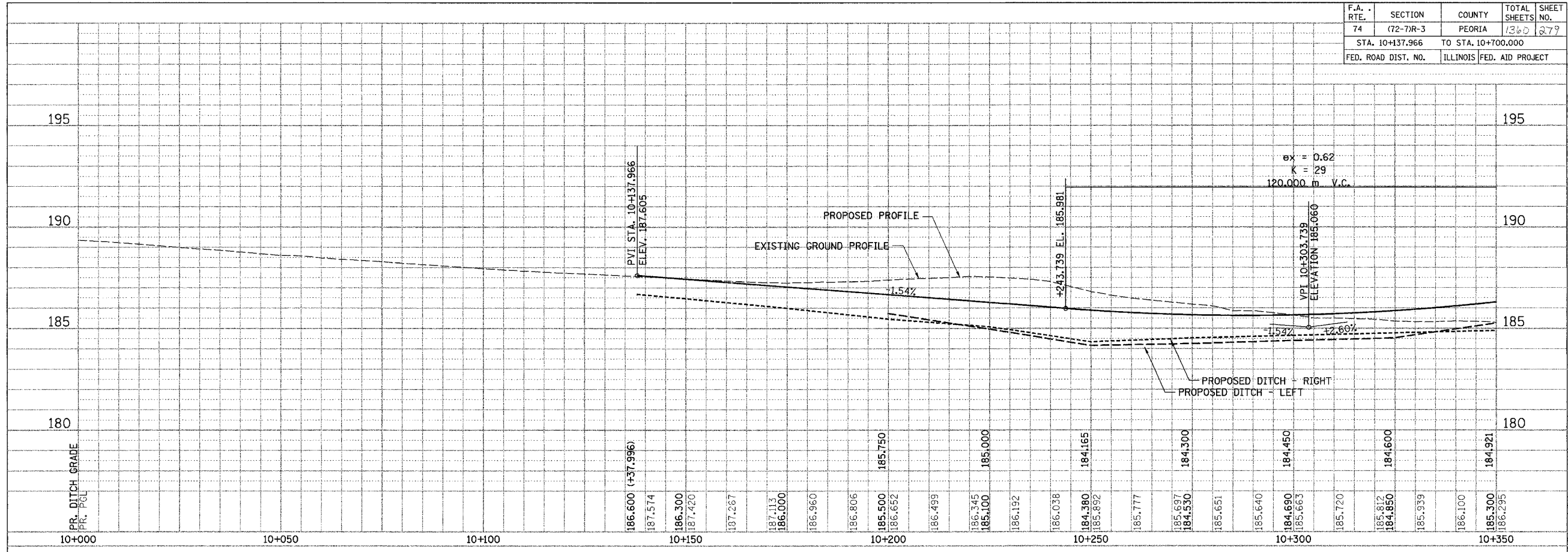
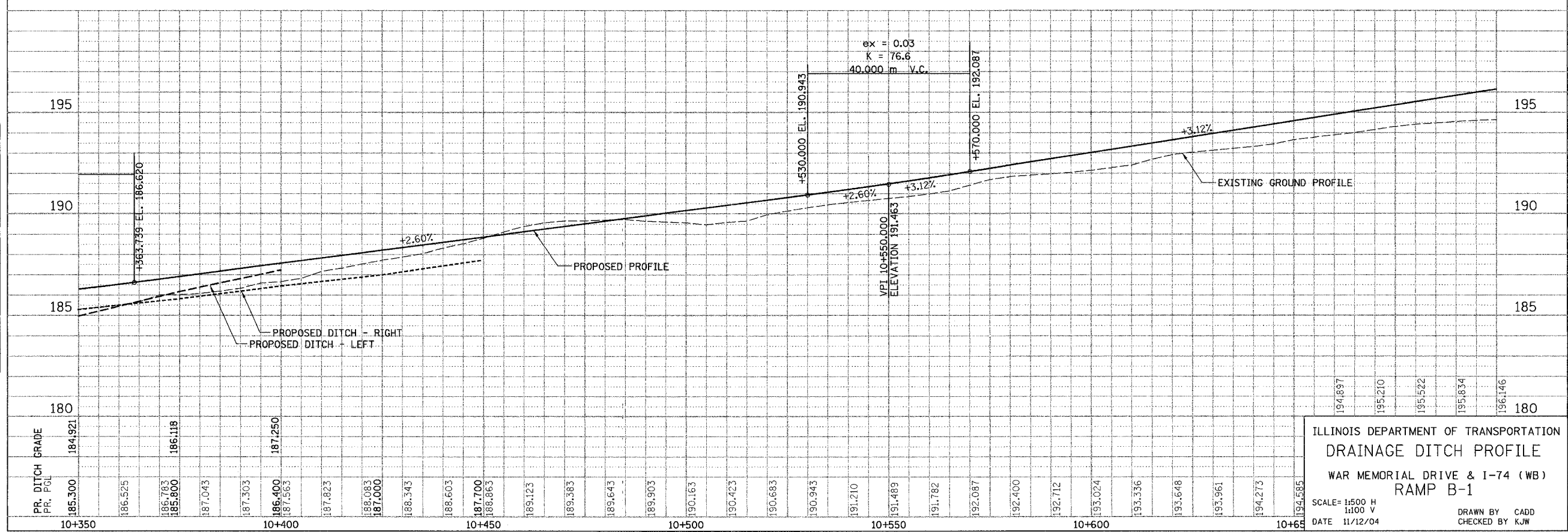


|                     |           |                           |              |           |
|---------------------|-----------|---------------------------|--------------|-----------|
| F.A. RTE.           | SECTION   | COUNTY                    | TOTAL SHEETS | SHEET NO. |
| 74                  | (72-7)R-3 | PEORIA                    | 1360         | 279       |
| STA. 10+137.966     |           | TO STA. 10+700.000        |              |           |
| FED. ROAD DIST. NO. |           | ILLINOIS FED. AID PROJECT |              |           |

|                      |    |      |
|----------------------|----|------|
| FINAL SURVEY PLOTTED | BY | DATE |
| NOTE BOOK TEMPLATE   |    |      |
| AREAS CHECKED        |    |      |
| NO.                  |    |      |



|                         |    |      |
|-------------------------|----|------|
| ORIGINAL SURVEY PLOTTED | BY | DATE |
| NOTE BOOK TEMPLATE      |    |      |
| AREAS CHECKED           |    |      |
| NO.                     |    |      |



ILLINOIS DEPARTMENT OF TRANSPORTATION  
DRAINAGE DITCH PROFILE  
WAR MEMORIAL DRIVE & I-74 (WB)  
RAMP B-1  
SCALE= 1:500 H  
1:100 V  
DATE 11/12/04  
DRAWN BY CADD  
CHECKED BY KJW