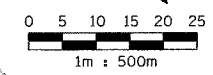
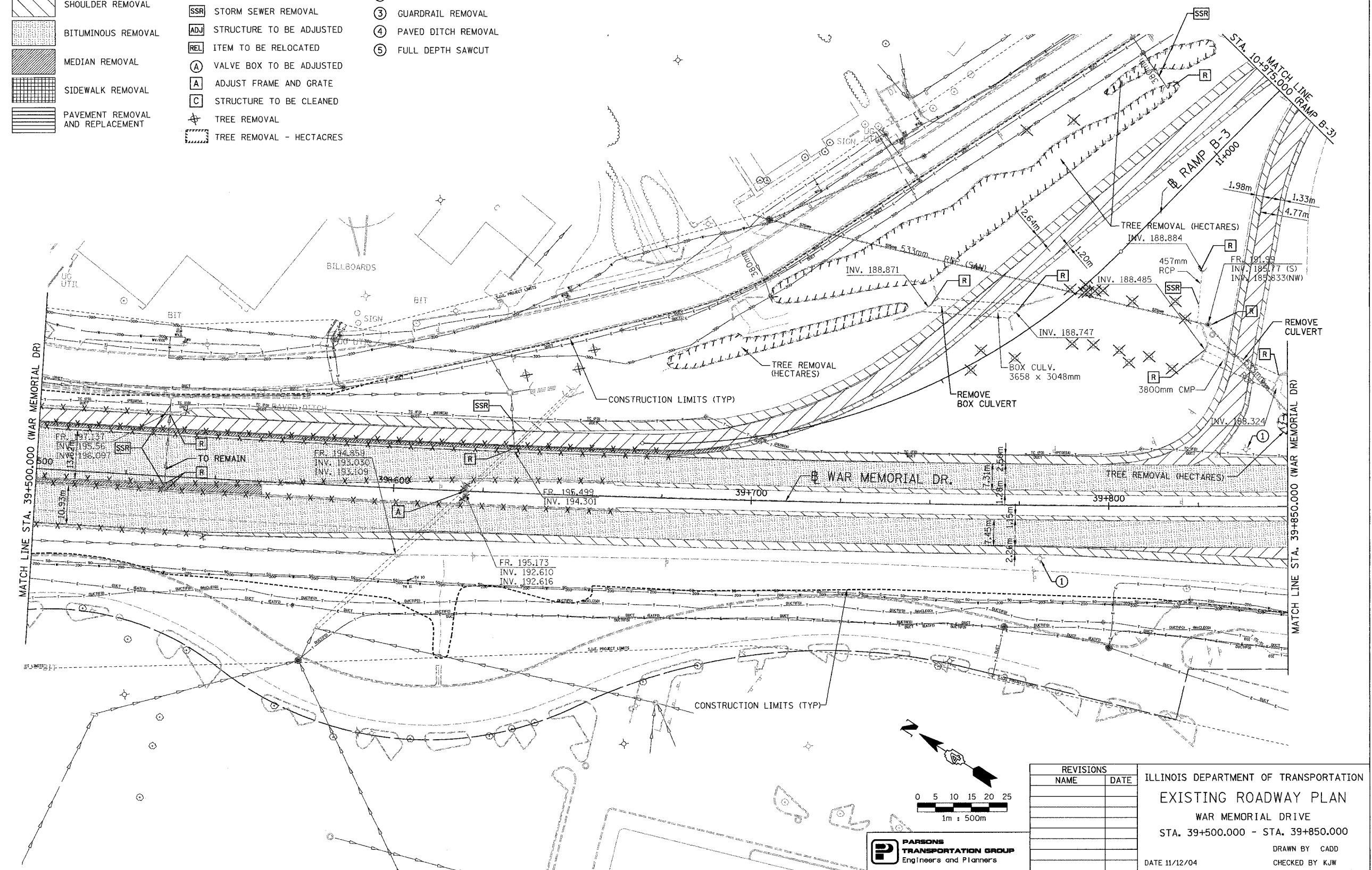


F.A. RTE.	SECTION	COUNTY	TOTAL SHEETS	SHEET NO.
74	(72-71R-3)	PEORIA	1360	252
STA. 39+500.000		TO STA. 39+850.000		
FED. ROAD DIST. NO.		ILLINOIS FED. AID PROJECT		

REMOVAL LEGEND AND KEY

- | | | | | | |
|--|----------------------------------|--|-------------------------------|---|--------------------------------------|
| | PAVEMENT REMOVAL | | COMB. CURB AND GUTTER REMOVAL | ① | LIGHT FIXTURE AND FOUNDATION REMOVAL |
| | SHOULDER REMOVAL | | STRUCTURE REMOVAL | ② | FENCE REMOVAL |
| | BITUMINOUS REMOVAL | | STORM SEWER REMOVAL | ③ | GUARDRAIL REMOVAL |
| | MEDIAN REMOVAL | | STRUCTURE TO BE ADJUSTED | ④ | PAVED DITCH REMOVAL |
| | SIDEWALK REMOVAL | | ITEM TO BE RELOCATED | ⑤ | FULL DEPTH SAWCUT |
| | PAVEMENT REMOVAL AND REPLACEMENT | | VALVE BOX TO BE ADJUSTED | | |
| | | | ADJUST FRAME AND GRATE | | |
| | | | STRUCTURE TO BE CLEANED | | |
| | | | TREE REMOVAL | | |
| | | | TREE REMOVAL - HECTARES | | |

NOTES:
 1. EXISTING UNDERDRAINS SHALL BE REMOVED AND INCLUDED IN THE COST OF PAVEMENT REMOVAL.



PARSONS
 TRANSPORTATION GROUP
 Engineers and Planners

REVISIONS	
NAME	DATE

ILLINOIS DEPARTMENT OF TRANSPORTATION
 EXISTING ROADWAY PLAN
 WAR MEMORIAL DRIVE
 STA. 39+500.000 - STA. 39+850.000
 DRAWN BY CADD
 CHECKED BY KJW
 DATE 11/12/04