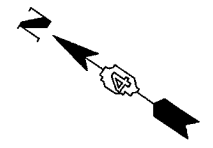
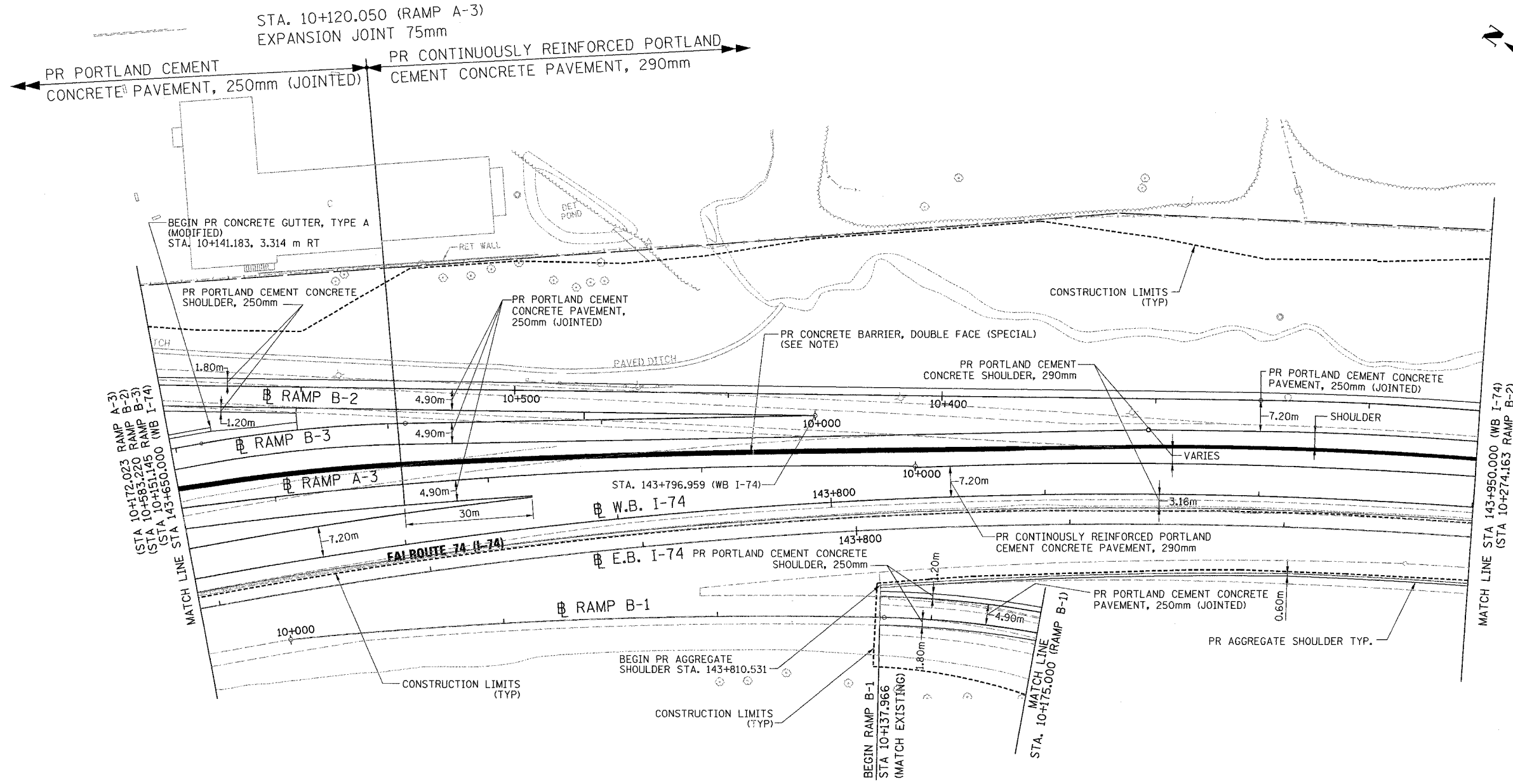
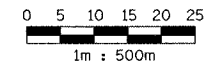


F.A. RTE.	SECTION	COUNTY	TOTAL SHEETS	SHEET NO.
74	(72-7)R-3	PEORIA	1360	289
STA. 143+650.000 TO STA. 143+950.000				
FED. ROAD DIST. NO.			ILLINOIS FED. AID PROJECT	



NOTE:  
SEE CONCRETE BARRIER ELEVATION DETAILS  
FOR LAYOUT OF CONCRETE BARRIER, DOUBLE FACE (SPECIAL)



**PARSONS**  
**TRANSPORTATION GROUP**  
Engineers and Planners

REVISIONS	
NAME	DATE

ILLINOIS DEPARTMENT OF TRANSPORTATION  
PROPOSED ROADWAY PLAN  
FAI ROUTE 74 (I-74) (WB)  
STA. 143+650.000 - STA. 143+950.000  
DRAWN BY CADD  
CHECKED BY KJW  
DATE 11/12/04