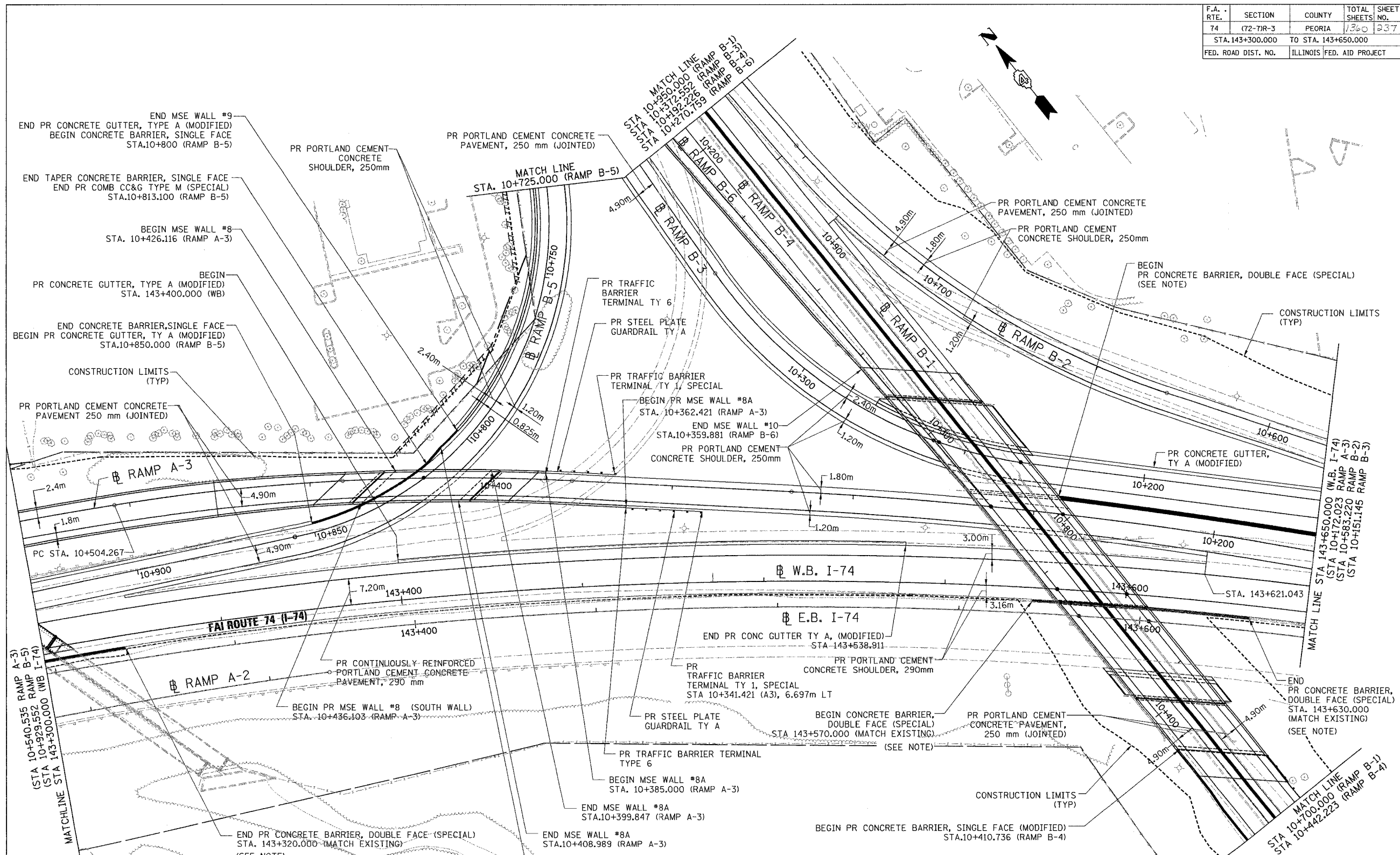


F.A. RTE.	SECTION	COUNTY	TOTAL SHEETS	SHEET NO.
74	(72-7)R-3	PEORIA	1360	237
STA. 143+300.000		TO STA. 143+650.000		
FED. ROAD DIST. NO.		ILLINOIS FED. AID PROJECT		



NOTE:  
SEE CONCRETE BARRIER ELEVATION DETAILS  
FOR LAYOUT OF CONCRETE BARRIER, DOUBLE FACE (SPECIAL)

REVISIONS	
NAME	DATE

0 5 10 15 20 25  
1m : 500m

**PARSONS TRANSPORTATION GROUP**  
Engineers and Planners

ILLINOIS DEPARTMENT OF TRANSPORTATION  
**PROPOSED ROADWAY PLAN**  
FAI ROUTE 74 (I-74) (WB)  
STA. 143+300.000 - STA. 143+650.000  
DRAWN BY CADD  
CHECKED BY KJW  
DATE 11/12/04