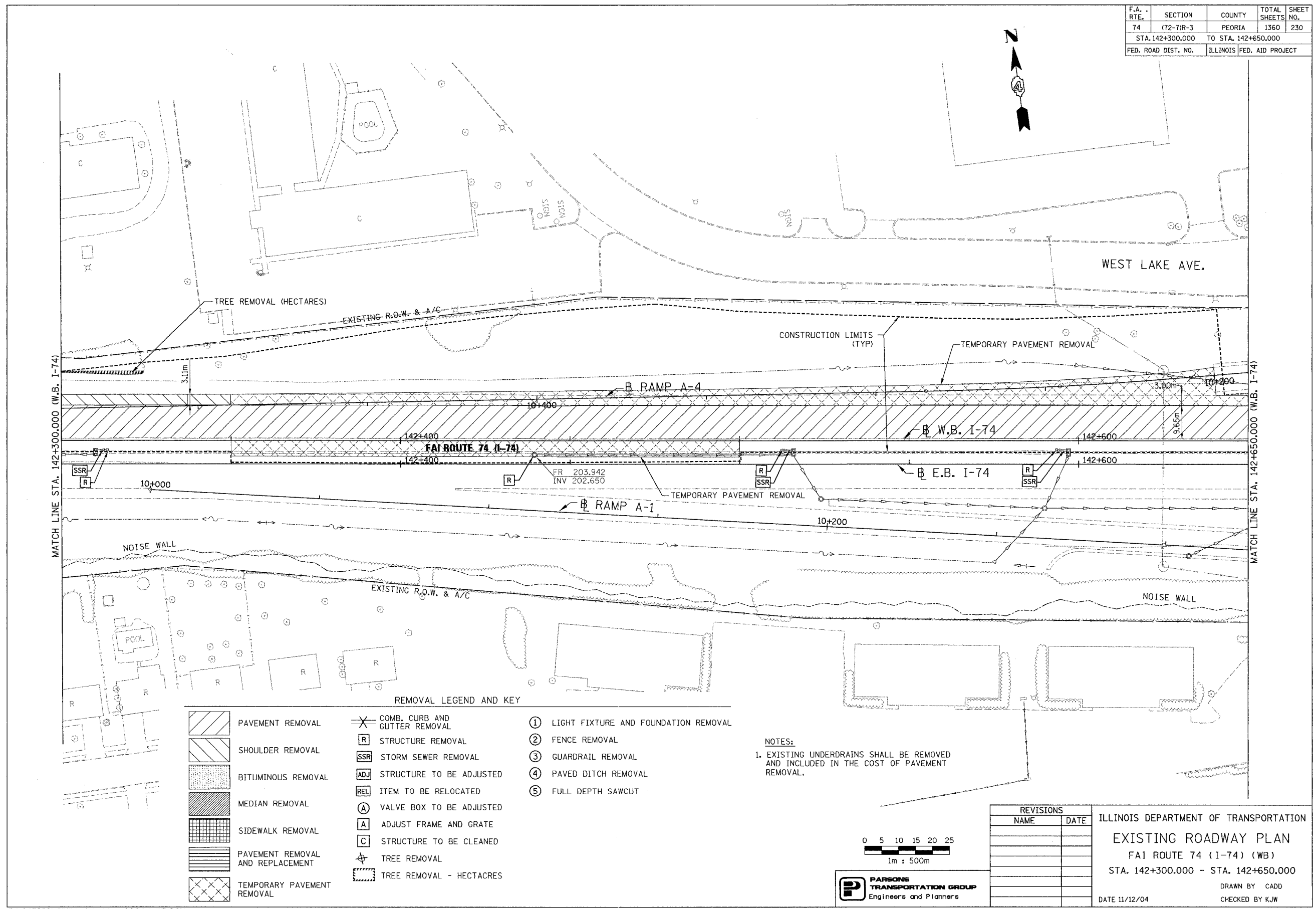


F.A. RTE.	SECTION	COUNTY	TOTAL SHEETS	SHEET NO.
74	(72-71R-3)	PEORIA	1360	230
STA. 142+300.000 TO STA. 142+650.000				
FED. ROAD DIST. NO.		ILLINOIS FED. AID PROJECT		



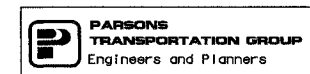
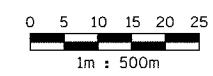
MATCH LINE STA. 142+300.000 (W.B. I-74)

MATCH LINE STA. 142+650.000 (W.B. I-74)

REMOVAL LEGEND AND KEY

	PAVEMENT REMOVAL		COMB. CURB AND GUTTER REMOVAL	①	LIGHT FIXTURE AND FOUNDATION REMOVAL
	SHOULDER REMOVAL		STRUCTURE REMOVAL	②	FENCE REMOVAL
	BITUMINOUS REMOVAL		STORM SEWER REMOVAL	③	GUARDRAIL REMOVAL
	MEDIAN REMOVAL		STRUCTURE TO BE ADJUSTED	④	PAVED DITCH REMOVAL
	SIDEWALK REMOVAL		ITEM TO BE RELOCATED	⑤	FULL DEPTH SAWCUT
	PAVEMENT REMOVAL AND REPLACEMENT		VALVE BOX TO BE ADJUSTED		
			ADJUST FRAME AND GRATE		
	TEMPORARY PAVEMENT REMOVAL		STRUCTURE TO BE CLEANED		
			TREE REMOVAL		
			TREE REMOVAL - HECTARES		

NOTES:
 1. EXISTING UNDERDRAINS SHALL BE REMOVED AND INCLUDED IN THE COST OF PAVEMENT REMOVAL.



REVISIONS	
NAME	DATE

ILLINOIS DEPARTMENT OF TRANSPORTATION
EXISTING ROADWAY PLAN
 FAI ROUTE 74 (I-74) (WB)
 STA. 142+300.000 - STA. 142+650.000
 DATE 11/12/04
 DRAWN BY CADD
 CHECKED BY KJW