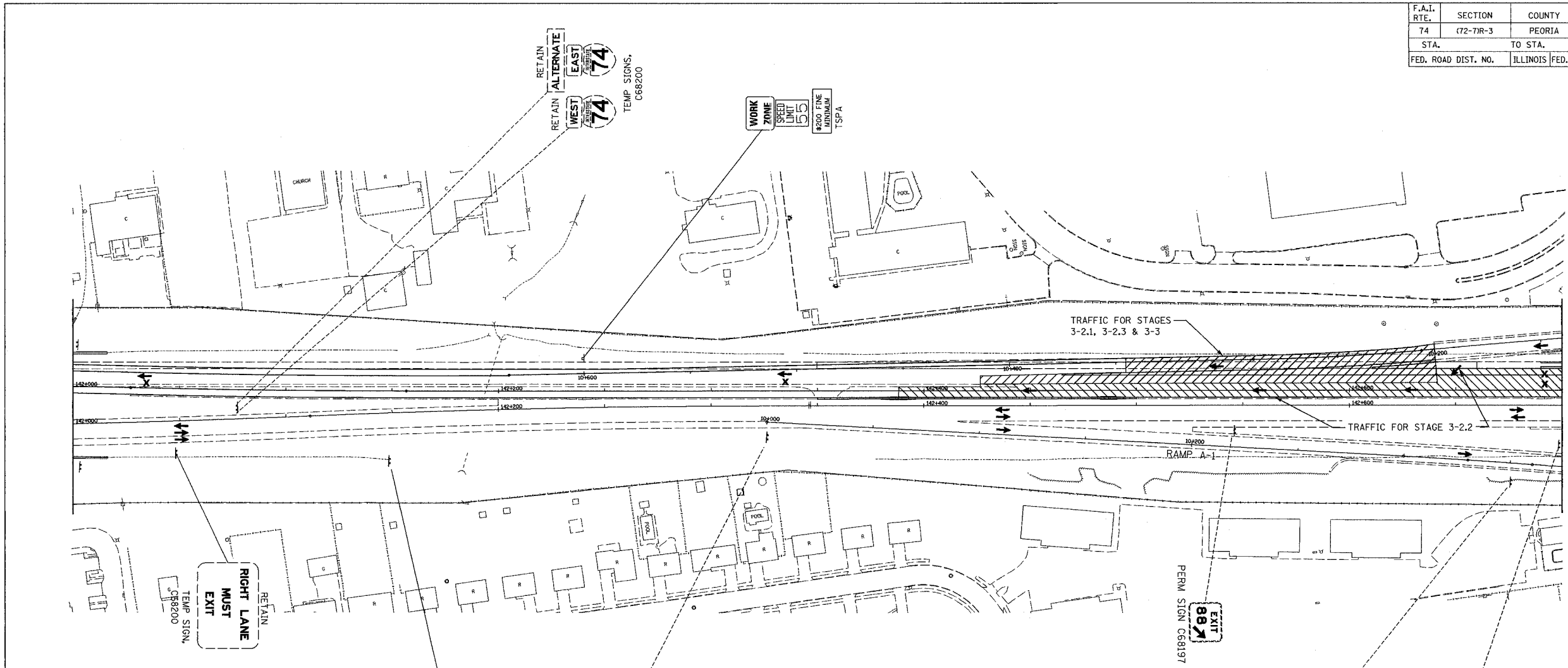
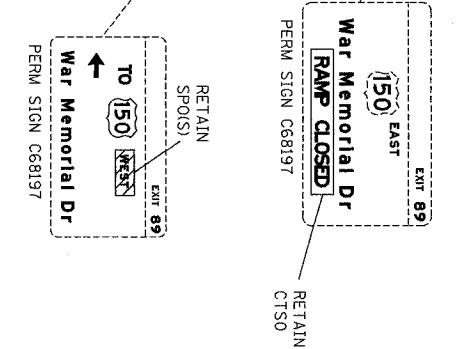
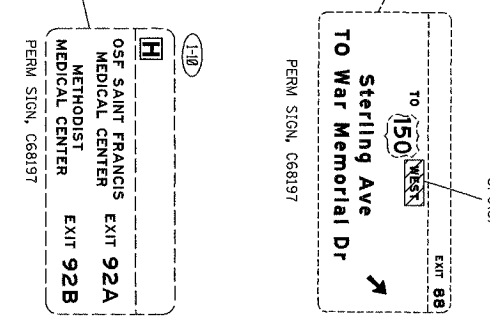


F.A.I. RTE.	SECTION	COUNTY	TOTAL SHEETS	SHEET NO.
74	(72-7)R-3	PEORIA	1260	200
STA.		TO STA.		
FED. ROAD DIST. NO.		ILLINOIS FED. AID PROJECT		



- LEGEND:
- PERM SIGN, C68197 - PERMANENT SIGN, INSTALLED IN CONTRACT NO. 68197
 - TEMP SIGN, C68193 - EXISTING TEMPORARY SIGN INSTALLED IN CONTRACT 68193
 - RET - RETAIN EXISTING SIGN
 - PSR - REMOVAL IN PERMANENT SIGNING PLANS (TIMING OF REMOVAL INDICATED IN SUB-STAGE BY X'S)
 - RTSPA - REINSTALL TEMPORARY SIGN PANEL ASSEMBLY (INCLUDES REMOVAL)
 - CTSO - COMPOSITE TEMPORARY SIGN OVERLAY (INCLUDES REMOVAL)
 - SPO(S) - SIGN PANEL OVERLAY, SPECIAL (INCLUDES REMOVAL)
 - TSPO - TEMPORARY SIGN PANEL OVERLAY (INCLUDES REMOVAL)
 - TSPA - TEMPORARY SIGN PANEL ASSEMBLY (INCLUDES REMOVAL)
 - RSPA - REMOVE SIGN PANEL ASSEMBLY
 - RELSPA - RELOCATE SIGN PANEL ASSEMBLY
 - SP - SIGN PANEL, TYPE 1, 2 OR 3 AND ASSEMBLY TYPE A OR B.
 - TC&P(SP) - SIGN INCLUDED IN MOT STANDARD FOR TRAFFIC CONTROL (PAID AS PART OF TRAFFIC CONTROL AND PROTECTION, SPECIAL)
 - TC&P(EX) - SIGN INCLUDED IN MOT STANDARD FOR TRAFFIC CONTROL AND PROTECTION (PAID AS PART OF TRAFFIC CONTROL AND PROTECTION, EXPRESSWAYS)



REVISIONS	
NAME	DATE

ILLINOIS DEPARTMENT OF TRANSPORTATION
 CONCEPTUAL TEMPORARY
 INFORMATION SIGNING PLAN
 CONTRACT 68200
 STAGES 3-2.1, 3-2.2, 3-2.3 & 3-3
 DRAWN BY CADD
 CHECKED BY MWP
 DATE: 11/12/04



*****FILE*****