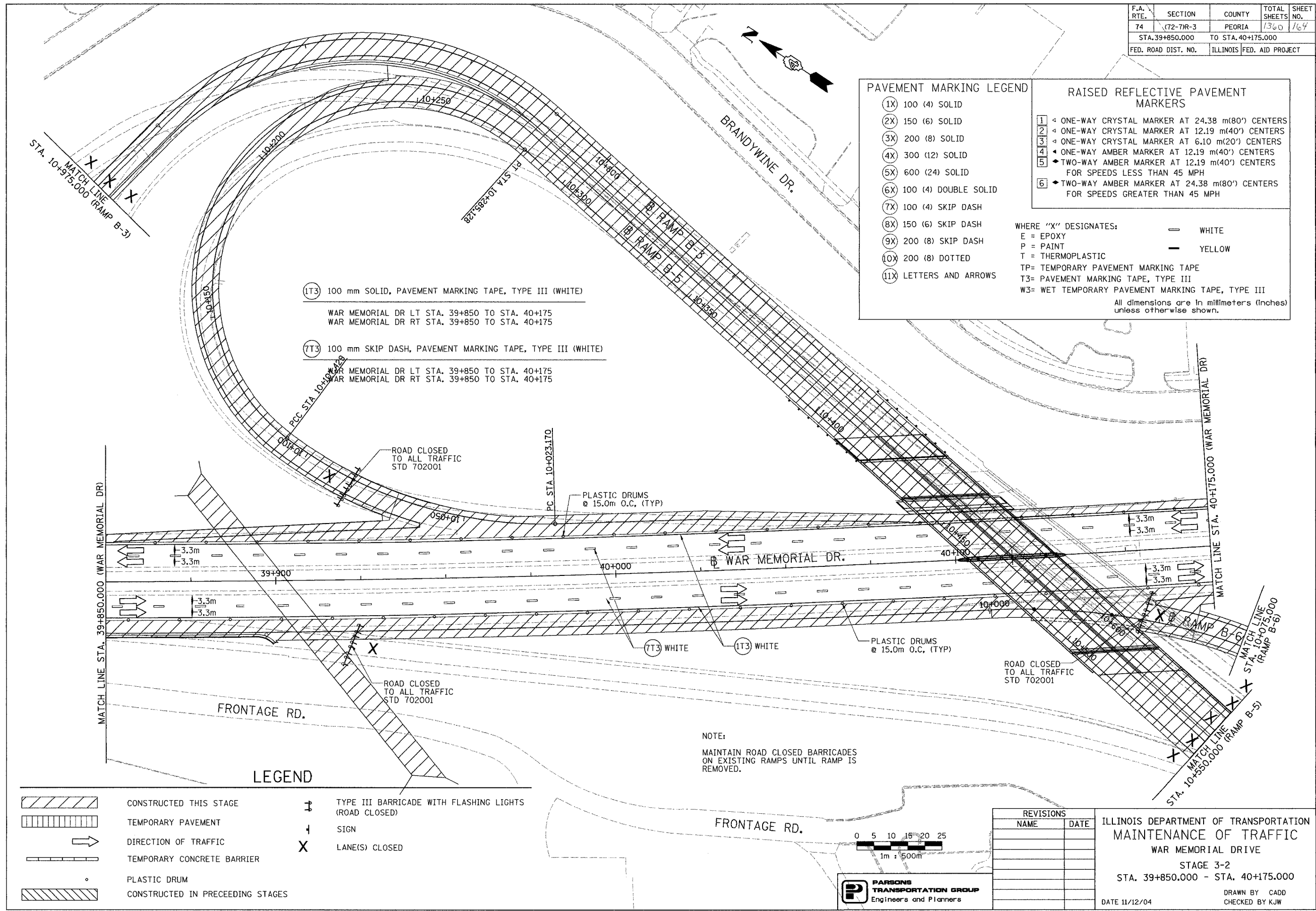


F.A. RTE.	SECTION	COUNTY	TOTAL SHEETS	SHEET NO.
74	(72-7)R-3	PEORIA	1360	164
STA. 39+850.000		TO STA. 40+175.000		
FED. ROAD DIST. NO.	ILLINOIS	FED. AID PROJECT		



**PAVEMENT MARKING LEGEND**

- (1X) 100 (4) SOLID
- (2X) 150 (6) SOLID
- (3X) 200 (8) SOLID
- (4X) 300 (12) SOLID
- (5X) 600 (24) SOLID
- (6X) 100 (4) DOUBLE SOLID
- (7X) 100 (4) SKIP DASH
- (8X) 150 (6) SKIP DASH
- (9X) 200 (8) SKIP DASH
- (10X) 200 (8) DOTTED
- (11X) LETTERS AND ARROWS

**RAISED REFLECTIVE PAVEMENT MARKERS**

- 1 ◀ ONE-WAY CRYSTAL MARKER AT 24.38 m(80') CENTERS
- 2 ◀ ONE-WAY CRYSTAL MARKER AT 12.19 m(40') CENTERS
- 3 ◀ ONE-WAY CRYSTAL MARKER AT 6.10 m(20') CENTERS
- 4 ◀ ONE-WAY AMBER MARKER AT 12.19 m(40') CENTERS
- 5 ◀ TWO-WAY AMBER MARKER AT 12.19 m(40') CENTERS FOR SPEEDS LESS THAN 45 MPH
- 6 ◀ TWO-WAY AMBER MARKER AT 24.38 m(80') CENTERS FOR SPEEDS GREATER THAN 45 MPH

WHERE "X" DESIGNATES:      = WHITE  
 E = EPOXY                              = YELLOW  
 P = PAINT  
 T = THERMOPLASTIC  
 TP= TEMPORARY PAVEMENT MARKING TAPE  
 T3= PAVEMENT MARKING TAPE, TYPE III  
 W3= WET TEMPORARY PAVEMENT MARKING TAPE, TYPE III  
 All dimensions are in millimeters (inches) unless otherwise shown.

- (1T3) 100 mm SOLID, PAVEMENT MARKING TAPE, TYPE III (WHITE)  
 WAR MEMORIAL DR LT STA. 39+850 TO STA. 40+175  
 WAR MEMORIAL DR RT STA. 39+850 TO STA. 40+175
- (7T3) 100 mm SKIP DASH, PAVEMENT MARKING TAPE, TYPE III (WHITE)  
 WAR MEMORIAL DR LT STA. 39+850 TO STA. 40+175  
 WAR MEMORIAL DR RT STA. 39+850 TO STA. 40+175

**LEGEND**

	CONSTRUCTED THIS STAGE		TYPE III BARRICADE WITH FLASHING LIGHTS (ROAD CLOSED)
	TEMPORARY PAVEMENT		SIGN
	DIRECTION OF TRAFFIC		LANE(S) CLOSED
	TEMPORARY CONCRETE BARRIER		
	PLASTIC DRUM		
	CONSTRUCTED IN PRECEEDING STAGES		

NOTE:  
 MAINTAIN ROAD CLOSED BARRICADES ON EXISTING RAMPS UNTIL RAMP IS REMOVED.



**PARSONS TRANSPORTATION GROUP**  
 Engineers and Planners

**REVISIONS**

NAME	DATE

ILLINOIS DEPARTMENT OF TRANSPORTATION  
 MAINTENANCE OF TRAFFIC  
 WAR MEMORIAL DRIVE  
 STAGE 3-2  
 STA. 39+850.000 - STA. 40+175.000  
 DRAWN BY CADD  
 CHECKED BY KJW  
 DATE 11/12/04