

F.A. RTE.	SECTION	COUNTY	TOTAL SHEETS	SHEET NO.
74	(72-7)R-3	PEORIA	1360	163
STA. 39+500.000		TO STA. 39+850.000		
FED. ROAD DIST. NO.		ILLINOIS	FED. AID PROJECT	

PAVEMENT MARKING LEGEND

- (1X) 100 (4) SOLID
- (2X) 150 (6) SOLID
- (3X) 200 (8) SOLID
- (4X) 300 (12) SOLID
- (5X) 600 (24) SOLID
- (6X) 100 (4) DOUBLE SOLID
- (7X) 100 (4) SKIP DASH
- (8X) 150 (6) SKIP DASH
- (9X) 200 (8) SKIP DASH
- (10X) 200 (8) DOTTED
- (11X) LETTERS AND ARROWS

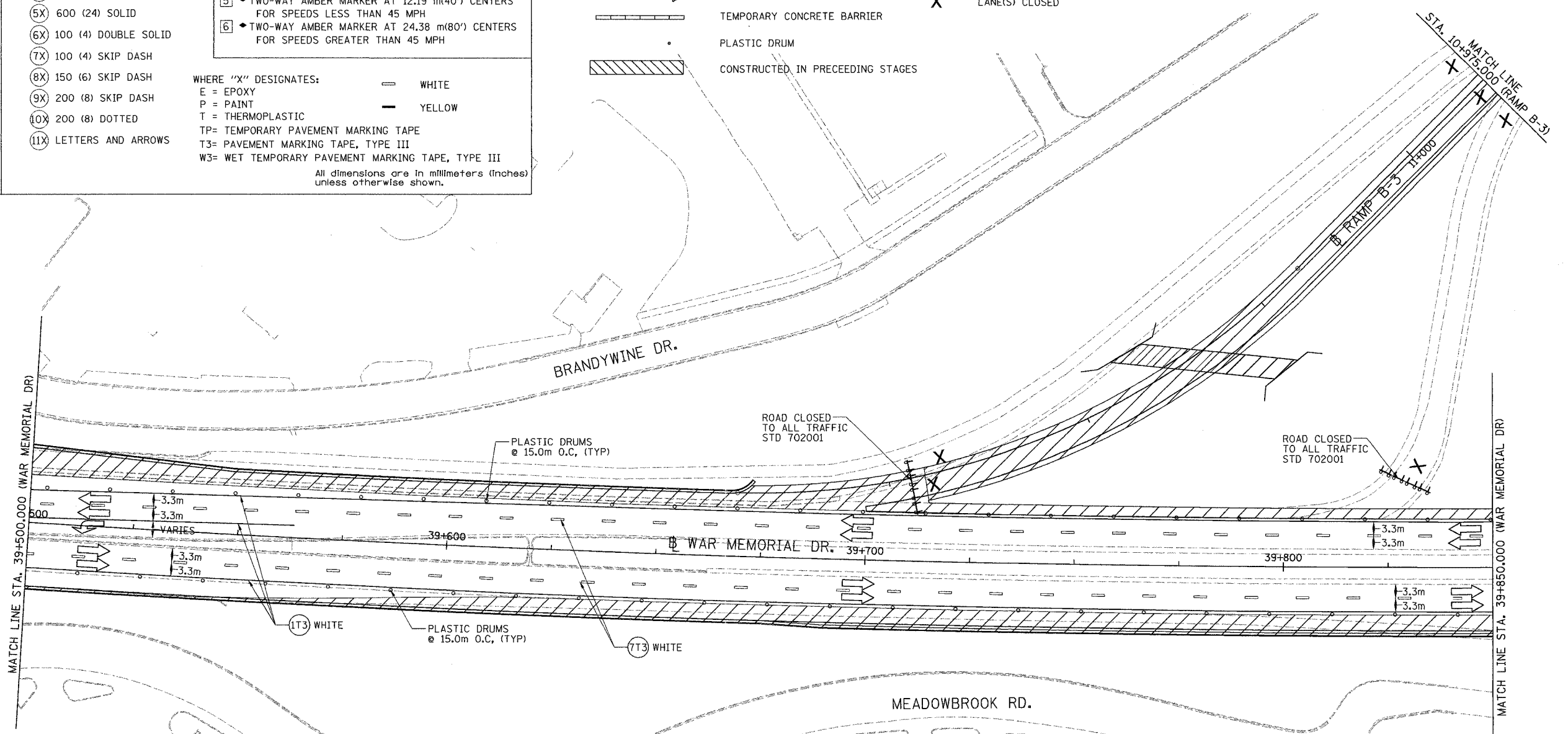
RAISED REFLECTIVE PAVEMENT MARKERS

- 1 ◁ ONE-WAY CRYSTAL MARKER AT 24.38 m(80') CENTERS
- 2 ▷ ONE-WAY CRYSTAL MARKER AT 12.19 m(40') CENTERS
- 3 ◁ ONE-WAY CRYSTAL MARKER AT 6.10 m(20') CENTERS
- 4 ◁ ONE-WAY AMBER MARKER AT 12.19 m(40') CENTERS
- 5 ▷ TWO-WAY AMBER MARKER AT 12.19 m(40') CENTERS FOR SPEEDS LESS THAN 45 MPH
- 6 ▷ TWO-WAY AMBER MARKER AT 24.38 m(80') CENTERS FOR SPEEDS GREATER THAN 45 MPH

WHERE "X" DESIGNATES:
 E = EPOXY — WHITE
 P = PAINT — YELLOW
 T = THERMOPLASTIC
 TP= TEMPORARY PAVEMENT MARKING TAPE
 T3= PAVEMENT MARKING TAPE, TYPE III
 W3= WET TEMPORARY PAVEMENT MARKING TAPE, TYPE III
 All dimensions are in millimeters (inches) unless otherwise shown.

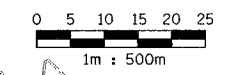
LEGEND

- CONSTRUCTED THIS STAGE
- TEMPORARY PAVEMENT
- DIRECTION OF TRAFFIC
- TEMPORARY CONCRETE BARRIER
- PLASTIC DRUM
- CONSTRUCTED IN PRECEEDING STAGES
- TYPE III BARRICADE WITH FLASHING LIGHTS (ROAD CLOSED)
- SIGN
- LANE(S) CLOSED



- (T3) 100 mm SOLID, PAVEMENT MARKING TAPE, TYPE III (WHITE)
 WAR MEMORIAL DR LT STA. 39+500 TO STA. 39+850
 WAR MEMORIAL DR LT STA. 39+500 TO STA. 39+563
 WAR MEMORIAL DR RT STA. 39+500 TO STA. 39+850
- (7T3) 100 mm SKIP DASH, PAVEMENT MARKING TAPE, TYPE III (WHITE)
 WAR MEMORIAL DR LT STA. 39+500 TO STA. 39+850
 WAR MEMORIAL DR RT STA. 39+500 TO STA. 39+850

NOTE:
 MAINTAIN ROAD CLOSED BARRICADES ON EXISTING RAMP UNTIL RAMP IS REMOVED.



PARSONS TRANSPORTATION GROUP
 Engineers and Planners

REVISIONS	
NAME	DATE

ILLINOIS DEPARTMENT OF TRANSPORTATION
 MAINTENANCE OF TRAFFIC
 WAR MEMORIAL DRIVE
 STAGE 3-2
 STA. 39+500.000 - STA. 39+850.000
 DRAWN BY CADD
 CHECKED BY KJW
 DATE 11/12/04