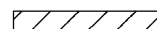
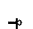


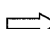

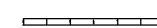
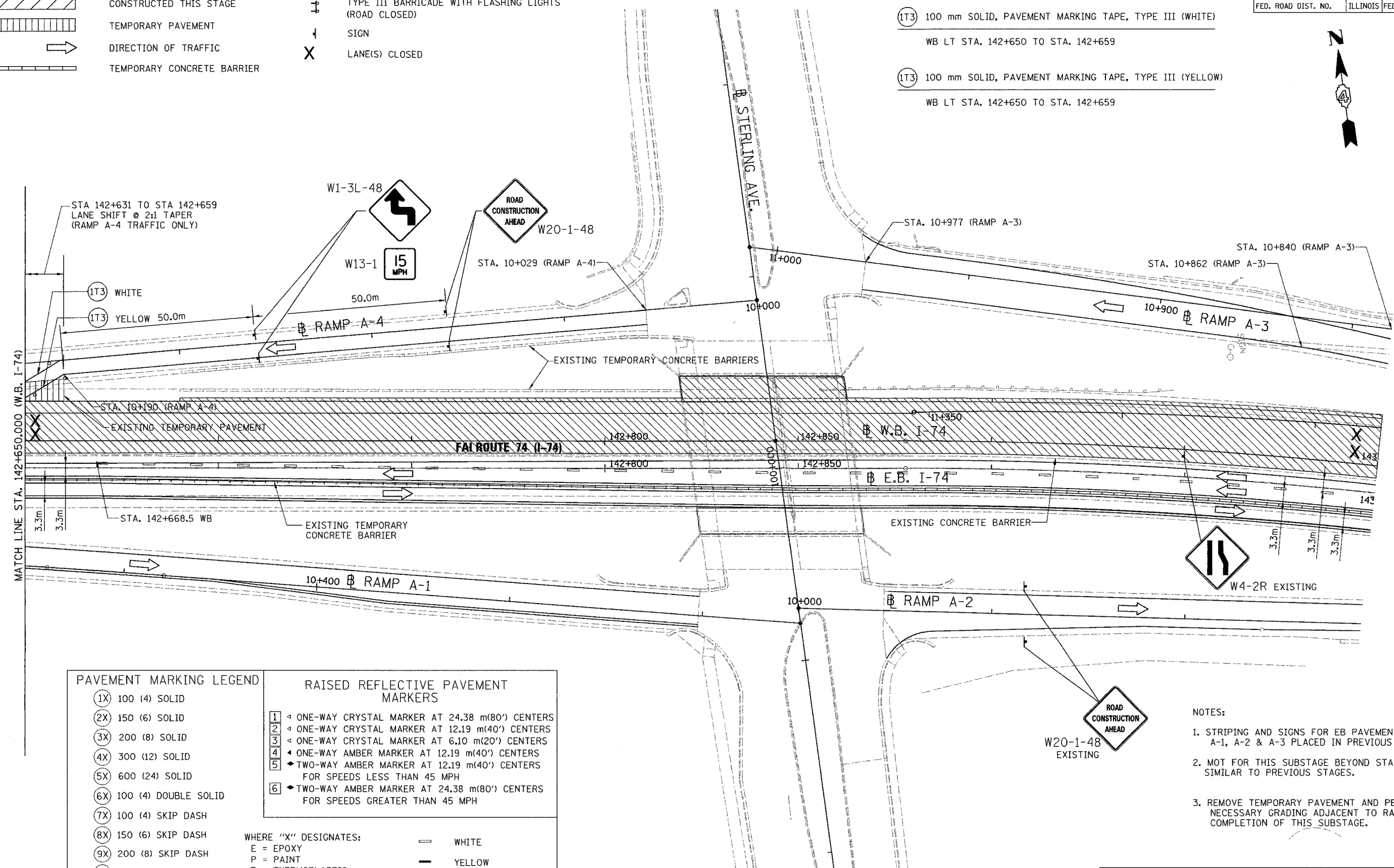


**LEGEND**

- |   |                            |   |   |
|---|----------------------------|---|---|
|  | CONSTRUCTED THIS STAGE     |  | TYPE III BARRICADE WITH FLASHING LIGHTS (ROAD CLOSED) |
|  | TEMPORARY PAVEMENT         |  | SIGN  |
|  | DIRECTION OF TRAFFIC       |  | LANE(S) CLOSED  |
|  | TEMPORARY CONCRETE BARRIER |   |   |

F.A. RTE.	SECTION	COUNTY	TOTAL SHEETS	SHEET NO.
74	(72-7)R-3	PEORIA	1360	158
STA. 142+650.000		TO STA. 143+000.000		
FED. ROAD DIST. NO.	ILLINOIS		FED. AID PROJECT	



PAVEMENT MARKING LEGEND		RAISED REFLECTIVE PAVEMENT MARKERS	
(1X)	100 (4) SOLID	1	ONE-WAY CRYSTAL MARKER AT 24.38 m(80') CENTERS
(2X)	150 (6) SOLID	2	ONE-WAY CRYSTAL MARKER AT 12.19 m(40') CENTERS
(3X)	200 (8) SOLID	3	ONE-WAY CRYSTAL MARKER AT 6.10 m(20') CENTERS
(4X)	300 (12) SOLID	4	ONE-WAY AMBER MARKER AT 12.19 m(40') CENTERS
(5X)	600 (24) SOLID	5	TWO-WAY AMBER MARKER AT 12.19 m(40') CENTERS FOR SPEEDS LESS THAN 45 MPH
(6X)	100 (4) DOUBLE SOLID	6	TWO-WAY AMBER MARKER AT 24.38 m(80') CENTERS FOR SPEEDS GREATER THAN 45 MPH
(7X)	100 (4) SKIP DASH		
(8X)	150 (6) SKIP DASH		
(9X)	200 (8) SKIP DASH		
(10X)	200 (8) DOTTED		
(11X)	LETTERS AND ARROWS		

WHERE "X" DESIGNATES:

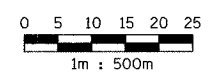
E = EPOXY	—	WHITE
P = PAINT	—	YELLOW
T = THERMOPLASTIC		

TP= TEMPORARY PAVEMENT MARKING TAPE  
 T3= PAVEMENT MARKING TAPE, TYPE III  
 W3= WET TEMPORARY PAVEMENT MARKING TAPE, TYPE III

All dimensions are in millimeters (Inches) unless otherwise shown.

- (1T3) 100 mm SOLID, PAVEMENT MARKING TAPE, TYPE III (WHITE)  
WB LT STA. 142+650 TO STA. 142+659
- (1T3) 100 mm SOLID, PAVEMENT MARKING TAPE, TYPE III (YELLOW)  
WB LT STA. 142+650 TO STA. 142+659

- NOTES:
- STRIPING AND SIGNS FOR EB PAVEMENT AND RAMPS A-1, A-2 & A-3 PLACED IN PREVIOUS STAGE.
  - MOT FOR THIS SUBSTAGE BEYOND STA 143+900 SIMILAR TO PREVIOUS STAGES.
  - REMOVE TEMPORARY PAVEMENT AND PERFORM NECESSARY GRADING ADJACENT TO RAMP A-4 AT COMPLETION OF THIS SUBSTAGE.



**PARSONS TRANSPORTATION GROUP**  
 Engineers and Planners

REVISIONS	
NAME	DATE

ILLINOIS DEPARTMENT OF TRANSPORTATION  
 MAINTENANCE OF TRAFFIC  
 FAI ROUTE 74 (I-74 WB)  
 STAGE 3-2; SUBSTAGE 2  
 STA. 142+650.000 - STA. 143+000.000

DATE 11/12/04  
 DRAWN BY CADD  
 CHECKED BY KJW