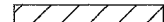



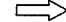


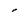
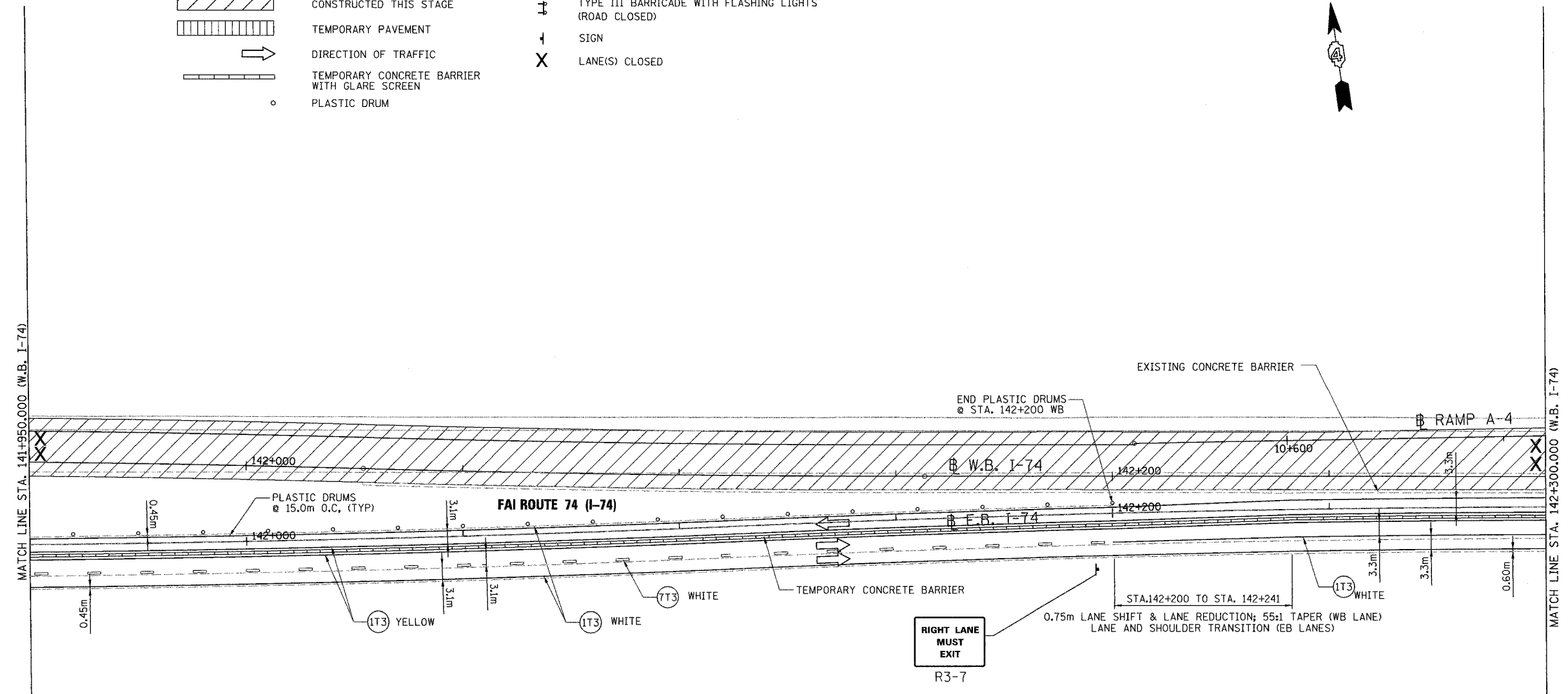


F.A. RTE.	SECTION	COUNTY	TOTAL SHEETS	SHEET NO.
74	(72-7R-3)	PEORIA	1360	128
STA. 141+950.000		TO STA. 142+300.000		
FED. ROAD DIST. NO.		ILLINOIS FED. AID PROJECT		

LEGEND

- | | | | |
|---|--|---|---|
|  | CONSTRUCTED THIS STAGE |  | TYPE III BARRICADE WITH FLASHING LIGHTS (ROAD CLOSED) |
|  | TEMPORARY PAVEMENT |  | SIGN |
|  | DIRECTION OF TRAFFIC |  | LANE(S) CLOSED |
|  | TEMPORARY CONCRETE BARRIER WITH GLARE SCREEN | | |
|  | PLASTIC DRUM | | |



PAVEMENT MARKING LEGEND		RAISED REFLECTIVE PAVEMENT MARKERS	
(1X)	100 (4) SOLID	1	ONE-WAY CRYSTAL MARKER AT 24.38 m(80') CENTERS
(2X)	150 (6) SOLID	2	ONE-WAY CRYSTAL MARKER AT 12.19 m(40') CENTERS
(3X)	200 (8) SOLID	3	ONE-WAY CRYSTAL MARKER AT 6.10 m(20') CENTERS
(4X)	300 (12) SOLID	4	ONE-WAY AMBER MARKER AT 12.19 m(40') CENTERS
(5X)	600 (24) SOLID	5	TWO-WAY AMBER MARKER AT 12.19 m(40') CENTERS FOR SPEEDS LESS THAN 45 MPH
(6X)	100 (4) DOUBLE SOLID	6	TWO-WAY AMBER MARKER AT 24.38 m(80') CENTERS FOR SPEEDS GREATER THAN 45 MPH
(7X)	100 (4) SKIP DASH		
(8X)	150 (6) SKIP DASH		
(9X)	200 (8) SKIP DASH		
(10X)	200 (8) DOTTED		
(11X)	LETTERS AND ARROWS		

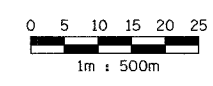
WHERE "X" DESIGNATES:

E = EPOXY	— WHITE
P = PAINT	— YELLOW
T = THERMOPLASTIC	

TP= TEMPORARY PAVEMENT MARKING TAPE
T3= PAVEMENT MARKING TAPE, TYPE III
W3= WET TEMPORARY PAVEMENT MARKING TAPE, TYPE III

All dimensions are in millimeters (inches) unless otherwise shown.

- (7T3) 100 mm SKIP DASH, TEMPORARY PAVEMENT MARKING TAPE (WHITE)
WB RT STA. 141+950 TO STA. 142+200
- (1T3) 100 mm SOLID, TEMPORARY PAVEMENT MARKING TAPE (WHITE)
WB RT STA. 141+950 TO STA. 142+300
WB RT STA. 142+200 TO STA. 142+300
- (1T3) 100 mm SOLID, TEMPORARY PAVEMENT MARKING TAPE (YELLOW)
WB RT STA. 141+950 TO STA. 142+300
WB RT STA. 141+950 TO STA. 142+300



REVISIONS	
NAME	DATE

ILLINOIS DEPARTMENT OF TRANSPORTATION
MAINTENANCE OF TRAFFIC
FAI ROUTE 74 (I-74 WB)
STAGE 3-1
STA. 141+950.000 - STA. 142+300.000

DATE 11/12/04
DRAWN BY CADD
CHECKED BY KJW