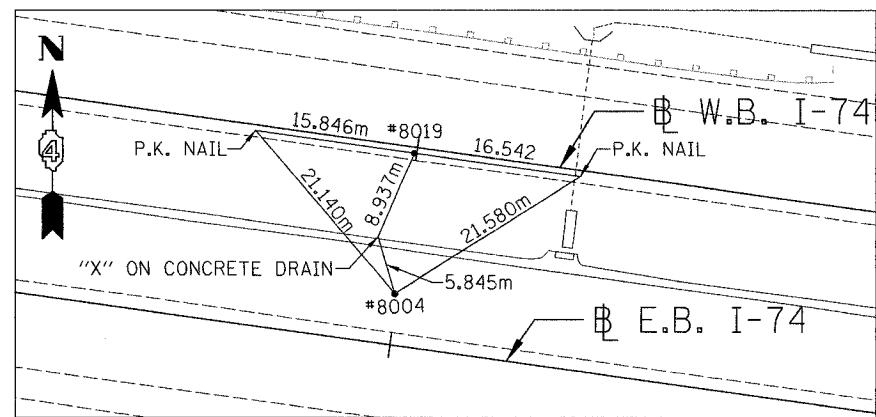
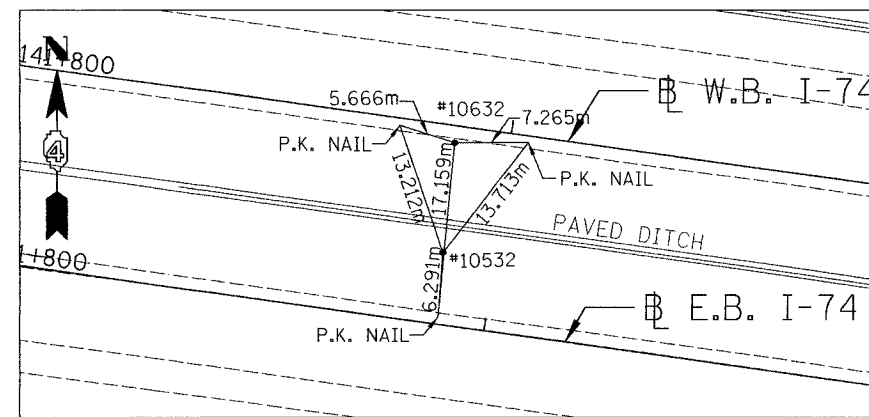


F.A. RTE.	SECTION	COUNTY	TOTAL SHEETS	SHEET NO.
74	(72-7)R-3	PEORIA	1360	106
STA.		TO STA.		
FED. ROAD DIST. NO.		ILLINOIS	FED. AID PROJECT	



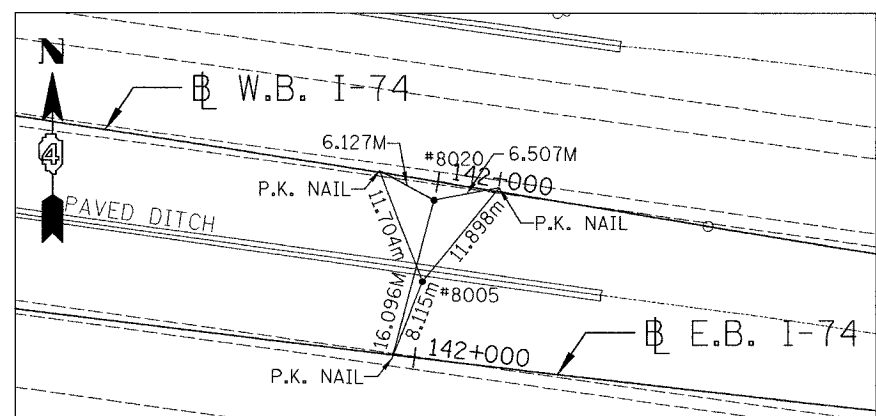
REFERENCE POINTS - 8004 & 8019

#8004 (N 452,190.1283 E 744,050.2432) STA. 141+699.875
 #8019 (N 452,203.9163 E 744,052.1888) STA. 141+699.876



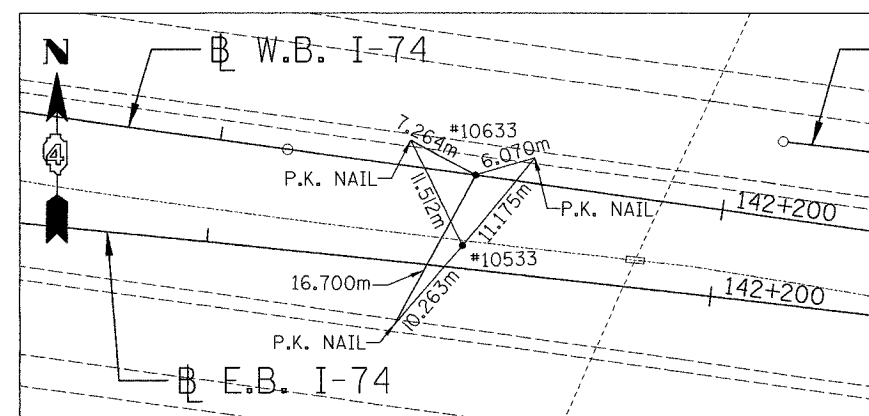
REFERENCE POINTS - 10532 & 10623

#10532 (N 452,172.0193 E 744,194.2853) STA. 141+844.924
 #10623 (N 452,182.8217 E 744,195.4272) STA. 141+844.563



REFERENCE POINTS - 8005 & 8020

#8005 (N 452,152.2385 E 744,347.8225) STA. 141+999.858
 #8020 (N 452,160.2431 E 744,348.9749) STA. 141+999.858



REFERENCE POINTS - 10533 & 10633

#10533 (N 452,128.7139 E 744,521.4332) STA. 142+175.101
 #10633 (N 452,135.5995 E 744,522.7452) STA. 142+175.663

REVISIONS	
NAME	DATE

ILLINOIS DEPARTMENT OF TRANSPORTATION
 ALIGNMENTS, TIES AND BENCHMARKS
 FAI ROUTE 74 (I-74) (WB)
 DRAWN BY CADD
 CHECKED BY MKW
 DATE 11/12/04

