

PROJECT ENGINEER: RICHARD DOTSON (309) 671-3455

LIAISON ENGINEER: CHRISTOPHER MAUSHARD (309) 671-3464

FOR INDEX OF SHEETS AND COMMITMENTS, SEE SHEET NO. 2
FOR LIST OF STANDARDS, SEE SHEET NO. 3
SEE TYPICAL SECTIONS FOR STRUCTURAL PAVEMENT DESIGN INFO

STATE OF ILLINOIS DEPARTMENT OF TRANSPORTATION DIVISION OF HIGHWAYS PLAN FOR PROPOSED HIGHWAY IMPROVEMENT FEDERAL AID INTERSTATE

DESIGN DESIGNATION

FAI ROUTE 74 (ML PAVEMENT) - 7625(25) INTERSTATE 38.28 (PCC-30)
FAI ROUTE 74 (RAMP PAVEMENT) - 1455(25) INTERSTATE 9.23 (PCC-30)
WAR MEMORIAL DRIVE - 3460(25) ARTERIAL 10.76 (COMP-20)
GLEN AVENUE - 3040(25) ARTERIAL 11.52 (COMP-20)

ACIM - ACBRI - 074 - 4(233)089

F.A.I. ROUTE 74 (I-74)
SECTION (72-7)R-3
PROJECT

PEORIA COUNTY
C-94-009-02

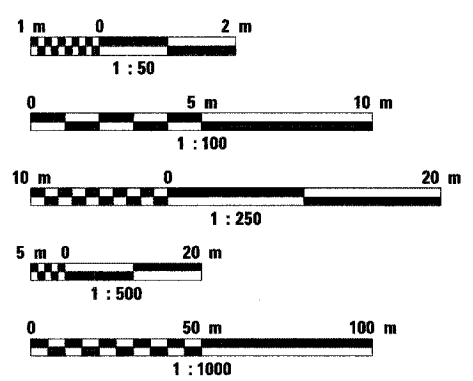
PROJECT ENDS
WAR MEMORIAL DRIVE
STA. 40 + 480.810
R 8 E

PROJECT BEGINS
WAR MEMORIAL DRIVE
STA. 38 + 965.067

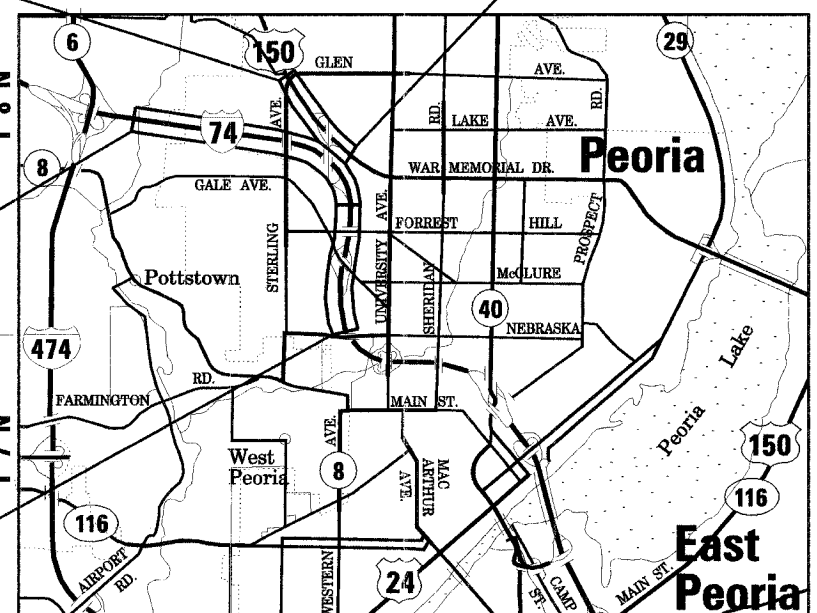
PROJECT BEGINS
WB STA. 140 + 902.744

PROJECT ENDS
WB STA. 146 + 410.000

METRIC RATIOS



FULL SIZE PLANS HAVE BEEN PREPARED USING STANDARD ENGINEERING SCALES. REDUCED SIZED PLANS WILL NOT CONFORM TO STANDARD SCALES. IN MAKING MEASUREMENTS ON REDUCED PLANS, THE ABOVE SCALES MAY BE USED.



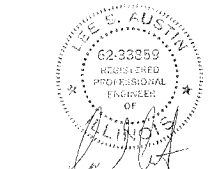
GROSS LENGTH OF IMPROVEMENT = 7.026 KILOMETERS (4.365 MILES)
NET LENGTH OF IMPROVEMENT = 7.024 KILOMETERS (4.364 MILES)
LATITUDE = 40°
LONGITUDE = 89°

CALL J.U.L.I.E. 48 HOURS BEFORE YOU DIG 1-800-892-0123

CATALOG NOS. - 031087-17D
CONTRACT NO. - 68200

BITUMINOUS SUPERPAVE
QC/QA BITUMINOUS
QC/QA CONCRETE

NPDES PERMIT
REQUIRED



LEE S. AUSTIN, P.E.
IL REGISTRATION # 062-033859
CLARK ENGINEERS, INC.
TEL. 309.676.8464
SHEETS 1-17, 879-993, 996-1179

12/20/04
DATE



MARK W. PETERSON
IL REGISTRATION # 062-044935
PARSONS TRANSPORTATION GROUP
TEL. 312.930.5100
SHEETS 19-320, 321-878

12/10/04
DATE



MARIE E. GLYNN
IL REGISTRATION # 062-054037
CH2M HILL
TEL. 773.693.3809
SHEETS 1249-1331

12/14/04
DATE



RICHARD E. STARK
IL REGISTRATION # 062-018111
ALFRED BENESCH & COMPANY
TEL. 312.565.0450
SHEETS 1180-1248

12/19/04
DATE

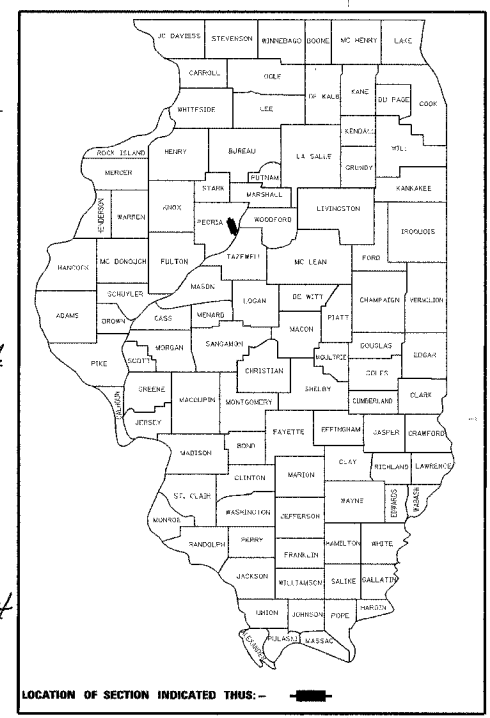


GARY F. RYLANDER
IL REGISTRATION # 062-051035
EDWARDS AND KELCEY
TEL. 312.251.3000
SHEETS 1332-1344

12/13/04
DATE

F.A.I. RTE.	SECTION	COUNTY	TOTAL SHEETS	SHEET NO.
74 (I-74)	(72-7)R-3	PEORIA	1360	1

168200
D-94-009-02



DESIGN FOR PLAN SET #4 HAS BEEN COMPLETED BY THE ILLINOIS DEPARTMENT OF TRANSPORTATION SHEETS 1345-1360



COVERTINE FIDIS
IL REGISTRATION # 35-2159
AMERICAN SURVEYING CONSULTANTS
TEL. 815.288.6231
SHEETS 321-330, 994, 995

12-8-04
DATE

STATE OF ILLINOIS
DEPARTMENT OF TRANSPORTATION
DIVISION OF HIGHWAYS

SUBMITTED 2-10 20 05

John E. Conway
DEPUTY DIRECTOR OF HIGHWAYS, REGION ENGINEER

20

ENGINEER OF DESIGN AND ENVIRONMENT

20

DIRECTOR OF HIGHWAYS, CHIEF ENGINEER

DESIGNED BY:



CLARK ENGINEERS, INC.
PROJECT ENGINEER: LEE S. AUSTIN

111 NE Jefferson Ave.
Peoria, Illinois 61602
Ph(309)676-8464
FAX(309)676-5445
DESIGN FIRM REGISTRATION
NO. 184-00871

PRINTED BY THE AUTHORITY OF THE STATE OF ILLINOIS