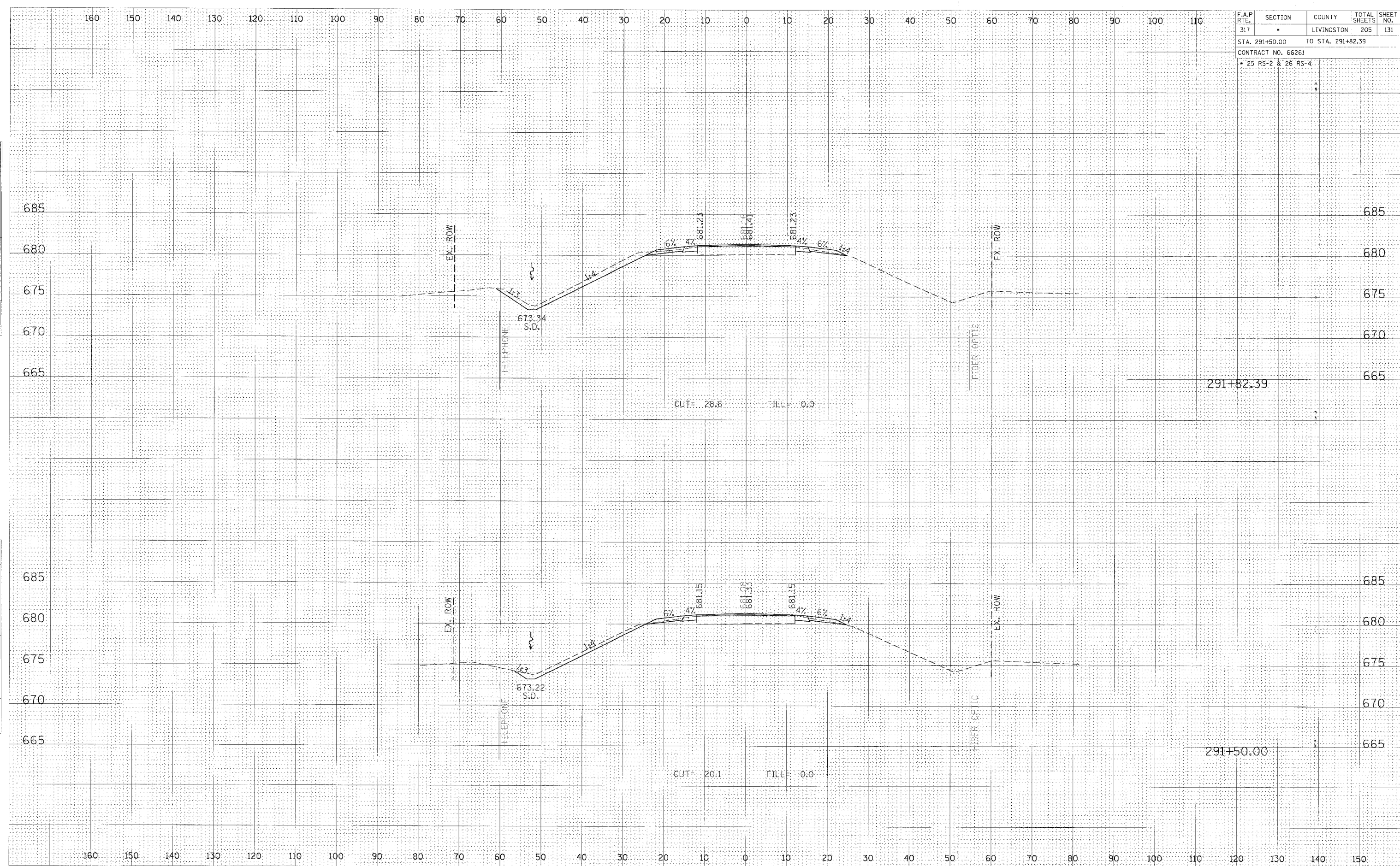


F.A.P. RTE.	SECTION	COUNTY	TOTAL SHEETS	SHEET NO.
317	*	LIVINGSTON	205	131
STA. 291+50.00 TO STA. 291+82.39				
CONTRACT NO. 66261				
* 25 RS-2 & 26 RS-4				

DATE	
BY	
FINAL SURVEY	
PLOTTED	
NOTE BOOK	
AREAS CHECKED	
NO.	

DATE	
BY	
ORIGINAL SURVEY	
REPLIQUED	
NOTE BOOK	
AREAS CHECKED	
NO.	



CROSS SECTION, STA 291+50.00 TO 291+82.39, FAP 317 (US ROUTE 24)