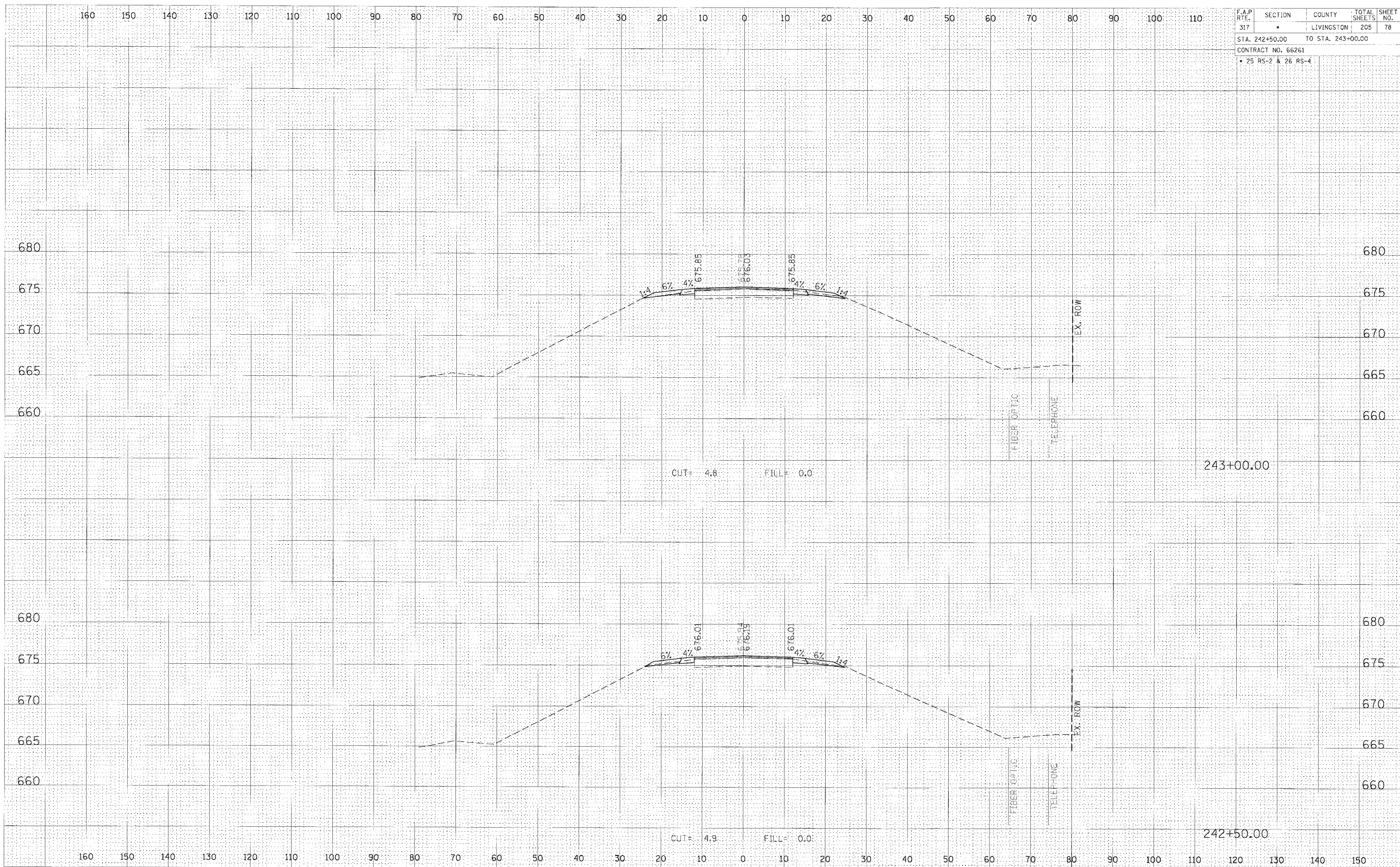


F.A.P. RTE.	SECTION	COUNTY	TOTAL SHEETS	SHEET NO.
317	*	LIVINGSTON	205	78
STA. 242+50.00 TO STA. 243+00.00				
CONTRACT NO. 66261				
* 25 RS-2 & 26 RS-4				

FINAL SURVEY	DATE
SURVEYED	BY
PLOTTED	BY
NOTE BOOK	NO.
AREAS CHECKED	

ORIGINAL SURVEY	DATE
SURVEYED	BY
PLOTTED	BY
NOTE BOOK	NO.
AREAS CHECKED	



CROSS SECTION, STA 242+50.00 TO 243+00.00, FAP 317 (US ROUTE 24)