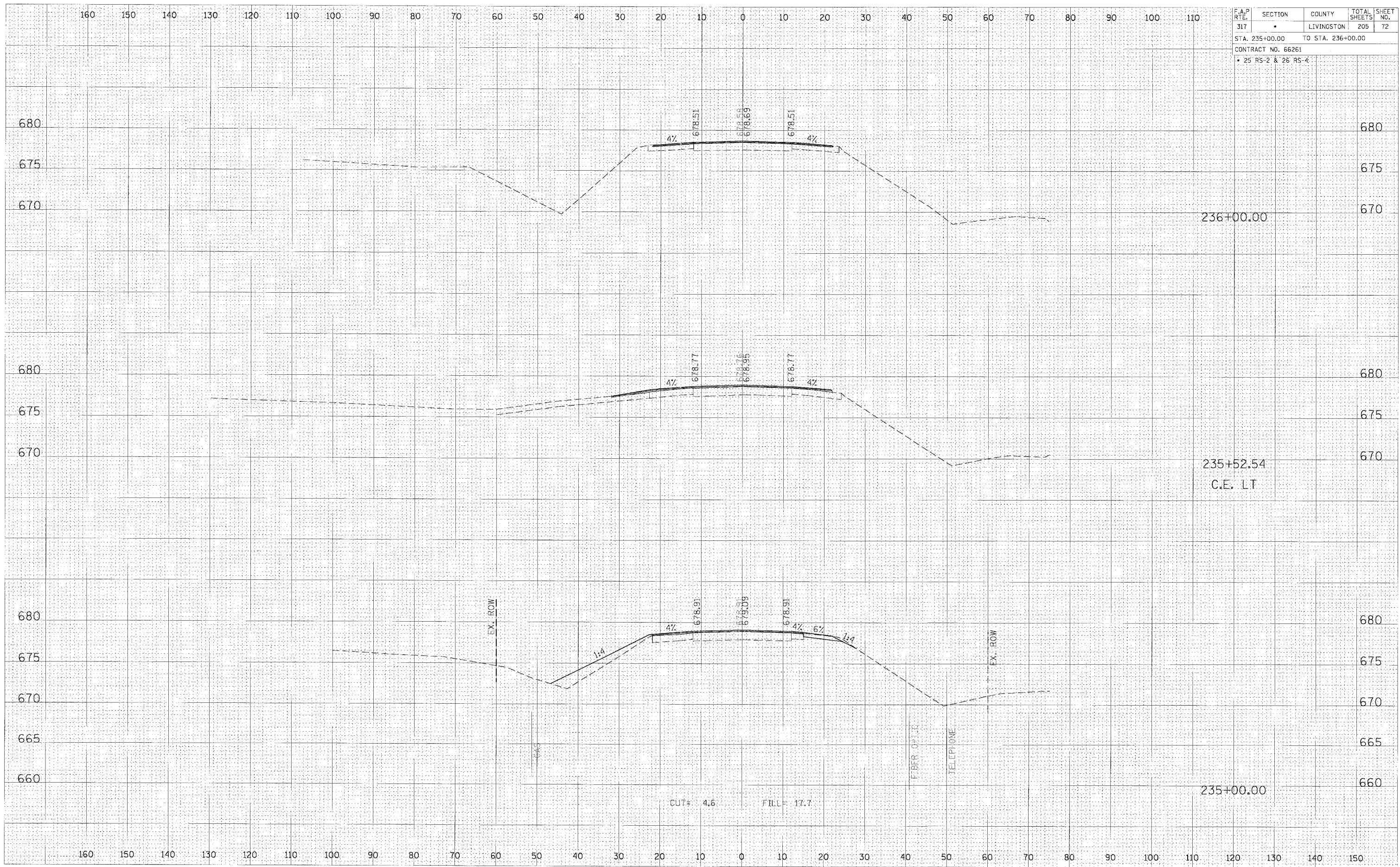


F.A.P. RTE.	SECTION	COUNTY	TOTAL SHEETS	SHEET NO.
317	*	LIVINGSTON	205	72
STA. 235+00.00 TO STA. 236+00.00				
CONTRACT NO. 66261				
* 25 RS-2 & 26 RS-4				

FINAL SURVEY	DATE
BY	
REVISION	
NO. 1	
NO. 2	
NO. 3	
NO. 4	
NO. 5	
NO. 6	
NO. 7	
NO. 8	
NO. 9	
NO. 10	

ORIGINAL SURVEY	DATE
BY	
REVISION	
NO. 1	
NO. 2	
NO. 3	
NO. 4	
NO. 5	
NO. 6	
NO. 7	
NO. 8	
NO. 9	
NO. 10	



CROSS SECTION, STA 235+00.00 TO 236+00.00, FAP 317 (US ROUTE 24)