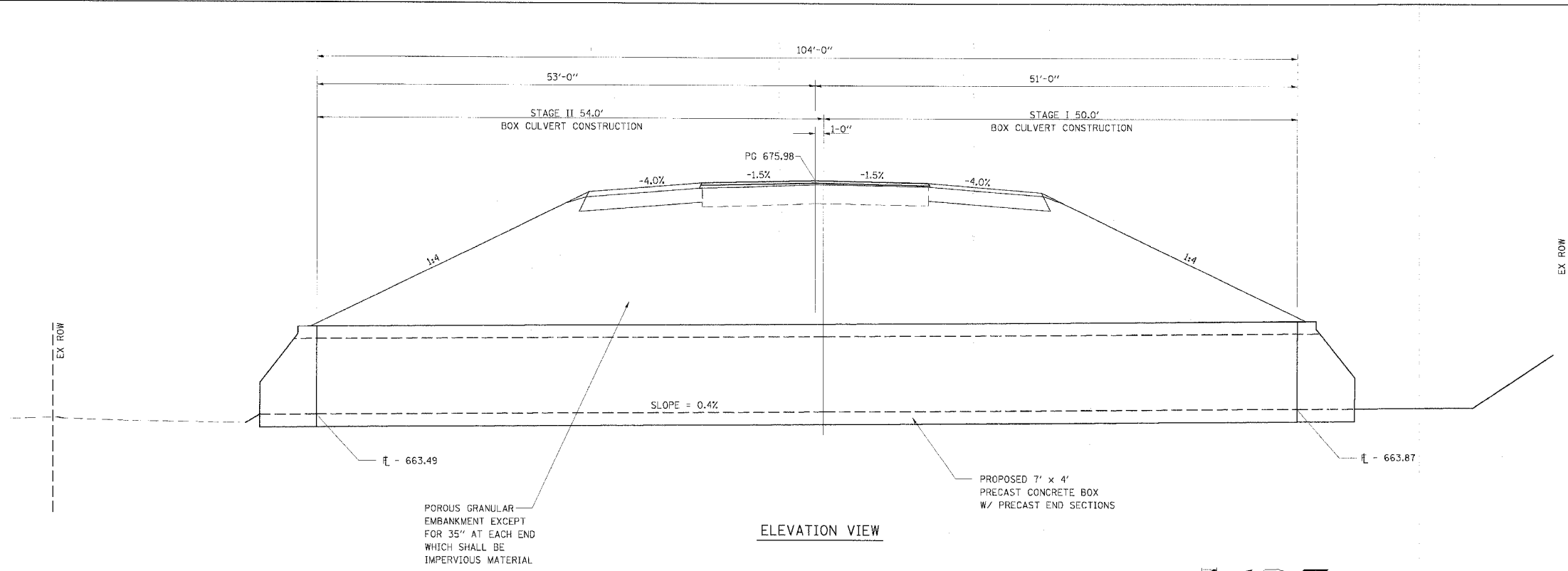
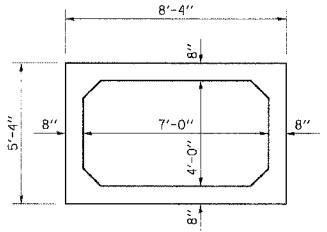


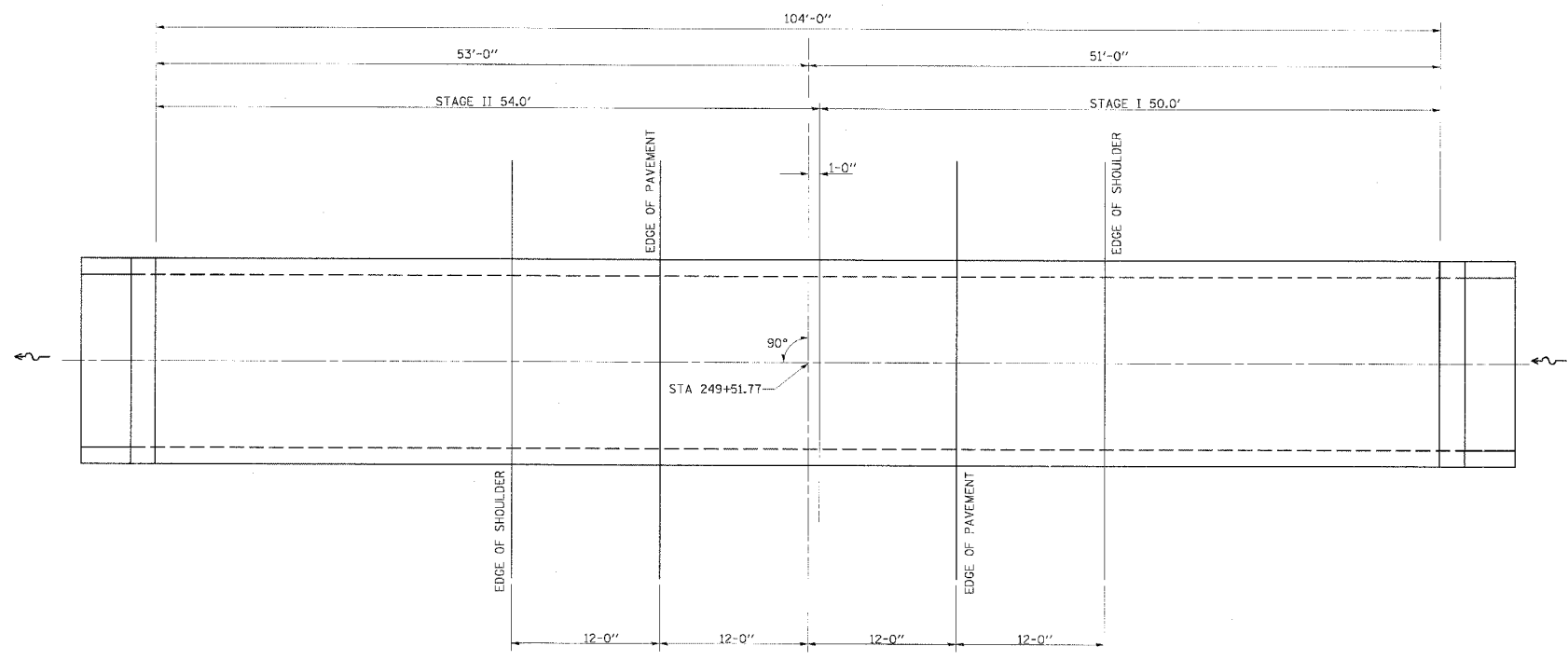
F.A.P. RTE.	SECTION	COUNTY	TOTAL SHEETS	SHEET NO.
317		LIVINGSTON	205	57
STA.		TO STA.		
CONTRACT NO. 66261				
• 25 RS-2 & 26 RS-4				



ELEVATION VIEW



SECTION THRU BARREL



PLAN VIEW

REVISIONS	
NAME	DATE

ILLINOIS DEPARTMENT OF TRANSPORTATION
**7' X 4' PRECAST CONCRETE BOX
 CULVERT DETAILS STA 249+51.77**
 FAP 317 (US ROUTE 24)
 SECTION 25 RS-2 & 26 RS-4
 LIVINGSTON COUNTY
 SCALE: _____ DRAWN BY BARGIEL
 DATE _____ CHECKED BY STEUART