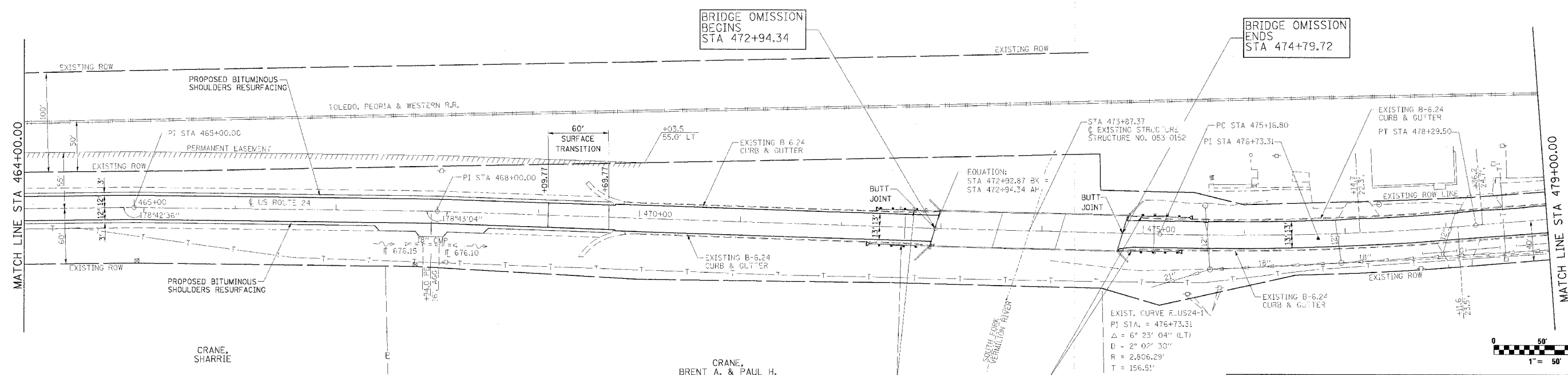
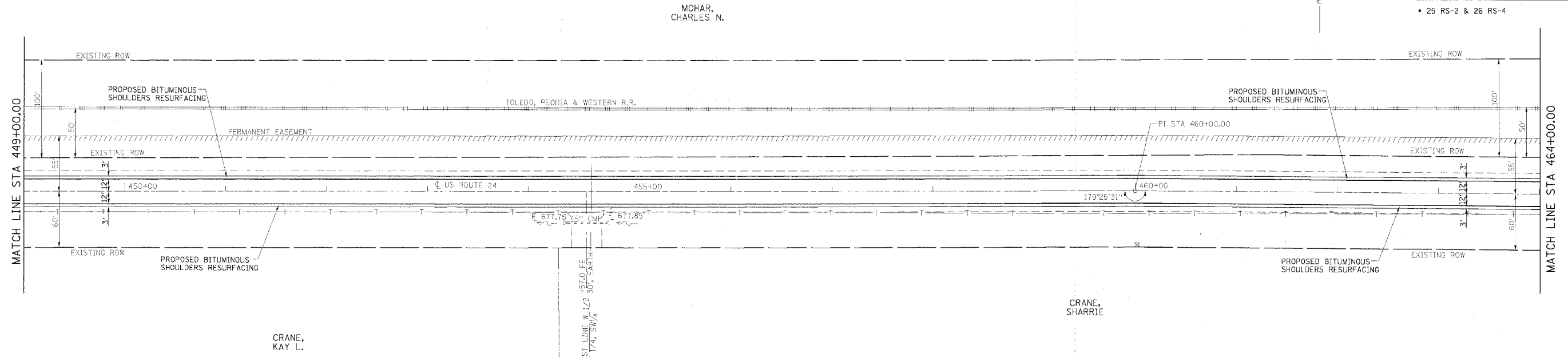


F.A.P. RTE.	SECTION	COUNTY	TOTAL SHEETS	SHEET NO.
317		LIVINGSTON	205	38
STA. 236+00.00 TO STA. 266+00.00			CONTRACT NO. 66261	
• 25 RS-2 & 26 RS-4				



BM-5 CHISELED "C" IN TOP OF SOUTHWEST WING OF EXISTING BRIDGE, ELEVATION 685.75

REVISIONS	
NAME	DATE

ILLINOIS DEPARTMENT OF TRANSPORTATION
PLAN SHEET
 FAP 317 (US ROUTE 24)
 SECTION 25 RS-2 & 26 RS-4
 LIVINGSTON COUNTY
 SCALE: _____
 DATE _____
 DRAWN BY BANDY
 CHECKED BY STEUART