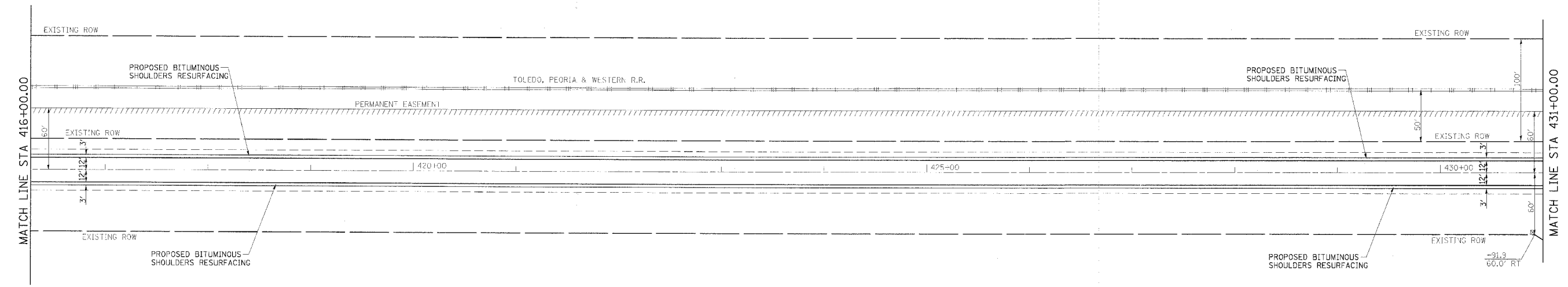


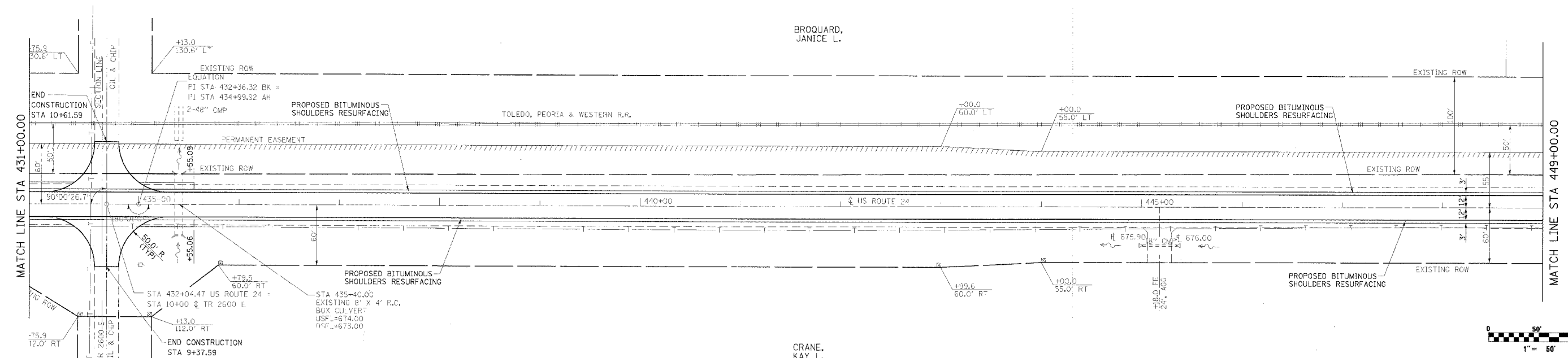
F.A.P. RTE.	SECTION	COUNTY	TOTAL SHEETS	SHEET NO.
317		LIVINGSTON	205	37
STA. 236+00.00		TO STA. 266+00.00		
CONTRACT NO. 66261				

• 25 RS-2 & 26 RS-4

IBP INC.  
PROPERTY TAX



BROQUARD, JANICE M.



BROQUARD,  
JANICE L.

CRANE,  
KAY L.

BM-6 CHISEL "E" ON SOUTHWALL  
OF BOX CULVERT RTE 24 &  
LIVINGSTON CO ROAD 2600E.  
STA 432+25.00, 23' RT  
ELEVATION 679.00

REVISIONS	
NAME	DATE

ILLINOIS DEPARTMENT OF TRANSPORTATION  
**PLAN SHEET**  
FAP 317 (US ROUTE 24)  
SECTION 25 RS-2 & 26 RS-4  
LIVINGSTON COUNTY  
SCALE: \_\_\_\_\_  
DATE \_\_\_\_\_  
DRAWN BY BANDY  
CHECKED BY STEUART