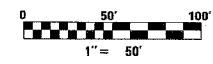
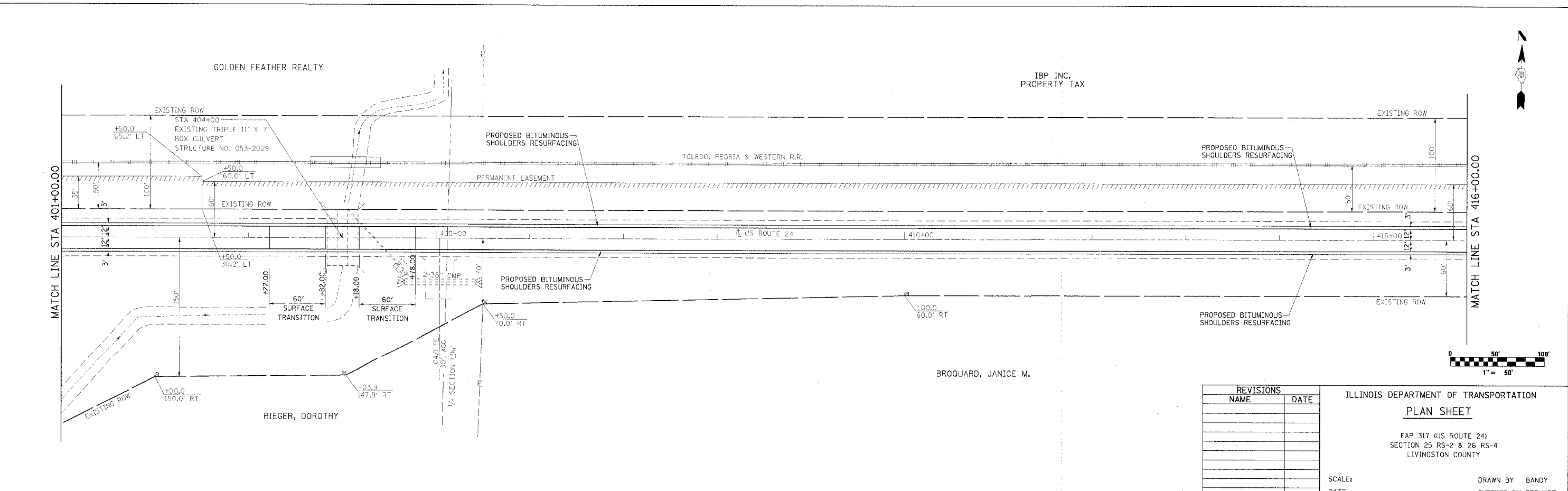
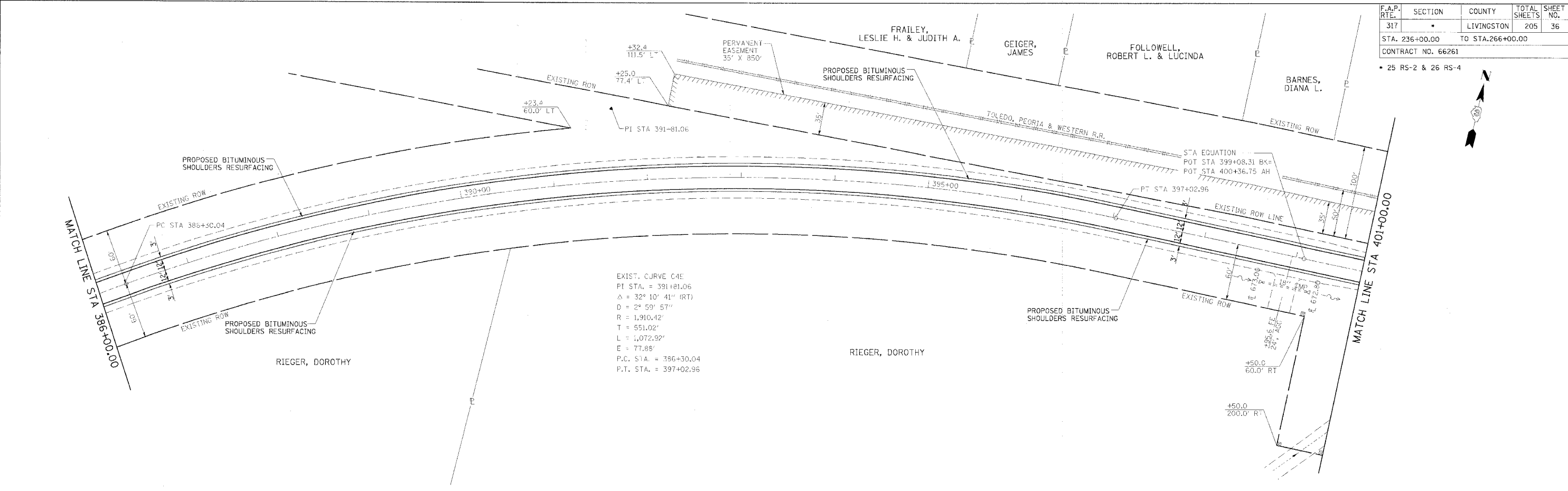


F.A.P. RTE.	SECTION	COUNTY	TOTAL SHEETS	SHEET NO.
317		LIVINGSTON	205	36
STA. 236+00.00 TO STA. 266+00.00				
CONTRACT NO. 66261				

• 25 RS-2 & 26 RS-4



REVISIONS	
NAME	DATE

ILLINOIS DEPARTMENT OF TRANSPORTATION  
**PLAN SHEET**  
 FAP 317 (US ROUTE 24)  
 SECTION 25 RS-2 & 26 RS-4  
 LIVINGSTON COUNTY

SCALE: \_\_\_\_\_  
 DATE \_\_\_\_\_

DRAWN BY BANDY  
 CHECKED BY STEUART