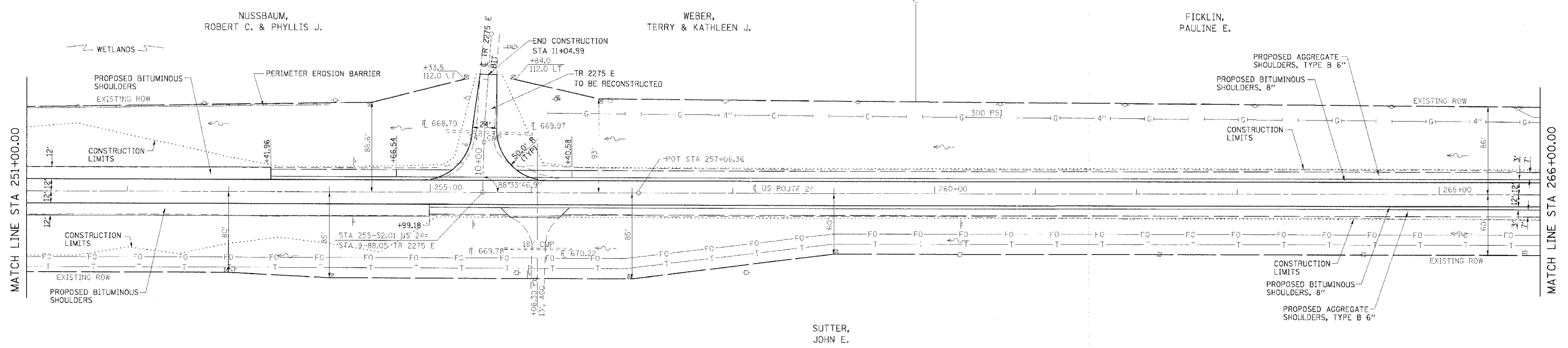
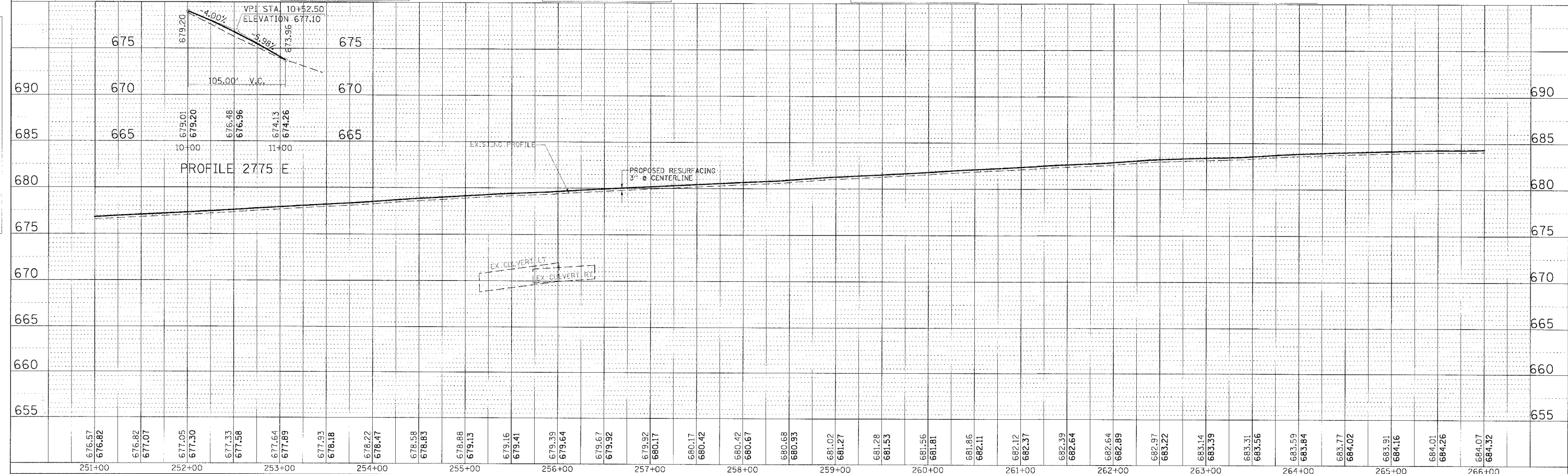
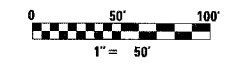


F.A.P. RTE.	SECTION	COUNTY	TOTAL SHEETS	SHEET NO.
317		LIVINGSTON	205	28
STA. 251+00.00 TO STA. 266+00.00				
CONTRACT NO. 66261				
• 25 RS-2 & 26 RS-4				



- BM-25350 10' R.O.W. MARKER STA 253+05.00 ELEV 670.00
- BM-256 SPIKE IN POWER POLE STA 255+85.00, 78' RT ELEV 678.27
- BM-260 SPIKE IN POWER POLE STA 260+27.00, 78' RT ELEV 680.09
- BM-264 SPIKE IN POWER POLE STA 264+23.00, 78' RT ELEV 685.14



PLAN	DATE	BY
REVISION		
NO. 1		
NO. 2		
NO. 3		
NO. 4		
NO. 5		
NO. 6		
NO. 7		
NO. 8		
NO. 9		
NO. 10		

PROFILE	DATE	BY
REVISION		
NO. 1		
NO. 2		
NO. 3		
NO. 4		
NO. 5		
NO. 6		
NO. 7		
NO. 8		
NO. 9		
NO. 10		

PLAN AND PROFILE, STA 251+00.00 TO STA 266+00.00, FAP 317 (US ROUTE 24)